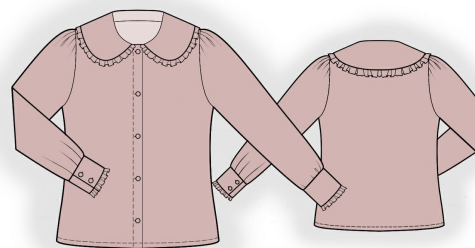


Blouse With Big Collar (116-140Cm) - Sewing Pattern #7196

This blouse pattern is recommended for total height of 116-140, bust circumference 56-72.

Recommendations on fabric: natural/mixed fabric suitable for blouses (cotton, viscose, polyester).

You will also need: fusible interfacing, 9 buttons.



Note on seam allowances:

- If the pattern has double contour the seam allowances are included. They are 1 cm unless specified otherwise.

- If the pattern has single contour, the seam allowances are NOT included and need to be added when laying out the pattern.

Note on length of fabric:

Attention! The amount of fabric needed for your pattern is not included. It will depend on the selected pattern size, the width, and design of the fabric you plan to use. First, print all the paper patterns and lay them out at the width of fabric you plan to use (usually from 90 to 150 cm). Measure how much fabric you will need. Don't forget to account for pieces that need to be cut multiple times and pieces that are cut on the fold.

CUTTING:

Note on cutting:

On the pattern pieces, "beam" means straight of grain. Lay out your pieces accordingly. Some pieces will be cut on the fold. This is noted on the pattern piece. Mark all notches and other design features such as pleats etc. from the pattern onto your fabric.

When sewing the garment, pay attention to notches, they must match up.

Main fabric:

1. Back - cut 1
2. Front - cut 2
3. Sleeve - cut 2
4. Collar - cut 2
5. Placket of collar - cut 1
6. Cuff - cut 4
7. Sleeve placket - cut 2

Fusible interfacing:

1. Collar - cut 1
2. Center front placket - cut 2
3. Cuff - cut 2

INSTRUCTIONS:

1. Apply fusible interfacing to the 1-piece placket, cuffs and upper collar.
2. Finish the lower and side edges of collar plackets and cuffs with thin rolled hem. Sew a gathering stitch along the upper edge of plackets and gather fullness.
3. Pin upper collar to lower collar, right sides together. Insert collar placket in between. Sew collar. Start and stop sewing exactly at the marked line of the seam between collar and garment into neckline. Trim seam allowances. Turn the collar right side out, straighten and press.
4. Fold under and press the closure placket first at 1 cm, and then again at 3 cm. fold placket onto right side and sew upper edge center front facings from the edge up to notch. Slash seam at neckline at the mark for sewing in collar. Sew a decorative stitch along the inner edge of placket.
5. Sew shoulder and side seams. Serge and press towards back.
6. Sew the upper collar into the neckline, fold inside raw edge of lower collar and stitch in the ditch. Sew a decorative stitch along the collar.
7. Slash seam allowance near the mark at the lower edge of sleeve. Fold under the area between the markings two times at 0.5 cm inside and topstitch.
8. Sew and serge edges of sleeves. Sew in the sleeves. Press. Sew a gathering stitch along the lower edge of sleeve and the upper edge of sleeve cap and gather fullness.
9. Cuffs pin together right sides together, insert the sleeve placket in between and sew three sides. Start and stop stitching exactly at the marked line of seam cuffs. Cuffs turn right side out and press. Sew outer side of cuff to sleeve. Fold inside inner side of cuff and topstitch into seam of.
10. Fold under the hem of garment two times at 1 cm and topstitch.
11. Make buttonholes on cuffs and sew on buttons. Make buttonholes on right front, on left front - sew on buttons.

TECHNICAL DRAWING:

