

## Dress - Sewing Pattern #5948

Recommendations on fabric: natural/mixed fabric suitable for dresses.

You will also need: dress zipper, fusible interfacing.

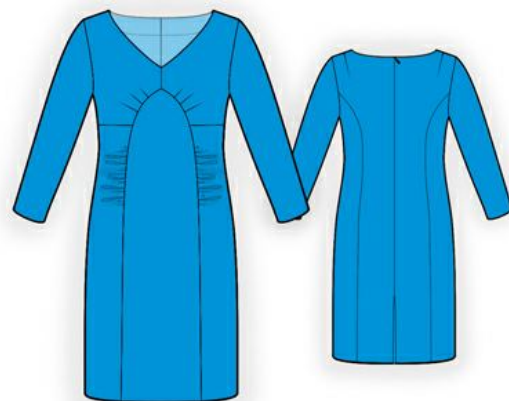
Seam allowances: seam allowance for hem of dress and seam allowance for hem of sleeve - 2.0 cm, seam allowance for slit on back - 2 cm, other seams - 1 cm;

### Note on seam allowances:

- If the pattern has double contour the seam allowances are included. They are 1 cm unless specified otherwise.
- If the pattern has single contour, the seam allowances are NOT included and need to be added when laying out the pattern.

### Note on length of fabric:

*Attention! The amount of fabric needed for your pattern is not included. It will depend on the selected pattern size, the width, and design of the fabric you plan to use. First, print all the paper patterns and lay them out at the width of fabric you plan to use (usually from 90 to 150 cm). Measure how much fabric you will need. Don't forget to account for pieces that need to be cut multiple times and pieces that are cut on the fold.*



## CUTTING:

### Note on cutting:

*On the pattern pieces, "beam" means straight of grain. Lay out your pieces accordingly. Some pieces will be cut on the fold. This is noted on the pattern piece. Mark all notches and other design features such as pleats etc. from the pattern onto your fabric.*

*When sewing the garment, pay attention to notches, they must match up.*

Main fabric:

1. Center back - cut 2
2. Side back - cut 2
3. Side front - cut 2
4. Center lower front - cut 1
5. Upper front - cut 2
6. Sleeve - cut 2
7. Back neck facing - cut 2
8. Front neck facing - cut 1

Fusible interfacing: Back neck facing and front neck facing, seam allowances for slit on back.

## INSTRUCTIONS:

1. Apply fusible interfacing.
2. Sew darts on back. Press darts towards center.
3. Serge center back edges separately. Sew center back seam from zipper marker down to slit corner. Шов press apart, pressing the slit for zipper at the same time. Sew in zipper.
4. Sew side backs to center back, serge seam and press towards center.
5. Sew darts on upper fronts. Press darts towards center. Sew center seam on upper front down to future seam between upper front and lower front. Serge seam and press towards right.
6. Sew a gathering stitch on side front and gather fullness. Sew side front to upper front. Serge seam and press towards top.
7. Sew side fronts to front, placing gathers at waist level. Serge seam and press towards center.
8. Sew shoulder and side seams on backs and fronts. Serge seams and press towards back.
9. Sew seams of facings. Шов press apart. Serge outer edge of facings. Pin facing on garment, right sides together. Fold facings outside by 5 mm from zipper and pin to upper edge of dress. Fold seam allowances of zipper onto the right side of dress and pin to upper edge of dress on top of facings. Sew neckline edge. Clip into curves. Turn facing under and straighten and press. Fold seam allowances along closure onto wrong side and sew by hand to the zipper tape.
10. Sew sleeve seam. Serge and press seam. Sew sleeves into armholes matching notches and adjusting ease. Serge and press seam.
11. Serge seam allowance of dress bottom edge and sleeve edges, press onto wrong side and topstitch or hem as desired. Hem seam allowances on slit to the inside of garment.

## TECHNICAL DRAWING:

