

Asymmetrical Dress - Sewing Pattern #4995

Recommendations on fabric: natural/mixed knit fabric of small stretchiness.

You will also need: knit fabric of middle to high stretchiness in similar or contrasting colours; knit fusible interfacing, dress zipper.

Seam allowances: all seams 1 cm. Seam allowance along lower edge of dress and hem of sleeve - 2.0 cm.

Note on seam allowances:

- If the pattern has double contour the seam allowances are included. They are 1 cm unless specified otherwise.
- If the pattern has single contour, the seam allowances are NOT included and need to be added when laying out the pattern.

Note on length of fabric:

Attention! The amount of fabric needed for your pattern is not included. It will depend on the selected pattern size, the width, and design of the fabric you plan to use. First, print all the paper patterns and lay them out at the width of fabric you plan to use (usually from 90 to 150 cm). Measure how much fabric you will need. Don't forget to account for pieces that need to be cut multiple times and pieces that are cut on the fold.

Note on working with stretchy fabric:

Knitted fabric pieces are sewn together with special elastic or narrow zig-zag stitch. Seam allowance on hems can be stitched with twin needles to save stretchiness. Pieces can also be sewn together with a serger. When serging, cut seam allowances to 0.6 - 0.8 cm.

CUTTING:

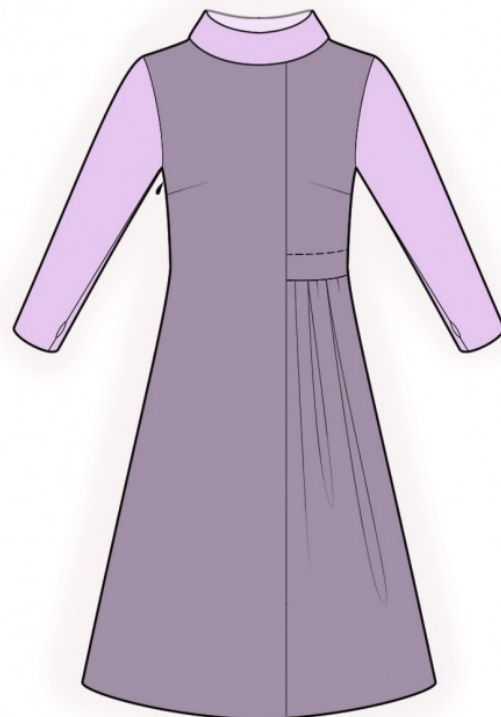
Note on cutting:

On the pattern pieces, "beam" means straight of grain. Lay out your pieces accordingly. Some pieces will be cut on the fold. This is noted on the pattern piece. Mark all notches and other design features such as pleats etc. from the pattern onto your fabric.

When sewing the garment, pay attention to notches, they must match up.

Main fabric:

1. Back - cut 1
2. Upper back - cut 1



3. Lower back - cut 1
4. Upper front - cut 1
5. Lower front - cut 1
6. Front - cut 1

Knit fabric:

1. Sleeve - cut 2
2. Collar - cut 1

Fusible interfacing:

1. Collar - cut 1

INSTRUCTIONS:

1. Apply fusible interfacing to collar.
2. Sew a gathering stitch along the upper edge of lower back and gather fullness. You may also make pleats as desired. Sew upper part to lower part. Serge.
3. Sew a gathering stitch along the upper edge of lower front and gather fullness. You may also make pleats as desired. Sew upper part to lower part. Serge. Sew the left side edge. Serge seams and press towards back. Make pleat along the marked line on upper front and on upper back and fix with a stitch from the right side.
4. Sew front darts. Press bulk towards top.
5. Sew side front to front. Serge and press onto front.
6. Sew side backs to center back. Serge and press towards back.
7. Serge right side edges separately. Sew right side edges, from armhole to notch zippers and from notch for zipper to bottom. Sew in zipper.
8. Sew collar into a ring, press the seam apart. Fold collar in half lengthwise right side out and press. Sew collar to neckline. Collar seam should be shifted by 2 cm from shoulder seam towards back. Serge the seam allowances.
9. Serge the sleeve's edges separately. Sew sleeve seam in two steps: from armhole to first mark, and from the second mark to the sleeve hem. Press the seam apart. Sew sleeve into armhole, matching notches. Serge and press.
10. Serge lower edge of dress and lower edge of sleeves, press onto wrong side and topstitch.

TECHNICAL DRAWING:

