

Dress With Button Closure - Sewing Pattern #4988

Recommendations on fabric: natural/mixed fabric suitable for dresses.

You will also need: fusible interfacing, 8 buttons, buckle.

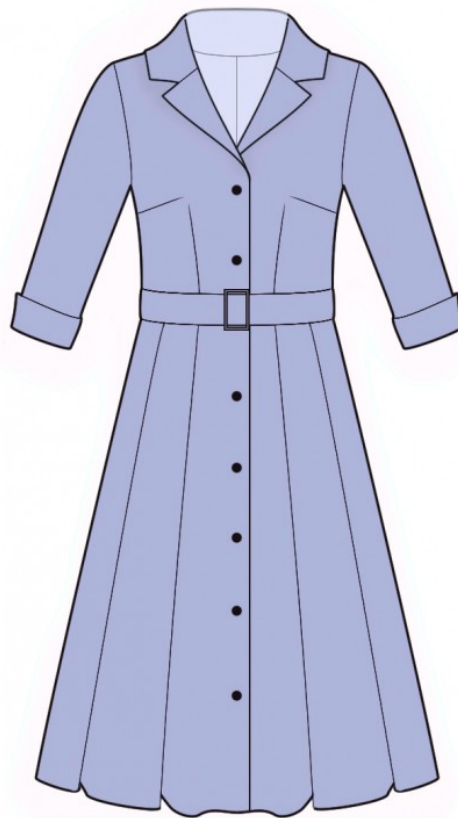
Seam allowances: seam allowance for hem of garment — 2.0 cm, other seams 1 cm.

Note on seam allowances:

- If the pattern has double contour the seam allowances are included. They are 1 cm unless specified otherwise.
- If the pattern has single contour, the seam allowances are NOT included and need to be added when laying out the pattern.

Note on length of fabric:

Attention! The amount of fabric needed for your pattern is not included. It will depend on the selected pattern size, the width, and design of the fabric you plan to use. First, print all the paper patterns and lay them out at the width of fabric you plan to use (usually from 90 to 150 cm). Measure how much fabric you will need. Don't forget to account for pieces that need to be cut multiple times and pieces that are cut on the fold.



CUTTING:

Note on cutting:

On the pattern pieces, "beam" means straight of grain. Lay out your pieces accordingly. Some pieces will be cut on the fold. This is noted on the pattern piece. Mark all notches and other design features such as pleats etc. from the pattern onto your fabric.

When sewing the garment, pay attention to notches, they must match up.

Main fabric:

1. Upper back - cut 2
2. Lower back — cut 2
3. Upper front — cut 2
4. Lower front — cut 2
5. Sleeve — cut 2
6. Cuff — cut 2
7. Collar — cut 2

8. Center front facing — cut 2
9. Back neck facing - cut 1
10. Belt - cut 1

Fusible interfacing:

1. Collar — cut 1
2. Center front facing — cut 2
3. Back neck facing - cut 1
4. Cuff — cut 2
5. Belt - cut 1

INSTRUCTIONS:

1. Apply fusible interfacing.
2. Sew darts on upper backs, press bulk towards center. Sew center seam on upper back and on lower back, press towards left and serge.
3. Make and baste pleats on lower back (fold bulks from center). Sew upper back to lower back, press towards top and serge.
4. Sew darts on upper fronts. Press bulk of waist darts towards center, press bulk of bust darts towards top. Make and baste pleats on lower front (fold bulks from center). Sew upper front to lower front, press towards top and serge.
5. Sew side and shoulder seams, press towards the back and serge.
6. Pin collars together, right sides together, and sew collar ends and collar fall. Start and stop sewing exactly at the marked line of the seam between collar and garment. Trim away corners, snip into seam allowance near the mark. Turn the collar right side out, straighten and press.
7. Sew and press apart the shoulder edges of the back neckline facing and of the center front facing. Serge the outer edge.
8. Place center front facing onto front right sides together, pin together and sew along the center front edge. Sew upwards up to the notch marking the end of collar seam. Trim away corners. Topstitch seam allowance along center front edge onto center front facing along the closure, and onto front along the part, which is folded away. Place stitch line at 0,2 cm from seam. Turn center front facings right side out, straighten seams.
9. Sew lower collar into neckline of the dress, sew upper collar into the neckline of back facing and center front facing. Snip into seam allowances of collar, press apart and slipstitch together close to the seam.
10. Sew sleeve seam, press towards the back and serge. Sew sleeves into armholes, matching notches. Serge

and press.

11. Fold cuff in half lengthwise, right sides together and sew ends from fold to notch. Trim away corners, snip into seam allowance near the mark. Fold cuff into ring and sew the areas from marking up to the lower edge. Turn cuff right side out, straighten, press. Pin cuff onto wrong side of sleeve, matching the seam on cuff with the marking on sleeve, and sew. Serge and press. Fold cuff to right side.

12. Serge the lower edge of garment, press onto wrong side and topstitch.

13. Make buttonholes on right front, sew on buttons onto left front.

14. Fold belt in half lengthwise right sides together and sew along longer and one shorter sides. Turn belt right side out, straighten, press. Serge the shorter side. Sew a decorative stitch around the contour at 0.1 cm. Thread in and fix buckle on the serged side of the belt. Make holes.

TECHNICAL DRAWING:

