

Jacket Without Closure - Sewing Pattern #4983

Recommendations on fabric: natural/mixed suiting fabrics.

You will also need: fusible interfacing; lining; thin shoulder pads.

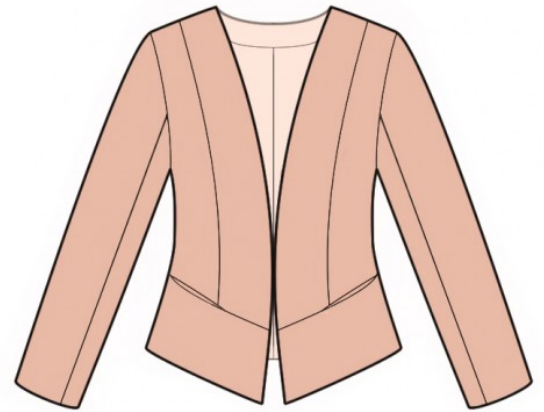
Seam allowances: all seams 1 cm. Seam allowances along hem of garment and hem of sleeve 3 cm.

Note on seam allowances:

- If the pattern has double contour the seam allowances are included. They are 1 cm unless specified otherwise.
- If the pattern has single contour, the seam allowances are NOT included and need to be added when laying out the pattern.

Note on length of fabric:

Attention! The amount of fabric needed for your pattern is not included. It will depend on the selected pattern size, the width, and design of the fabric you plan to use. First, print all the paper patterns and lay them out at the width of fabric you plan to use (usually from 90 to 150 cm). Measure how much fabric you will need. Don't forget to account for pieces that need to be cut multiple times and pieces that are cut on the fold.



CUTTING:

Note on cutting:

On the pattern pieces, "beam" means straight of grain. Lay out your pieces accordingly. Some pieces will be cut on the fold. This is noted on the pattern piece. Mark all notches and other design features such as pleats etc. from the pattern onto your fabric.

When sewing the garment, pay attention to notches, they must match up.

Main fabric:

1. Center back - cut 2
2. Side back - cut 2
3. Side front - cut 2
4. Center front - cut 2
5. Center front facing — cut 2
6. Back neck facing - cut 1
7. Upper sleeve - cut 2

8. Lower sleeve - cut 2
9. Lower front — cut 2
10. Pocket bag - cut 4

Lining is cut using the pattern blocks for self fabric, except for the width of back neckline facing.

Lining:

1. Center back - cut 2
2. Side back - cut 2
3. Side front - cut 2
4. Front lining - cut 2
5. Upper sleeve - cut 2
6. Lower sleeve - cut 2
7. Lower front — cut 2

Fusible interfacing: center front, center front facing, back neck facing.

INSTRUCTIONS:

1. Apply fusible interfacing. Cut a tape from fusible interfacing and apply along edge of back neckline.
2. Sew princess seam on front. Press the seam apart. Sew pocket lining to front. Start and stop stitching exactly at the marked seamline. Press towards top. Sew pocket lining to lower front. Start and stop stitching exactly at the marked seamline. Sew lower part to front from center front to pocket, and from pocket to side seam. Press the seam apart. Sew pocket bag. Press seam.
3. Sew and press apart princess seams on back. Sew the center back seam. Press the seam allowances apart.
4. Sew shoulder seams of jacket. Press the seam apart. Sew side seams of jacket. Press the seam apart.
5. Sew elbow seam on sleeve. Press elbow seam apart, Press the hem of sleeve. Sew and press apart front sleeve seam.
6. Sew sleeves into armholes matching notches, adjusting ease along upper side of sleeve cap. Sew shoulder pads.
7. Sew and press apart the shoulder edges of the back neckline facing and of the center front facing. Sew together pieces of lining in the same way as you have sewn pieces from main fabric, leaving an opening in left elbow seam of sleeve. Sew lining to facing and to central front facings.
8. Pin together jacket and lining right sides together, pin together, matching outer edges. Sew lining to center front facing and neckline. Sew lining to hem of jacket. Sew lining to hem of sleeve. Turn jacket right side out

through the opening. Baste lining to Shell along waist seam on front. Sew the opening closed.

TECHNICAL DRAWING:

