

Coat With Decorative Tab - Sewing Pattern #4967

Recommendations on fabric: natural/mixed fabric suitable for coats.

You will also need: lining; fusible interfacing; 2 buttons; 3 inner buttons.

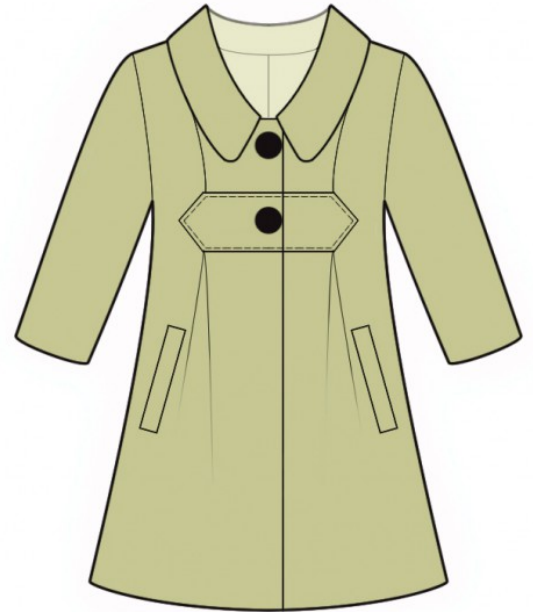
Seam allowances: all seams 1 cm. Seam allowance along lower edge of garment and lower edge of sleeve - 3 cm.

Note on seam allowances:

- If the pattern has double contour the seam allowances are included. They are 1 cm unless specified otherwise.
- If the pattern has single contour, the seam allowances are NOT included and need to be added when laying out the pattern.

Note on length of fabric:

Attention! The amount of fabric needed for your pattern is not included. It will depend on the selected pattern size, the width, and design of the fabric you plan to use. First, print all the paper patterns and lay them out at the width of fabric you plan to use (usually from 90 to 150 cm). Measure how much fabric you will need. Don't forget to account for pieces that need to be cut multiple times and pieces that are cut on the fold.



CUTTING:

Note on cutting:

On the pattern pieces, "beam" means straight of grain. Lay out your pieces accordingly. Some pieces will be cut on the fold. This is noted on the pattern piece. Mark all notches and other design features such as pleats etc. from the pattern onto your fabric.

When sewing the garment, pay attention to notches, they must match up.

Main fabric:

1. Center back — cut 2
2. Side back - cut 2
3. Center front - cut 2
4. Side front - cut 2
5. Strap - cut 2
6. Upper sleeve - cut 2
7. Lower sleeve - cut 2

8. Collar - cut 2
9. Back neck facing - cut 1
10. Center front facing - cut 2
11. Pocket welt - cut 2
12. Underlay piece - cut 2

Lining:

1. Center back — cut 2
2. Side back - cut 2
3. Center front - cut 2
4. Side front - cut 2
5. Upper sleeve - cut 2
6. Lower sleeve - cut 2
7. Large pocket bag - cut 2
8. Small pocket bag - cut 2

Fusible interfacing:

1. Center front facing - cut 2
2. Back neck facing - cut 1
3. Collar - cut 1

INSTRUCTIONS:

1. Apply fusible interfacing.
2. Sew center back seam. Press the seam allowances apart. Sew side backs to center back. Press the seam apart.
3. Mark the position of pocket. Press welt in half lengthwise wrong sides together. Topstitch small pocket bag onto inner side of welt. Topstitch underlay piece onto bigger pocket bag. Sew welt to front along lower marked line of pocket. Sew large pocket bag to front along upper marked line of pocket. Stop stitching near short marking lines of the pocket. Slash through pocket opening. Snip diagonally toward end of stitching at 1-1.5 cm from end of pocket opening. Turn welt and large pocket bag onto wrong side through the resulting opening. Sew a double back stitch lines near corners to fix ends of pockets. Sew together edges of pocket bags.
4. Make and baste a box pleat on side front, matching the triangular markings. Snip into the corner of the seam allowance. Sew center front to side front. Press the seam apart.
5. Fold under the upper, lower and side seam allowance of the decorative piece and press. Pin the piece onto front and topstitch at 0.3-0.5 cm.
6. Sew shoulder and side seams. Press the seam apart.

7. Sew front seam on sleeve, press the seam apart. Sew elbow seam on sleeve. Press the seam apart. Sew sleeves into armholes. Press seam.
8. Make buttonholes for inner buttons on the right center front facing (button stand). Sew shoulder seams of central front facings and facings. Press the seam apart.
9. Pin together collars right sides together and sew. Start and stop stitching exactly at the marked line of the neckline seam of collar. Trim seam allowances, clip into curves, turn right side out and press.
10. Place center front facing onto front right sides together and sew along the center front edge, sewing the upper corners up to the center line. Sew the upper collar into the neckline center front facings and facings. Sew lower collar into the neckline of the main piece. Press the seam apart and baste together.
11. Sew seams on lining, leaving an opening in left side seam.
12. Sew lining to the central front facings and to facing. Sew lower edge of lining to hem of garment. Sew lining to hem of sleeve. Turn right side out through the opening. Sew the opening closed.
13. Serge two button loops on right front. Sew on buttons on the left one. Sew on inner buttons.

TECHNICAL DRAWING:

