

Safari Dress - Sewing Pattern #4957

Recommendations on fabric: natural/mixed fabric suitable for dresses.

You will also need: fusible interfacing; 9 buttons; elastic tape; decorative cord.

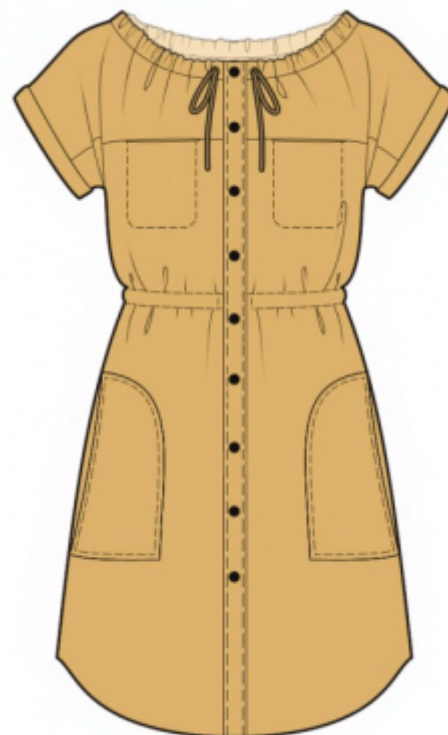
Seam allowances: all seams 1 cm. Seam allowance along hem of garment - 1.5 cm.

Note on seam allowances:

- If the pattern has double contour the seam allowances are included. They are 1 cm unless specified otherwise.
- If the pattern has single contour, the seam allowances are NOT included and need to be added when laying out the pattern.

Note on length of fabric:

Attention! The amount of fabric needed for your pattern is not included. It will depend on the selected pattern size, the width, and design of the fabric you plan to use. First, print all the paper patterns and lay them out at the width of fabric you plan to use (usually from 90 to 150 cm). Measure how much fabric you will need. Don't forget to account for pieces that need to be cut multiple times and pieces that are cut on the fold.



CUTTING:

Note on cutting:

On the pattern pieces, "beam" means straight of grain. Lay out your pieces accordingly. Some pieces will be cut on the fold. This is noted on the pattern piece. Mark all notches and other design features such as pleats etc. from the pattern onto your fabric.

When sewing the garment, pay attention to notches, they must match up.

Main fabric:

1. Back yoke - cut 1
2. Back - cut 1 on fold
3. Front yoke - cut 2
4. Front - cut 2
5. Placket - cut 2
6. Cuff - cut 2

7. Upper pocket - cut 4
8. Lower pocket - cut 2
9. Casing - cut 1
10. Neckline facing - cut 1

Fusible interfacing:

1. Placket - cut 2
2. Cuff - cut 2

INSTRUCTIONS:

1. Apply fusible interfacing.
2. Sew back yoke to yoke, press seam allowances towards yoke and serge.
3. Serge upper pockets along side and lower edges. Pin pocket onto yoke right sides together, and sew, press seam allowances at yoke. Pin pocket onto front, right sides together, and sew. Clip into seam allowances near the markings of pocket. Sew front yoke to front from center front edge to pocket and from second notch to armhole, press seam allowances towards yoke, serge. Topstitch pocket bags onto front from the wrong side.
4. Serge pocket opening on lower pocket, press onto wrong side and topstitch. Press the unsewn seam allowances of pocket onto the wrong side. Pin lower pocket onto front according to markings and topstitch.
5. Sew side and shoulder seams, press towards the back and serge.
6. Make buttonholes near top edge of front for threading in the decorative cord. Pin neckline facing onto garment right sides together and sew upper edge. Clip seam allowances, fold facing onto wrong side. Fold under lower edge of facing and press and topstitch, making a casing.
7. Fold under inner edge of placket onto wrong side and press. Pin placket onto front right sides together and sew center front edge and upper corner. Turn placket onto wrong side and topstitch onto front along the inner edge.
8. Fold under and press all seam allowances of casing onto the wrong side. Pin casing onto garment from the wrong side and sew along the marked lines. Thread elastic tape into casing and fix with vertical stitches at the beginning of the casing.
9. Sew cuff into a ring, press the seam apart. Fold cuff in half lengthwise right side out. Sew cuff to wrong side of sleeve, serge. Fold cuff to right side.
10. Serge lower edge of garment, press onto wrong side and topstitch.
11. Make buttonholes on right placket, sew on buttons on the left one. Thread in decorative cord into the upper

casing.

TECHNICAL DRAWING:

