

## Blouse With Flounce - Sewing Pattern #4931

Recommendations on fabric: natural/mixed fabrics suitable for blouses.

You will also need: fusible interfacing; 1 button.

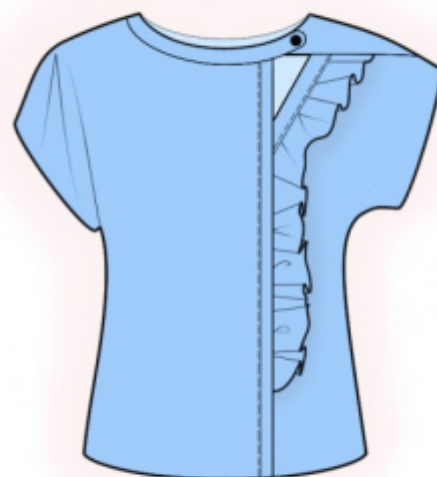
Seam allowances: Seam allowance along hem of garment - 1.5 cm; seam allowance on lower edge of sleeve - 2 cm; outer seam allowance of flounce - 0 cm; Other seams - 1.0 cm.

### Note on seam allowances:

- If the pattern has double contour the seam allowances are included. They are 1 cm unless specified otherwise.
- If the pattern has single contour, the seam allowances are NOT included and need to be added when laying out the pattern.

### Note on length of fabric:

*Attention! The amount of fabric needed for your pattern is not included. It will depend on the selected pattern size, the width, and design of the fabric you plan to use. First, print all the paper patterns and lay them out at the width of fabric you plan to use (usually from 90 to 150 cm). Measure how much fabric you will need. Don't forget to account for pieces that need to be cut multiple times and pieces that are cut on the fold.*



## CUTTING:

### Note on cutting:

*On the pattern pieces, "beam" means straight of grain. Lay out your pieces accordingly. Some pieces will be cut on the fold. This is noted on the pattern piece. Mark all notches and other design features such as pleats etc. from the pattern onto your fabric.*

*When sewing the garment, pay attention to notches, they must match up.*

Main fabric:

1. Right front - cut 1
2. Left front - cut 1
3. Back - cut 1
4. Flounce - cut 1
5. Front neck facing - cut 2
6. Back neck facing - cut 1

7. Front placket – cut 1

Fusible interfacing:

1. Front neck facing - cut 2
2. Back neck facing - cut 1
3. Front placket – cut 1

## INSTRUCTIONS:

1. Apply fusible interfacing. Also apply fusible interfacing to one-piece placket on left front.
2. Fold one piece placket on left front onto right side along the marked line and press.
3. Finish outer edge of flounce with thin rolled hem. Sew a gathering stitch along inner edge and gather fullness or make and baste pleats as desired. Baste flounce to center edge of left front and slanted line marked with wavy line. Fold one-piece placket onto right side along the marked line, fold seam allowance inside and topstitch at 0.2 cm from the edge.
4. Pin right side of front placket onto wrong side of right front, inserting left front in between (right side towards placket). Fold away left front and placket, press seam allowance onto right part. Fold placket onto right front, turn under the seam allowance of placket and press. Topstitch placket onto front at 0.2 cm from the edge.
5. Pin front neckline facings right sides together and sew along upper edge and rounded area up to mark. Trim seam allowances, clip into curves. Turn right side out *обтачку* onto right side and press. Make a buttonhole. Sew outer facing to front neckline, turn under seam allowance of inner facing and stitch in the ditch.
6. Serge outer edge of back neckline facing. Pin facing onto back, right side down, and sew neckline and inner part from closure to mark. Start and stop stitching exactly at the marked seamline. Trim seam allowances, clip into curves. Fold the facing onto wrong side and press.
7. Sew shoulder seams, placing them between inner and outer facing. Left front is placed on the left between facings. Press seams towards back, serge. Turn pieces right side out.
8. Sew side seams, press towards the back and serge.
9. Serge lower edge of garment and lower edge of sleeve, press onto wrong side and topstitch.
10. Sew on a button.

**TECHNICAL DRAWING:**

