

Dress With Cape - Sewing Pattern #4917

Recommendations on fabric: natural/mixed fabric suitable for dresses.

You will also need: fusible interfacing; elastic tape, its width should equal 0.3 – 0.5 cm; 5 buttons.

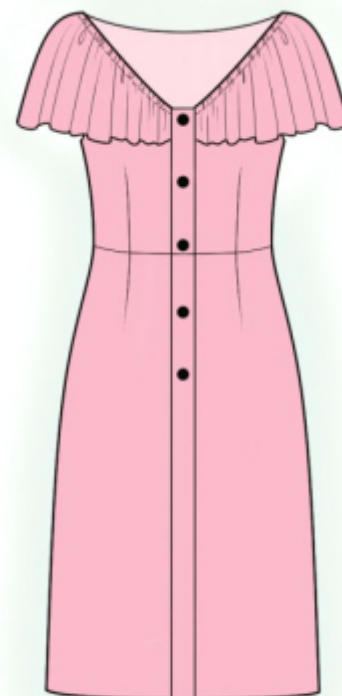
Seam allowances: all seams 1 cm; seam allowance for hem of dress – 3 cm.

Note on seam allowances:

- If the pattern has double contour the seam allowances are included. They are 1 cm unless specified otherwise.
- If the pattern has single contour, the seam allowances are NOT included and need to be added when laying out the pattern.

Note on length of fabric:

Attention! The amount of fabric needed for your pattern is not included. It will depend on the selected pattern size, the width, and design of the fabric you plan to use. First, print all the paper patterns and lay them out at the width of fabric you plan to use (usually from 90 to 150 cm). Measure how much fabric you will need. Don't forget to account for pieces that need to be cut multiple times and pieces that are cut on the fold.



CUTTING:

Note on cutting:

On the pattern pieces, "beam" means straight of grain. Lay out your pieces accordingly. Some pieces will be cut on the fold. This is noted on the pattern piece. Mark all notches and other design features such as pleats etc. from the pattern onto your fabric.

When sewing the garment, pay attention to notches, they must match up.

Main fabric:

1. Upper back — cut 2
2. Upper front - cut 2
3. Lower back — cut 2
4. Lower front - cut 2
5. Placket - cut 2
6. Front cape - cut 2

7. Back cape – cut 1 on fold

Fusible interfacing:

1. Placket — cut 2

INSTRUCTIONS:

1. Apply fusible interfacing to plackets.
2. Sew darts on front and on back, press bulk towards center. Sew upper front to lower front, serge seams and press towards top.
3. Sew center back seam. Serge seam and press towards left.
4. Sew shoulder and side seams, press towards the back and serge.
5. Sew shoulder seams on capes. Serge seams and press towards back. Hem the cape, using baby hem technique. Pin dress and cape together, wrong sides together and sew neckline. Fold cape onto right side and sew a stitch at 0.7 cm from neckline, making a casing. Thread elastic tape into casing, adjust length and slipstitch elastic tape and cape edge near the center edge.
6. Cut or use ready-made bias tape, its width should equal 4 cm and length should equal the length of armhole + 5 cm. Fold bias tape in half lengthwise right side out and press. Pin bias tape onto edge of armhole from the right side and sew. Clip into seam allowances. Fold bias tape onto wrong side and topstitch onto main piece along the seam. Press seam.
7. Fold placket in half lengthwise right sides together and sew upper corner. Stop stitching exactly at the marked line. Turn right side out placket onto right side and press. Sew outer side to front, press the seam allowance at placket. Fold under the seam allowance of the inner side inside and topstitch into seam of.
8. Seam allowance for hem serge, press onto wrong side and topstitch.
9. Make buttonholes along center front. Sew on buttons on left front so that they match the buttonholes.

TECHNICAL DRAWING:

