

## Dress With In-Seam Pockets - Sewing Pattern #4826

Recommendations on fabric: thin natural/mixed fabric suitable for dresses.

You will also need: dress zipper; two buttons; fusible interfacing.

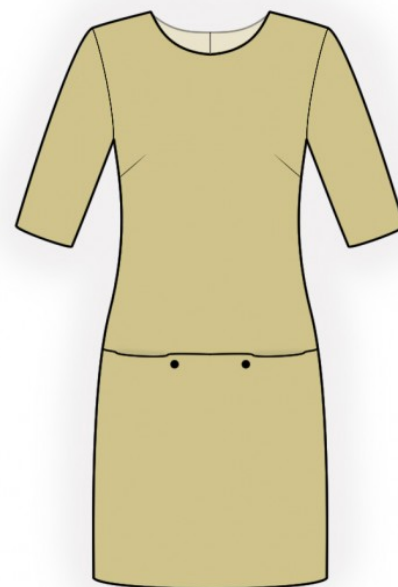
Seam allowances: all seams 1 cm. Seam allowance along hem - 3.0 cm, seam allowance of sleeve hem - 2 cm, seam allowance along vent 6 cm.

### Note on seam allowances:

- If the pattern has double contour the seam allowances are included. They are 1 cm unless specified otherwise.
- If the pattern has single contour, the seam allowances are NOT included and need to be added when laying out the pattern.

### Note on length of fabric:

*Attention! The amount of fabric needed for your pattern is not included. It will depend on the selected pattern size, the width, and design of the fabric you plan to use. First, print all the paper patterns and lay them out at the width of fabric you plan to use (usually from 90 to 150 cm). Measure how much fabric you will need. Don't forget to account for pieces that need to be cut multiple times and pieces that are cut on the fold.*



## CUTTING:

### Note on cutting:

*On the pattern pieces, "beam" means straight of grain. Lay out your pieces accordingly. Some pieces will be cut on the fold. This is noted on the pattern piece. Mark all notches and other design features such as pleats etc. from the pattern onto your fabric.*

*When sewing the garment, pay attention to notches, they must match up.*

Main fabric:

1. Back - cut 2
2. Lower front - cut 1 on fold
3. Upper front - cut 1 on fold
4. Back neck facing - cut 2
5. Front neck facing - cut 1
6. Sleeve - cut 2

Lining:

1. Bigger pocket bag - cut 1
2. Smaller pocket bag - cut 1

Fusible interfacing:

1. Back neck facing - cut 2
2. Front neck facing - cut 1

**INSTRUCTIONS:**

1. Apply interfacing to facings.
2. Sew darts on back and front, press bulk of waist darts towards center, press bulk of bust darts towards top.
3. Serge center back edges separately. Trim away 5 cm on left center back along vertical edge of the vent. Apply interfacing to the vent on both sides of center back on the wrong side. Mark center seam line (vent fold-line) from the right side. Press left part along vent fold, on the right side press onto wrong side only the seam allowance of right side of vent (6 cm). Align pieces along center seam and baste together along upper edge of vent. Serge seam allowances of vent. Sew center back seam from mark to vent corner. Clip into seam allowance of vent in corner on right part. Press apart center seam, press seam allowances of the vent and sew them together by machine. Sew in zipper.
4. Pin bigger pocket bag onto lower front, right sides together, and sew. Topstitch seam allowance onto pocket bag at 0.2 cm from the seam. Fold pocket bag onto wrong side and press the fold. Sew smaller pocket bag to upper front. Serge seam allowance and topstitch it onto the pocket bag. Pin lower front onto upper front along the marked line, aligning the lower seam allowances of pocket bags. Fold lower part of dress towards top, sew and serge lower edge of pocket bags. Sew a fixing stitch along the upper edge of lower front, forming the pockets. (See the wiggly lines on the pattern block for lining).
5. Sew side and shoulder seams, press towards the back and serge.
6. Sew the shoulder seams of the neckline facings, press the seam apart. Serge the outer edge. Pin facing to garment right sides together and sew the neckline. Fold the facing onto wrong side, straighten, press. Slip stitch facing to self garment along shoulder seams and center back seam.
7. Sew sleeve seam. Serge and press. Sew sleeve into armhole, matching notches. Serge and press.
8. Serge lower edge of dress and lower edge of sleeves, press onto wrong side and topstitch.
9. Sew on decorative buttons onto pockets.

**TECHNICAL DRAWING:**

