

Long Vest (No Wrap) - Sewing Pattern #4825

Recommendations on fabric: natural/mixed suiting fabrics.

You will also need: lining; fusible interfacing; hook and eye.

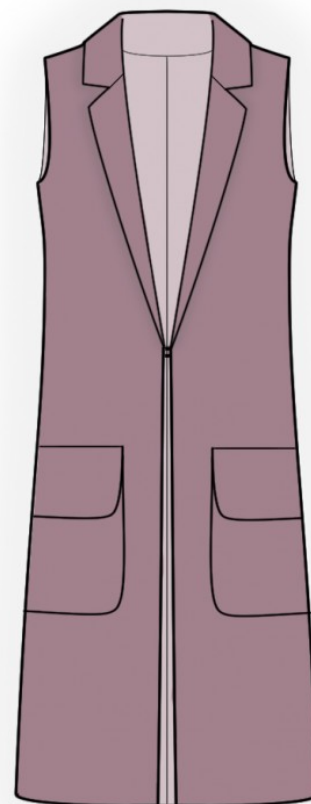
Seam allowances: all seams 1 cm; seam allowance along hem of vest - 2.5 cm; seam allowance along upper edge of pocket and flap 2 cm.

Note on seam allowances:

- If the pattern has double contour the seam allowances are included. They are 1 cm unless specified otherwise.
- If the pattern has single contour, the seam allowances are NOT included and need to be added when laying out the pattern.

Note on length of fabric:

Attention! The amount of fabric needed for your pattern is not included. It will depend on the selected pattern size, the width, and design of the fabric you plan to use. First, print all the paper patterns and lay them out at the width of fabric you plan to use (usually from 90 to 150 cm). Measure how much fabric you will need. Don't forget to account for pieces that need to be cut multiple times and pieces that are cut on the fold.



CUTTING:

Note on cutting:

On the pattern pieces, "beam" means straight of grain. Lay out your pieces accordingly. Some pieces will be cut on the fold. This is noted on the pattern piece. Mark all notches and other design features such as pleats etc. from the pattern onto your fabric.

When sewing the garment, pay attention to notches, they must match up.

Main fabric:

1. Center back - cut 2
2. Side back - cut 2
3. Front - cut 2
4. Center front facing - cut 2
5. Back neck facing - cut 1
6. Pocket - cut 2
7. Collar - cut 2

8. Flap - cut 4

Lining:

1. Central part lining спинки - cut 2
2. Side back lining - cut 2
3. Front lining - cut 2

Fusible interfacing:

1. Center front facing - cut 2
2. Back neck facing - cut 1
3. Flap - cut 2

INSTRUCTIONS:

1. Apply fusible interfacing.
2. Sew darts on front, press bulk towards center.
3. Pin together flaps, right sides together, and sew along side and lower edges. Trim seam allowances, snip into curves. Turn right side out flap onto right side and press. Serge pocket edges. Upper fold inside the seam allowance and topstitch. Fold inside inside side and lower seam allowances and press. Topstitch pocket according to markings. Mark the position of the flap by 1 cm higher than the pocket. Pin flap onto front, aligning its lower edge with the marked line. Sew on flap, fold it down and sew a fixing stitch along upper edge.
4. Sew darts on back. Press bulk towards center. Cut away 5 cm along vertical edge of vent on lower left back. Apply interfacing to the vent on both sides of center back on the wrong side. Mark center seam line (vent fold-line) from the right side. Press left part along vent fold, on the right side press onto wrong side only the seam allowance of right side of vent (6 cm). Align pieces along center seam and baste together along upper edge of vent. Serge center back edges separately. Serge seam allowances of vent. Sew center back seam up to vent corner. Clip into seam allowance of vent in corner on right part. Press apart center seam, press seam allowances of vent and topstitch them from the right side using machine stitch.
5. Sew side backs to center back. Serge seams and press towards center.
6. Sew shoulder seams. Press the seam apart. Sew side seams. Serge the seam allowances and press apart.
7. Pin collars together right sides together and sew collar ends and the outer edge of collar. Trim away corners, turn collar right side out and press.
8. Sew shoulder edges of center front facings and back neckline facing. Press the seam allowances apart.
9. Serge inner seam allowance of center front facing from mark to hem. Pin center front facing onto front, right sides together, and sew around center front edge and lapels, inserting hook and eye into the seam. Turn center

front facings and facing onto wrong side, straighten seams. Sew lower collar into the neckline of the main piece. Sew the upper collar into the neckline center front facings and facings, press the seam apart. Baste collars together.

10. Sew seams on lining. Serge lower edge, turn inside and topstitch.
11. Sew lining to inner edges of the central front facings and to back neckline facing. Sew armhole in two steps: first sew the front armhole, then sew the back armhole.
12. Serge lower edge of the vest.
13. Fold inside the lower edge, press and finish with hidden stitches.

TECHNICAL DRAWING:

