

## Dress With Belt - Sewing Pattern #4824

Recommendations on fabric: natural/mixed knit fabric of medium stretchiness.

Seam allowances: all seams 1 cm. Seam allowance along neckline 1.5 cm, seam allowance for hem of garment and hem of sleeve - 2 cm.

### Note on seam allowances:

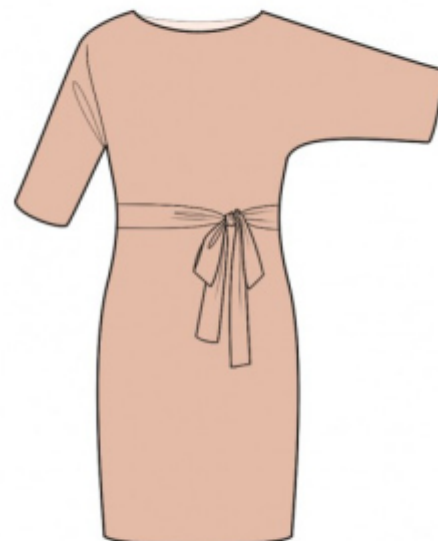
- If the pattern has double contour the seam allowances are included. They are 1 cm unless specified otherwise.
- If the pattern has single contour, the seam allowances are NOT included and need to be added when laying out the pattern.

### Note on length of fabric:

Attention! The amount of fabric needed for your pattern is not included. It will depend on the selected pattern size, the width, and design of the fabric you plan to use. First, print all the paper patterns and lay them out at the width of fabric you plan to use (usually from 90 to 150 cm). Measure how much fabric you will need. Don't forget to account for pieces that need to be cut multiple times and pieces that are cut on the fold.

### Note on working with stretchy fabric:

Knitted fabric pieces are sewn together with special elastic or narrow zig-zag stitch. Seam allowance on hems can be stitched with twin needles to save stretchiness. Pieces can also be sewn together with a serger. When serging, cut seam allowances to 0.6 - 0.8 cm.



## CUTTING:

### Note on cutting:

On the pattern pieces, "beam" means straight of grain. Lay out your pieces accordingly. Some pieces will be cut on the fold. This is noted on the pattern piece. Mark all notches and other design features such as pleats etc. from the pattern onto your fabric.

When sewing the garment, pay attention to notches, they must match up.

Main fabric:

1. Upper back - cut 1
2. Upper front - cut 1
3. Lower back - cut 1

- 4. Lower front – cut 1
- 5. Belt – cut 1

## **INSTRUCTIONS:**

1. Sew upper front to lower front, sew upper back to lower back. Serge seams and press towards top.
2. Sew shoulder seams. Serge seams and press towards back.
3. Sew side seams sewing the sleeve edges at the same time, press towards the back and serge.
4. Serge seam allowance along neckline, fold inside onto wrong side and topstitch.
5. Serge hem and lower edge of sleeves, press onto wrong side and topstitch.
6. Belt pin together in half lengthwise right sides together and sew around all edges, leaving an opening for turning. Trim away corners, belt turn right side out, press, sew the opening closed.

Tip: You may finish neckline with bias tape, in this case please trim away seam allowances along neckline.

## **TECHNICAL DRAWING:**

