

Dress With Knit Insets - Sewing Pattern #4823

Recommendations on fabric: natural/mixed fabric suitable for dresses, natural/mixed knit fabric of small/medium stretchiness.

You will also need: dress zipper; two decorative of the zipper; fusible interfacing.

Seam allowances: all seams 1 cm. Seam allowance along hem of dress - 3.0 cm; seam allowance along vent - 6 cm; seam allowance of sleeve hem - 2 cm.

Note on seam allowances:

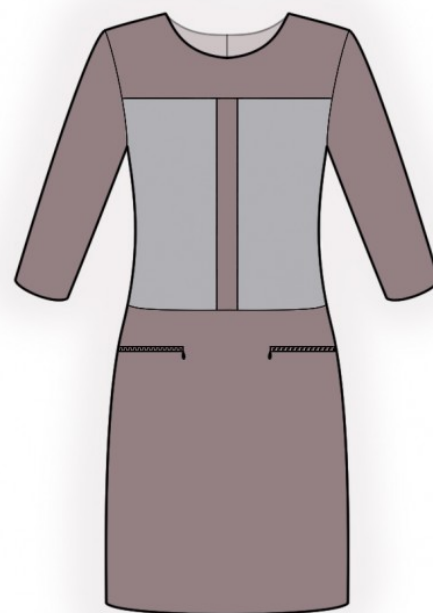
- If the pattern has double contour the seam allowances are included. They are 1 cm unless specified otherwise.
- If the pattern has single contour, the seam allowances are NOT included and need to be added when laying out the pattern.

Note on length of fabric:

Attention! The amount of fabric needed for your pattern is not included. It will depend on the selected pattern size, the width, and design of the fabric you plan to use. First, print all the paper patterns and lay them out at the width of fabric you plan to use (usually from 90 to 150 cm). Measure how much fabric you will need. Don't forget to account for pieces that need to be cut multiple times and pieces that are cut on the fold.

Note on working with stretchy fabric:

Knitted fabric pieces are sewn together with special elastic or narrow zig-zag stitch. Seam allowance on hems can be stitched with twin needles to save stretchiness. Pieces can also be sewn together with a serger. When serging, cut seam allowances to 0.6 - 0.8 cm.



CUTTING:

Note on cutting:

On the pattern pieces, "beam" means straight of grain. Lay out your pieces accordingly. Some pieces will be cut on the fold. This is noted on the pattern piece. Mark all notches and other design features such as pleats etc. from the pattern onto your fabric.

When sewing the garment, pay attention to notches, they must match up.

Main fabric:

1. Back - cut 2

2. Front yoke - cut 1
3. Placket - cut 1
4. Lower front - cut 1
5. Sleeve - cut 2
6. Back neck facing - cut 2
7. Front neck facing - cut 1

Knit fabric:

1. Middle front - cut 2

Fusible interfacing:

1. Back neck facing - cut 2
2. Front neck facing - cut 1

INSTRUCTIONS:

1. Apply interfacing to facings.
2. Sew shoulder and waist darts on backs, press bulk towards center of pieces.
3. Serge center back edges separately. Trim away 5 cm along vertical edge of vent on left back. Apply fusible interfacing to vent area on backs from the wrong side. Mark center seam line (vent fold-line) from the right side. Press left part along vent fold, on the right side press onto wrong side only the seam allowance of right side of vent (6 cm). Align pieces along center seam and baste together along upper edge of vent. Serge seam allowances of vent. Sew center back seam from zipper marker down to vent corner. Clip into seam allowance of vent in corner on right part. Press apart center seam, press seam allowances of the vent and sew them together by machine. Sew in zipper.
4. Mark the position of the pocket on lower front. Check if the line of the pocket opening is correct and straight. Slash through pocket opening. Snip diagonally toward end of stitching at 1-1.5 cm from end of pocket opening. Fold seam allowances of the pocket under through the resulting opening, straighten the edges. Adjust pocket from the wrong side. Pin zipper under the edge of pocket opening so that you can see the teeth. Sew in zipper.
5. Sew placket to center fronts, press seam allowances onto placket and serge.
6. Sew yoke to center front, press seam allowances towards yoke and serge. Sew lower front to center front, press towards top and serge.
7. Sew side and shoulder seams, press towards the back and serge.
8. Sew the shoulder seams of the neckline facings, press the seam apart. Serge the outer edge. Pin facing to garment right sides together and sew the neckline. Fold the facing onto wrong side, straighten, press. Slip stitch facing to self garment along shoulder seams and center back seam.

9. Sew sleeve seam, serge and press. Sew sleeves into armholes, matching notches, serge and press.
10. Serge lower edge of dress and lower edge of sleeves, press onto wrong side and topstitch.

TECHNICAL DRAWING:

