

Coat With Notched Collar - Sewing Pattern #4803

Recommendations on fabric: natural/mixed fabric suitable for coats.
You will also need: lining; fusible interfacing; 5 buttons; shoulder pads.

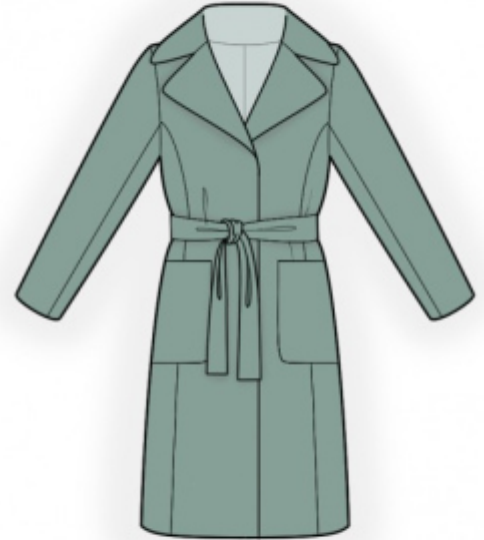
Seam allowances: all seams 1 cm. Seam allowance for hem of garment and hem of sleeve - 3 cm, upper seam allowance of pocket - 2 cm.

Note on seam allowances:

- If the pattern has double contour the seam allowances are included. They are 1 cm unless specified otherwise.
- If the pattern has single contour, the seam allowances are NOT included and need to be added when laying out the pattern.

Note on length of fabric:

Attention! The amount of fabric needed for your pattern is not included. It will depend on the selected pattern size, the width, and design of the fabric you plan to use. First, print all the paper patterns and lay them out at the width of fabric you plan to use (usually from 90 to 150 cm). Measure how much fabric you will need. Don't forget to account for pieces that need to be cut multiple times and pieces that are cut on the fold.



CUTTING:

Note on cutting:

On the pattern pieces, "beam" means straight of grain. Lay out your pieces accordingly. Some pieces will be cut on the fold. This is noted on the pattern piece. Mark all notches and other design features such as pleats etc. from the pattern onto your fabric.

When sewing the garment, pay attention to notches, they must match up.

Main fabric:

1. Center back - cut 2
2. Side back - cut 2
3. Center front - cut 2
4. Side front - cut 2
5. Upper collar - cut 1
6. Lower collar - cut 1
7. Upper sleeve - cut 2

8. Lower sleeve - cut 2
9. Back neck facing - cut 1
10. Center front facing - cut 2
11. Belt - cut 1
12. Pocket - cut 2

Lining:

1. Center back - cut 2
2. Side back - cut 2
3. Center front - cut 2
4. Side front - cut 2
5. Upper sleeve - cut 2
6. Lower sleeve - cut 2
7. Lining of hidden button panel - cut 2

Attention: Lining for back and front is cut using pattern pieces for main fabric except for back neckline facing and central front facings correspondingly.

Fusible interfacing:

1. Center front - cut 2
2. Center front facing — cut 2
3. Upper collar - cut 1
4. Back neck facing — cut 1
5. Lining of hidden button panel - cut 1

Fusing interfacing is also applied to seam allowances on back armhole, lower edge of garment and lower edge of sleeve.

INSTRUCTIONS:

1. Apply fusible interfacing.
2. Sew darts on back, press bulk towards center. Sew side backs to center back. Press the seam apart. Sew center back seam. Press apart center seam.
3. Sew side fronts to front, clip into curves and press apart.
4. Serge the upper edge of pocket, fold seam allowance inside and topstitch. Serge and press seam allowances inside, pin pocket onto front and topstitch at 0.1 cm from the edge.
5. Sew shoulder and side edges of coat, clip seam allowances and press apart.
6. Mark closure slit with three lines, on the right side of right button stand (centre front facing). The first line

should be parallel to vertical edge of closure and runs at 1.5 cm from the edge when ready, the second and third line mark the length of closure. Pin lining (should be with fusible interfacing applied!) onto the centre front facing, right sides together, matching the edge of lining with the marked line. Stitch at 0.5 cm from the marked line along the closure slit up to the lines that mark the closure length. Pin the second closure lining, matching its edge with the stitched line, and stitch at 0.5 cm. Check if the stitches are parallel on the wrong side. Cut the slit. Clip into corners at 1.5 cm from the closure ends. Turn the linings onto wrong side through the resulting opening, making a slit frame, which equals the distance between stitch lines. Sew a fixing stitch in the ditch of the lining seam. Press the second lining towards inner edge of centre front facing and sew a fixing stitch at 0.1 cm from the lining seam. Mark and make buttonholes. They are made on centre front facing and interfaced lining. Straighten the ends of closure and fix them from the wrong side, with double stitch at the base of corners. Sew edges of lining. Make short fastening stitches between each pair of buttonholes, the length of the fixing stitch equals the width of the frame. Press center front facing.

7. Pin collars together right sides together and sew around all edges. Trim away corners, turn right side out and press.

8. Sew shoulder seams of central front facings and facings, press the seam apart.

9. Press seam allowance on lower edge. Pin center front facing onto front, right sides together, and sew center front and lapels. Start and stop stitching exactly at the marked lines. Trim away corners, turn the center front edges onto the right side, straighten seams.

10. Sew lower collar into self neckline. Press the seam apart. Sew upper collar into neckline of center front facings and neckline facing. Press the seam apart. Baste together seam allowances along collar seam.

11. Sew the elbow seam of the sleeve and press it apart. Press the hem of sleeve. Sew and press apart front sleeve seam. Sew sleeve into armhole. Sew on shoulder pads.

12. Sew seams on lining, leaving an opening in left side seam for turning. Sew pykava. Sew lining to the central front facings and to facing.

13. Sew lining to lower edge of garment and lower edge of sleeve. Turn coat right side out through the opening. Sew the opening closed.

14. Sew a decorative stitch on right front according to markings, fixing in place hidden button panel. Sew on buttons according to button holes.

15. Fold belt in half lengthwise and sew around all edges, leaving an opening in the middle of belt. Trim seam allowances, turn right side out and press.

TECHNICAL DRAWING:

