

Dress With Flared Skirt - Sewing Pattern #2178

Recommendations on fabric: natural/mixed fabric suitable for dresses.

You will also need: fusible interfacing; 1 dress zipper.

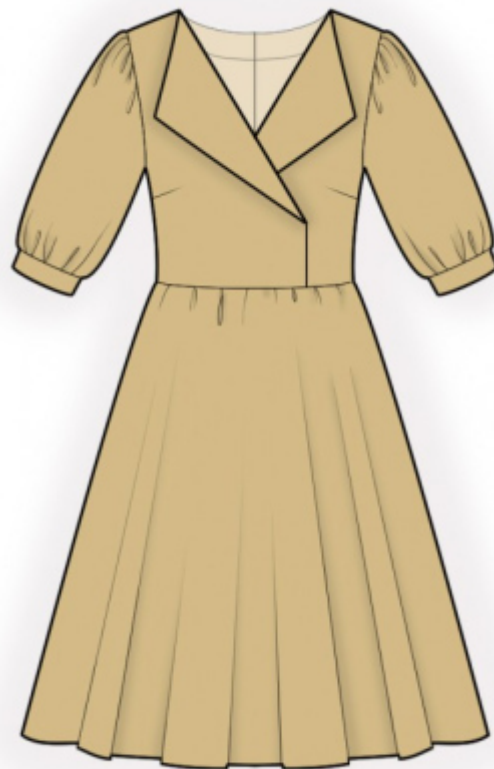
Seam allowances: all seams 1 cm; seam allowance for hem of garment - 2.0 cm.

Note on seam allowances:

- If the pattern has double contour the seam allowances are included. They are 1 cm unless specified otherwise.
- If the pattern has single contour, the seam allowances are NOT included and need to be added when laying out the pattern.

Note on length of fabric:

Attention! The amount of fabric needed for your pattern is not included. It will depend on the selected pattern size, the width, and design of the fabric you plan to use. First, print all the paper patterns and lay them out at the width of fabric you plan to use (usually from 90 to 150 cm). Measure how much fabric you will need. Don't forget to account for pieces that need to be cut multiple times and pieces that are cut on the fold.



CUTTING:

Note on cutting:

On the pattern pieces, "beam" means straight of grain. Lay out your pieces accordingly. Some pieces will be cut on the fold. This is noted on the pattern piece. Mark all notches and other design features such as pleats etc. from the pattern onto your fabric.

When sewing the garment, pay attention to notches, they must match up.

Main fabric:

1. Upper back - cut 2
2. Lower back - cut 2
3. Upper front - cut 2
4. Lower front - cut 1 on fold
5. Center front facing - cut 2
6. Back neck facing - cut 2
7. Sleeve - cut 2

8. Cuff - cut 2

Fusible interfacing:

1. Back neck facing - cut 2
2. Center front facing - cut 2
3. Cuff - cut 2

INSTRUCTIONS:

1. Apply fusible interfacing.
2. Sew waist darts on upper back, press bulk towards center. Sew a gathering stitch along the upper edge of lower back and gather fullness. Sew upper back to lower back, press towards top and serge.
3. Serge center back edges separately on each piece. Sew center back seam from notch for zipper to bottom, press the seam apart. Sew in zipper.
4. Sew bust darts on fronts, press bulk towards top.
5. Serge outer edge of center front facing. Pin center front facing onto the Upper Front and sew the edge of the lapel and the center front edge from the shoulder sleeve down to hem. Clip into seam allowances near the shoulder seam, turn center front facing onto wrong side, straighten, press.
6. Put right front onto left front, matching the center lines, baste together along the lower edge and center front edge. Sew a gathering stitch along the upper edge of lower front and gather fullness. Sew upper front to lower front, serge and press towards bottom.
7. Serge outer edge of back neckline facing. Pin neckline facing onto Back and sew neckline exactly up to the marked line of shoulder seam. Clip seam allowances, fold facing onto wrong side and press. Slipstitch facing to zipper tape.
8. Sew shoulder seams, inserting Front between Back and back neckline facing. Press seams towards back and serge.
9. Sew side seams, press towards the back and serge.
10. Sew sleeve seam, serge and press. Sew a gathering stitch along the sleeve cap and gather fullness. Sew sleeves into armholes, serge and press.
11. Sew cuff into a ring, press the seam apart. Fold cuff in half lengthwise and press right side out. Sew a gathering stitch along lower edge of sleeve and gather fullness. Sew outer side of cuff to sleeve, fold under the seam allowance of the inner side inside and stitch-in-the-ditch along seam of outer side.

12. Serge bottom edge of garment, press onto wrong side and topstitch.

TECHNICAL DRAWING:

