

## Jacket With Trimming - Sewing Pattern #2165

Recommendations on fabric: natural/mixed suiting fabric.

You will also need: fusible interfacing; lining; 1 separating zipper; 2 small zippers, shoulder pads, sleeve heads.

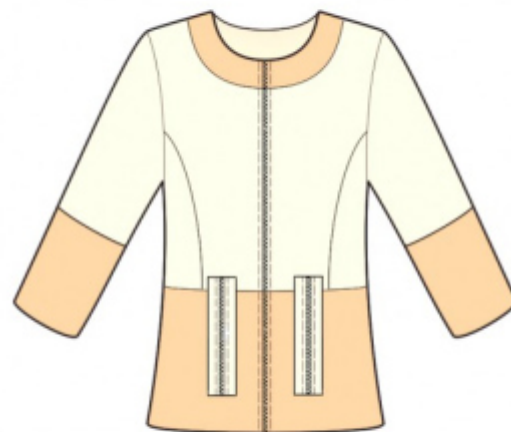
Seam allowances: all seams 1 cm. Seam allowance on lower edge of sleeve – 3 cm.

### Note on seam allowances:

- If the pattern has double contour the seam allowances are included. They are 1 cm unless specified otherwise.
- If the pattern has single contour, the seam allowances are NOT included and need to be added when laying out the pattern.

### Note on length of fabric:

*Attention! The amount of fabric needed for your pattern is not included. It will depend on the selected pattern size, the width, and design of the fabric you plan to use. First, print all the paper patterns and lay them out at the width of fabric you plan to use (usually from 90 to 150 cm). Measure how much fabric you will need. Don't forget to account for pieces that need to be cut multiple times and pieces that are cut on the fold.*



## CUTTING:

### Note on cutting:

*On the pattern pieces, "beam" means straight of grain. Lay out your pieces accordingly. Some pieces will be cut on the fold. This is noted on the pattern piece. Mark all notches and other design features such as pleats etc. from the pattern onto your fabric.*

*When sewing the garment, pay attention to notches, they must match up.*

Main fabric:

1. Center back – cut 1 on fold
2. Side back – cut 2
3. Center front – cut 2
4. Side front – cut 2
5. Upper sleeve – cut 2
6. Lower sleeve – cut 2
7. Center front facing – cut 2

8. Back neck facing – cut 1
9. Pocket welt – cut 4

Decorative fabric:

1. Lower back – cut 1
2. Lower front – cut 2
3. Back neckline trimming – cut 1
4. Front neckline trimming – cut 2
5. Upper sleeve trimming – cut 2
6. Lower sleeve trimming – cut 2

Lining:

1. Center back – cut 2
2. Center front – cut 2
3. Side back – cut 2
4. Side front – cut 2
5. Upper sleeve – cut 2
6. Lower sleeve – cut 2
7. Lower front – cut 2
8. Lower back – cut 1

Fusible interfacing: center front, back neckline trimming, center front facing, back neck facing, pocket welts.

Attention: lining is cut using pattern blocks for self fabric except for the area of center front facing and back neckline facing.

## INSTRUCTIONS:

1. Apply fusible interfacing.
2. Sew back neckline trimming to back. Press towards trimming. Sew side backs to center back. Press towards center. Sew lower back to garment. Press the seam allowances apart.
3. Sew front neckline trimming to front. Press towards trimming. Sew side fronts to center front. Press towards center. Sew lower front. Press the seam allowances apart.
4. Mark the position of the faux pocket. Press welt in half lengthwise wrong sides together. Sew pocket welts to front according to the lines marking the position of the pocket. Stop stitching near short marking lines of the pocket. Slash through pocket opening. Snip diagonally toward end of stitching at 1-1.5 cm from end of pocket opening. Turn the off-set welts onto the right sides through the resulting opening. Pin the zipper under the off-set welts. The edges of the off-set welts do not cover the teeth of the zipper. Sew the zipper to the off-set welt at 0.5 cm from the zipper teeth. Sew a double back stitch lines near corners to fix ends of pockets.

5. Sew and press apart shoulder and side edges of jacket.
6. Sew the sleeve trimming to the upper sleeve. Press the seam apart. Sew the sleeve trimming to the lower sleeve. Press the seam apart. Sew the elbow seam of the sleeve and press it apart. Sew and press apart front sleeve seam. Press seam allowance of the lower edge of garment inside. Sew sleeves into armholes matching notches. Sew shoulder pads, sew sleeve heads.
7. Sew and press apart the shoulder edges of the back neckline facing and of the center front facing.
8. Sew seams on lining and sew in sleeves, leaving an opening for turning in front right sleeve seam. Sew lining to the central front facings and to facing.
9. Place center front facing onto front right sides together, insert the zipper (the teeth are directed away from the center) and sew along center front, along lower edge, and along neckline. Sew lining to hem of sleeve. Turn jacket right side out through the opening. Baste together the seam allowances of waist seams. Sew the opening in sleeve closed.

## **TECHNICAL DRAWING:**

