

Dress With Flared Skirt - Sewing Pattern #2107

Recommendations on fabric: natural/mixed fabric suitable for dresses.

You will also need: 6 buttons.

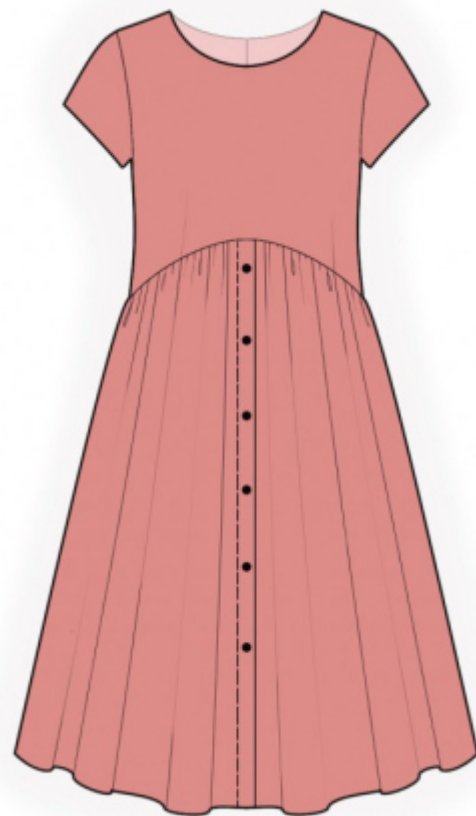
Seam allowances: Seam allowance for hem of garment and hem of sleeve – 2 cm; other seams – 1 cm.

Note on seam allowances:

- If the pattern has double contour the seam allowances are included. They are 1 cm unless specified otherwise.
- If the pattern has single contour, the seam allowances are NOT included and need to be added when laying out the pattern.

Note on length of fabric:

Attention! The amount of fabric needed for your pattern is not included. It will depend on the selected pattern size, the width, and design of the fabric you plan to use. First, print all the paper patterns and lay them out at the width of fabric you plan to use (usually from 90 to 150 cm). Measure how much fabric you will need. Don't forget to account for pieces that need to be cut multiple times and pieces that are cut on the fold.



CUTTING:

Note on cutting:

On the pattern pieces, "beam" means straight of grain. Lay out your pieces accordingly. Some pieces will be cut on the fold. This is noted on the pattern piece. Mark all notches and other design features such as pleats etc. from the pattern onto your fabric.

When sewing the garment, pay attention to notches, they must match up.

Main fabric:

1. Upper back - cut 2
2. Upper front - cut 1 on fold
3. Lower back - cut 2
4. Lower front - cut 2
5. Placket — cut 2
6. Sleeve - cut 2

INSTRUCTIONS:

1. Fold one-piece placket onto wrong side and press. Fold under the edge of inner side of placket and topstitch. Make buttonholes on right front. Put right front onto left front and baste together along the upper edges
планок.
2. Sew a gathering stitch along the upper edges of lower backs and lower fronts and gather fullness. Sew upper parts to lower parts. Press towards top and serge. Sew center back seam. Serge the seam allowances and press towards left.
3. Sew side and shoulder seams, press towards the back and serge.
4. Cut or use ready-made bias tape, its width should equal 4 cm and length should equal the length of neckline + 6 cm. Fold bias tape in half lengthwise right side out and press. Pin bias tape to neckline from the right side and sew. Fold bias tape onto wrong side, clip into seam allowances and topstitch onto main piece along the seam. Press seam.
5. Sew sleeve seams, press towards back and serge. Sew sleeves into armholes, serge and press.
6. Fold under hem of dress and hem of sleeve two times at 1 cm and topstitch.
7. Sew on buttons on the left front.

TECHNICAL DRAWING:

