

## Dress With Flounces - Sewing Pattern #2093

Recommendations on fabric: natural/mixed fabric suitable for dresses.

You will also need: elastic thread.

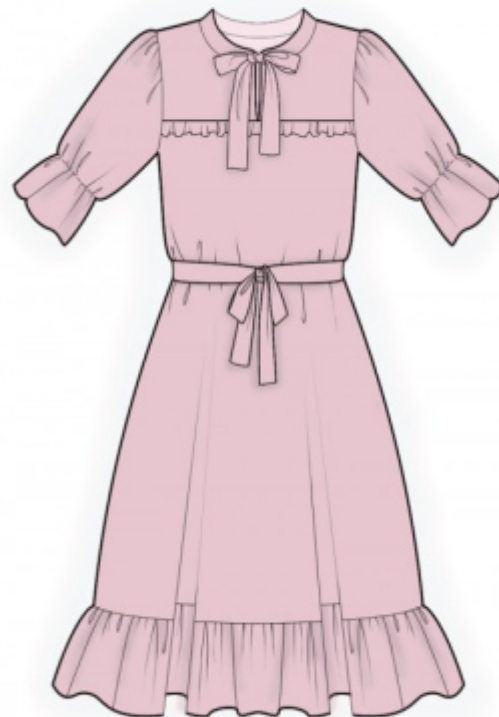
Seam allowances: all seams 1 cm; seam allowance for hem of dress and hem of sleeve – 2.0 cm. Seam allowance along center edge of front yoke – 2.0 cm.

### Note on seam allowances:

- If the pattern has double contour the seam allowances are included. They are 1 cm unless specified otherwise.
- If the pattern has single contour, the seam allowances are NOT included and need to be added when laying out the pattern.

### Note on length of fabric:

*Attention! The amount of fabric needed for your pattern is not included. It will depend on the selected pattern size, the width, and design of the fabric you plan to use. First, print all the paper patterns and lay them out at the width of fabric you plan to use (usually from 90 to 150 cm). Measure how much fabric you will need. Don't forget to account for pieces that need to be cut multiple times and pieces that are cut on the fold.*



## CUTTING:

### Note on cutting:

*On the pattern pieces, "beam" means straight of grain. Lay out your pieces accordingly. Some pieces will be cut on the fold. This is noted on the pattern piece. Mark all notches and other design features such as pleats etc. from the pattern onto your fabric.*

*When sewing the garment, pay attention to notches, they must match up.*

Main fabric:

1. Back - cut 1
2. Front - cut 1 on fold
3. Front yoke - cut 2
4. Sleeve - cut 2
5. Lower flounce - cut 1
6. Belt - cut 1

- 7. Flounce of yoke – cut 1
- 8. Collar – cut 1

## **INSTRUCTIONS:**

1. Sew darts on front. Press bulk of bust darts towards top.
2. Fold under the seam allowance of center edge of yoke two times by 1 cm and topstitch. Fold flounce of yoke in half lengthwise wrong sides together and press. Sew a gathering stitch along upper edge and make slight gathers. Pin flounce onto front and baste together. Sew front flounces, placing center edges of yoke so that they meet each other. Press seam allowance towards bottom and serge.
3. Sew side and shoulder seams, press towards the back and serge.
4. Sew lower flounce into a ring. Press the seam allowances apart. Make gathers on flounce and sew it to the hem of dress.
5. Sew a gathering stitch along the cap of sleeve. And gather fullness. Sew a stitch with elastic thread along the marked line on the sleeve. Sew sleeve seam, press towards the back and serge. Sew sleeves into armholes matching notches and adjusting ease, serge and press.
6. Fold collar in half lengthwise right sides together and sew corners and ties up to notch. Clip into seam allowances near notches, trim away corners. Turn collar right side out. Sew outer collar into neckline. Fold inside seam allowance of inner collar and topstitch into seam of outer collar.
7. Fold belt in half lengthwise right sides together and sew around all edges, leaving an opening for turning. Trim away corners, turn right side out and press. Sew the opening closed.
8. Serge seam allowance for hem of garment and hem of sleeve, press onto wrong side and topstitch.

## **TECHNICAL DRAWING:**

