

Recommendations on fabric: wool / wool blend fabric.

You will also need: fusible interfacing; 1 button, lining, shoulder pad, sleeve heads.

Seam allowances: 1 cm for all seams, 3 cm for garment hem and sleeve hems.

Note on seam allowances:

- If the pattern has double contour the seam allowances are included. They are 1 cm unless specified otherwise.
- If the pattern has single contour, the seam allowances are NOT included and need to be added when laying out the pattern.

Note on length of fabric:

Attention! The amount of fabric needed for your pattern is not included. It will depend on the selected pattern size, the width, and design of the fabric you plan to use. First, print all the paper patterns and lay them out at the width of fabric you plan to use (usually from 90 to 150 cm). Measure how much fabric you will need. Don't forget to account for pieces that need to be cut multiple times and pieces that are cut on the fold.



CUTTING:

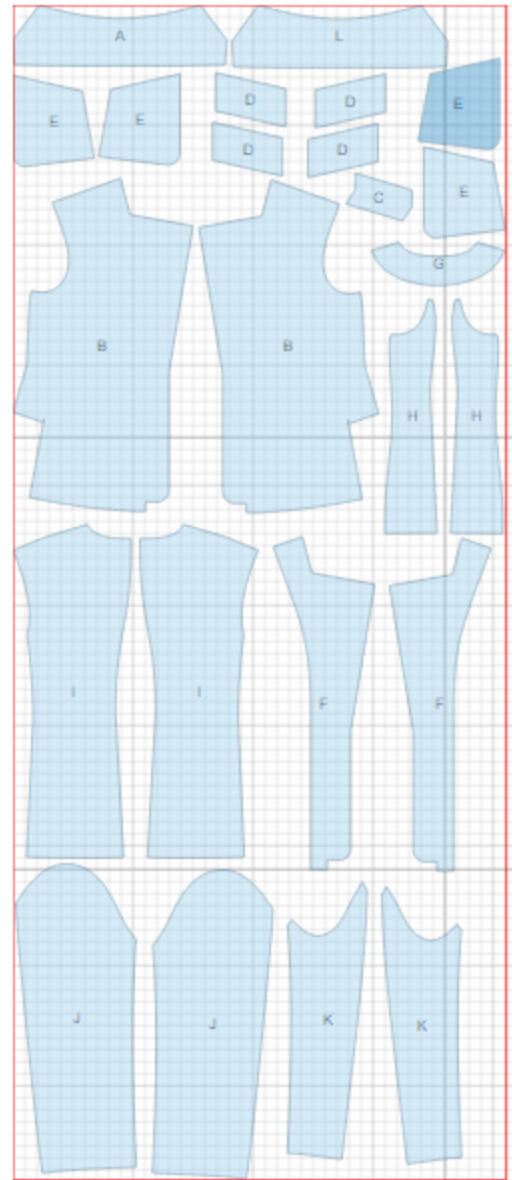
Main fabric:

1. Inner collar - cut 1 (A)
2. Front - cut 2 (B)
3. Off-set welt - cut 1 (C)
4. Flap - cut 4 (D)
5. Pocket bag - cut 4 (E)
6. Front facing - cut 2 (F)
7. Back neck facing - cut 1 (G)
8. Side - cut 2 (H)
9. Back - cut 2 (I)
10. Upper sleeve - cut 2 (J)
11. Lower sleeve - cut 2 (K)
12. Outer collar - cut 1 (L)

Lining:

1. Front - cut 2 (B)
2. Side - cut 2 (H)
3. Back - cut 2 (I)
4. Pocket bag - cut 4 (E)
5. Upper sleeve - cut 2 (J)
6. Lower sleeve - cut 2 (K)

Fusible interfacing: front facing, flap, off-set welt, front part, sleeve hem and garment hem, back neck facing.



INSTRUCTIONS:

1. Apply fusible interfacing to listed pieces.
2. Sew back darts and press them towards center. Sew front darts and cut away bulk (if desired). Cut pocket opening.
3. Fold off-set welt along center line wrong side out and press it. Sew ends, trim seam in corners and turn the welt right side out. Press. Mark bust pocket location. Sew the welt to front, turn it upwards and topstitch along sides.
4. Lay flaps on lining flaps, right sides together, and sew. Trim seam in corners and turn flap right side out. Place inner and outer collars right sides together and sew outer edge. Trim seams, turn collar right side out, straighten and press.
5. Cut facings for side pocket. Tack pocket opening. Press pocket facings along the center, wrong side inside. Mark auxiliary line on pocket facing parallel to facing fold. Mark auxiliary line on flap parallel flap upper edge measuring flap width all the way. Mark auxiliary lines parallel to pocket opening (for sewing the flap and pocket facings). Sew pocket bag to flap. Sew facings to front (finish stitching near parallel lines of pocket marking). Stitches must be parallel to each other. Cut pocket opening. Make diagonal cuts at 1-1.5 cm from opening ends. Turn facings to wrong side through the opening, straighten edges; align ends of facings so that their edges come edge-to-edge. Reinforce pocket ends with double reverse stitch from wrong side. Sew pocket bag to flap. Insert the flap into pocket and sew it to outer facing of pocket. Sew inner pocket bag into lower facing connecting seam, adjust and sew pocket bags.
6. Pin front facing to front right sides together, and sew center front up to the collar connection mark. Sew lower edges of front facings to front exactly along hem line. Trim seams of upper/lower facing corners. Understitch allowance of front facing at 0.2 cm from the seam: at closure section – on front facing, on lapel section – on center front. Turn facing toward inside and press seams.
7. Sew center back seam and press open. Sew sides to fronts and backs, press seams open. Sew side and shoulder seams. Press seams open.
8. Sew shoulder seams of front facings and back neck facing. Sew outer collar into neckline and inner collar into back facing neckline.
9. Sew elbow seam and press open. Sew sleeve front seam and press open. Press lower edge of sleeve.

-
10. Make a gathering stitch along the sleeve cap to adjust ease. Sew sleeves into armholes matching notches and adjusting ease. Sew shoulder pads and sleeve heads.
 11. Sew lining together and sew in sleeve linings, leaving an opening in front right seam.
 12. Sew lining to inner edges of front facings and back neck facing. Press collar seams open and fix near seams.
 13. Sew lining to lower edge of jacket. Turn the garment right side out through the opening in sleeve. Sew opening closed.
 14. Make a buttonhole on right front and sew a button on left front.

TECHNICAL DRAWING:

