

Recommendations on fabric: silk.

You will also need: lining, 3 buttons, fusible interfacing, shoulder pads, sleeve heads.

Seam allowances: hem of dress and lower edge of sleeves – 3.0 cm, other seams – 1 cm.

Note on seam allowances:

- If the pattern has double contour the seam allowances are included. They are 1 cm unless specified otherwise.

- If the pattern has single contour, the seam allowances are NOT included and need to be added when laying out the pattern.

Note on length of fabric:

Attention! The amount of fabric needed for your pattern is not included. It will depend on the selected pattern size, the width, and design of the fabric you plan to use. First, print all the paper patterns and lay them out at the width of fabric you plan to use (usually from 90 to 150 cm). Measure how much fabric you will need. Don't forget to account for pieces that need to be cut multiple times and pieces that are cut on the fold.



CUTTING:

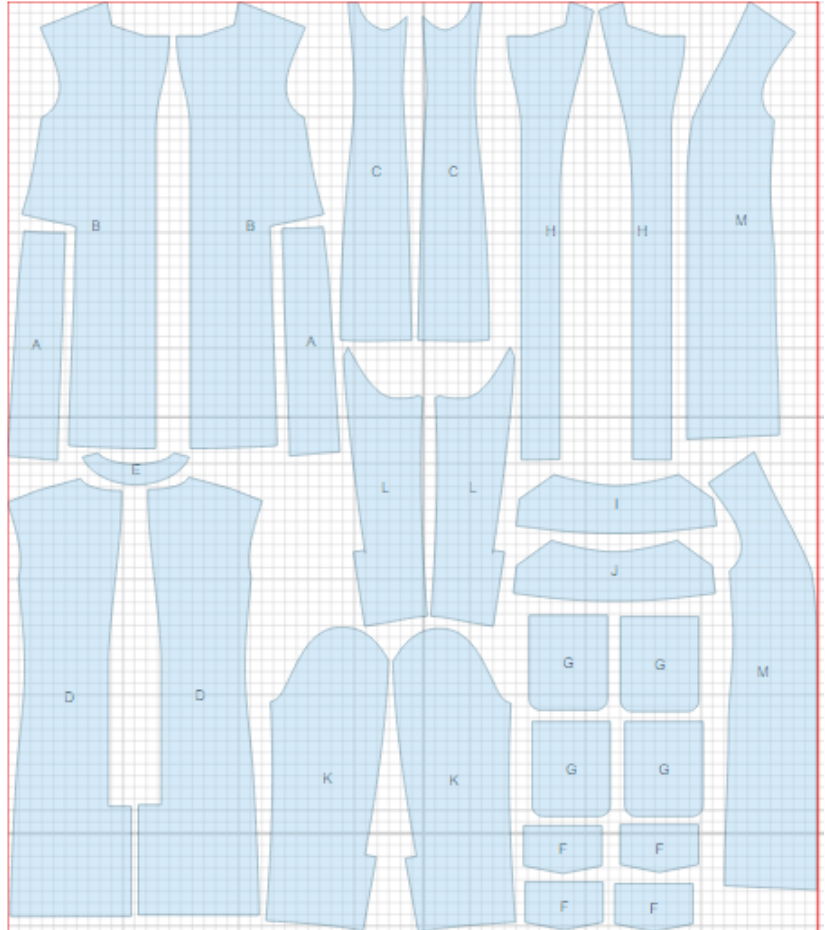
Main fabric:

1. Side lower front – cut 2 (A)
2. Center front – cut 2 (B)
3. Side – cut 2 (C)
4. Center back – cut 2 (D)
5. Back neck facing – cut 1 (E)
6. Flap - cut 4 (F)
7. Front facing - cut 2 (H)
8. Inner collar - cut 1 (I)
9. Outer collar - cut 1 (J)
10. Upper sleeve – cut 2 (K)
11. Lower sleeve – cut 2 (L)

Lining:

1. Front – cut 2 (M)
2. Side – cut 2 (C)
3. Center back – cut 2 (D)
4. Pocket - cut 4 (G)
5. Upper sleeve – cut 2 (K)
6. Lower sleeve – cut 2 (L)

*ATTENTION: Lining is cut using main fabric patterns excluding front (use piece M for front lining). Add a pleat on lining.



Fusible interfacing: front facing, flaps, upper edge of pocket (tape 2-3 cm longer than pocket opening), front, back neck facing, vent, lower edge of sleeve and hem of jacket.

INSTRUCTIONS:

1. Apply interfacing to listed pieces.
2. Mark darts on fronts and backs. Sew shoulder darts on backs. Press bulk towards center. Sew darts on fronts to marks, trim bulk. Cut pocket opening.
3. Sew side lower front to front. Press seam open.
4. Place flaps right sides together and sew side and lower edges. Trim seams in corners. Turn flap right side out, straighten and press. Place collars right sides together and sew outer side. Trim seams in corners. Turn collar right side out, straighten and press.
5. Cut a facing for side slash pocket. Apply fusible interfacing to pocket opening. Fold facings in half lengthwise wrong sides together and press. Mark an auxilliary line on pocket facing parallel to fold. Mark an auxilliary line on flap parallel to upper edge of flap. Mark auxilliary lines parallel to pocket opening for sewing facings and flap. Sew facings to front. End stitch at parallel lines of pocket marking. Facing connection seams should be parallel on the wrong side. Cut pocket opening. At 1 - 1.5 cm from pocket ends make cuts to corners. Turn facing to inside through the opening, straighten edges. Adjust ends of facing so that folds of facings were edge to edge. Fasten pocket ends from inside with double back stitch. Sew pocket bag to flap. Set flap into pocket and sew to upper pocket facing. Sew lower pocket bag into lower facing connecting seam. Sew edges of pocket bags.
6. Sew center back seam to vent mark. Press lower vent edge at 1 cm. Press center back seam and vent. Topstitch center back seam at upper end of vent as marked catching vent seam allowance.
7. Mark hem turnup line. Pin front facing to front right sides together and sew along front center edge. Sew from front side up to mark of collar connection. Sew lower edges of front facings to fronts exactly on marked hem turnup line. Trim seams in corners. Topstitch seam onto front facing along closure section and onto front bands on lapel section. Stitch at 0.2 cm from seam. Turn front bands right side out, straighten seams.
8. Sew side backs to center back. Press seams open. Sew side fronts to fronts. Press seams open. Sew shoulder seams and press open.
9. Sew and press open shoulder seams of front facings and back neck facing. Sew lower collar into neckline, outer collar into facing neckline.
10. Sew and press open elbow sleeve seam. Sew and press open front sleeve seam. Press lower edge of sleeve under.

-
11. Sew sleeve into armhole matching notches and adjusting ease on sleeve cap. Sew shoulder pads and sleeve heads.
12. Sew seams on lining and sew in sleeves leaving an opening in front seam of right sleeve. Press. Sew lining to inner edges of front facings and back neck facing. Press collar connection seams open and fasten close to seams.
13. Turn lower edge of lining sleeve under and sew to sleeve. Turn extra lining down and press. Turn jacket right side out. Straighten lining, pin on back seams and cut lining along vent edges shifting at 1 cm towards center seam. At 1 cm from top of vent make slanting cuts to both sides. Turn edges under and pin to vent edges. Catch pinned edges with your hand between jacket and lining and pull them out. Sew edges, straighten vent edges. Turn lining corner at top edge of vent under and sew it to vent seam allowance. Sew lining to hem of jacket. Turn jacket through the opening in sleeve. Sew opening closed.
14. Make buttonholes on right front. Sew buttons on left front.

TECHNICAL DRAWING:

