

Sewing Pattern — Blouse 5657

Recommendations on fabric: middle/high stretchable jersey (natural or mixed)

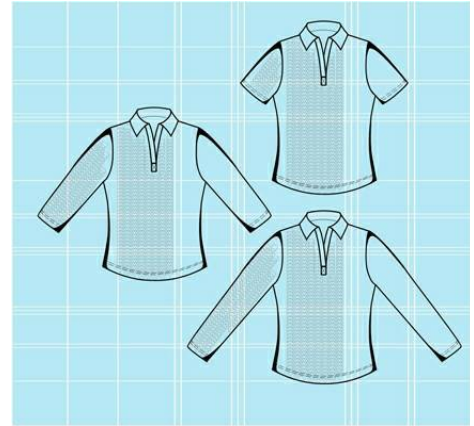
If the pattern has double contour the seam allowances are included.

Seam allowances are NOT included by default and need to be added when laying out and cutting details if your pattern has single contour.

Seam allowances: 1.5 cm for hem/sleeve hems, 1 cm for other seams, 0 cm for placket contour

Attention! First of all please print all the paper patterns and lay them out at the width of fabric you plan to use (usually from 90 to 150 cm) to see how much fabric you will need. Don't forget to count pair parts and symmetrical parts.

When sewing the garment, pay attention to notches, they must coincide.



CUTTING:

Knit fabric:

1. Back part – 1 piece
2. Front part – 1 piece
3. Sleeve – 2 pieces
4. Collar – 1 piece
5. Placket – 2 pieces

Our advice: stitch jersey details with special elastic/zig zag stitches. If you use an overlock, cut seam allowances till 0.6-0.8 cm width. Topstitch hem allowances with double needle to save elasticity.

INSTRUCTIONS:

1. Mark on front part's right side: closure line, transverse line that point closure end, and two auxiliary lines at 1 cm from front part's middle (these lines define placket's width). Placket wise is 2 cms. Fold plackets along the center wrong side out near slash line. Stitch plackets along marked lines; stitch width is 1 cm. Cut front part along slash line stopping 1 cm before the edge; then cut diagonally to line of joining the placket. Turn the plackets right side out and press them. Fold seam allowance at placket's wrong side under and topstitch along the seam joining the placket. Fold the corner under. Turn plackets into wrong side, lay right placket on the left one and fix together catching the corner. Neaten placket's ends. Topstitch closure's lower edge as shown on the sketch.

2. Stitch shoulder/side edges of front/back parts. Neaten seams and press them backward.

3. Stitch sleeve seams. Neaten seams and press them sidewise.
4. Stitch sleeves into armholes coinciding notches. Neaten seams and press them.
5. Overstitch the collar, turn it right side out and press it. Stitch outer collar into neckline. Fold inner collar's allowances under and topstitch along the seam joining outer collar.
6. Neaten the hem and sleeve hems. Press edges into wrong side and topstitch.

TECHNICAL DRAWING:

