

Recommendations on fabric: light-weight woolen fabric.

You will also need: fusible interfacing, lining, 5 buttons.

Seam allowances: all seams 1 cm. Seam allowance for hem of garment and lower edge of sleeve - 1.5 cm.

**Note on seam allowances:**

- If the pattern has double contour the seam allowances are included. They are 1 cm unless specified otherwise.

- If the pattern has single contour, the seam allowances are NOT included and need to be added when laying out the pattern.

**Note on length of fabric:**

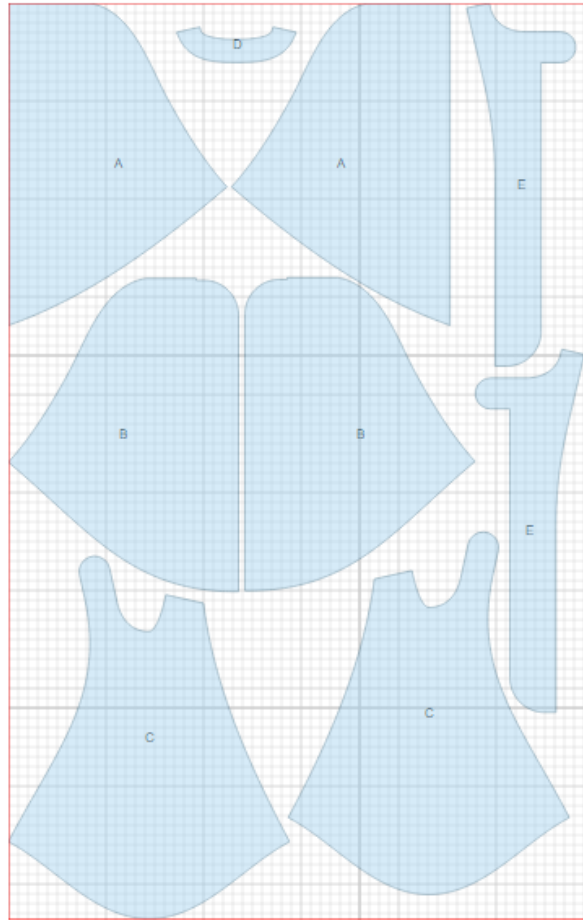
*Attention! The amount of fabric needed for your pattern is not included. It will depend on the selected pattern size, the width, and design of the fabric you plan to use. First, print all the paper patterns and lay them out at the width of fabric you plan to use (usually from 90 to 150 cm). Measure how much fabric you will need. Don't forget to account for pieces that need to be cut multiple times and pieces that are cut on the fold.*



**CUTTING:**

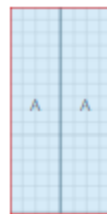
Main fabric:

1. Back - cut 2 (A)
2. Front - cut 2 (B)
3. Sleeve - cut 2 (C)
4. Back neck facing - cut 1 (D)
5. Front facing - cut 2 (E)



Lining:

1. Hidden front closure - cut 2 (A)



Fusible interfacing: front facing, back neck facing, front closure lining.

---

**INSTRUCTIONS:**

1. Apply fusible interfacing to wrong side of front facings, back neck facing, one of hidden front closure.
2. Cut off the closure tab on the left front facing and the left sleeve as marked. Only the RIGHT side tab is needed for the closure.
3. Sew center back seam. Serge and press seam toward left. Then topstitch.
4. Sew sleeves to back. Press seam toward sleeve, serge and topstitch.
5. Sew sleeves to fronts. Serge and press seams toward sleeves. Then topstitch.
6. Sew shoulder seams of front facings and back neck facing. Serge outer edge. Pin facing on garment right sides together, then sew center front, lower edge, and neckline. Trim corners and clip into curves. Press facing to inside of garment and topstitch.
7. Sew the hidden front closure, right sides together, leaving an opening for turning. Turn closure right side out. Make 4 buttonholes in the closure. Sew the closure onto the right side of the right front facing. Sew along the edge of three sides, leaving free the long vertical side that lines up close to the center front. Topstitch the closure from the outside of the garment. (refer to diagram).
8. Serge the lower edge of the garment, press under, then topstitch.
9. Make a buttonhole in the left front tab. Sew buttons as marked.

TECHNICAL DRAWING:

