

Recommendations on fabric: natural/mixed fabric suitable for jackets.

You will also need: fusible interfacing; lining; shoulder pads; decorative wide braid; 3 buttons; sheer interfacing.

Seam allowances: 1 cm for all seams, 3 cm for hems.

Note on seam allowances:

- If the pattern has double contour the seam allowances are included. They are 1 cm unless specified otherwise.
- If the pattern has single contour, the seam allowances are NOT included and need to be added when laying out the pattern.



Note on length of fabric:

Attention! The amount of fabric needed for your pattern is not included. It will depend on the selected pattern size, the width, and design of the fabric you plan to use. First, print all the paper patterns and lay them out at the width of fabric you plan to use (usually from 90 to 150 cm). Measure how much fabric you will need. Don't forget to account for pieces that need to be cut multiple times and pieces that are cut on the fold.

CUTTING:

Main fabric:

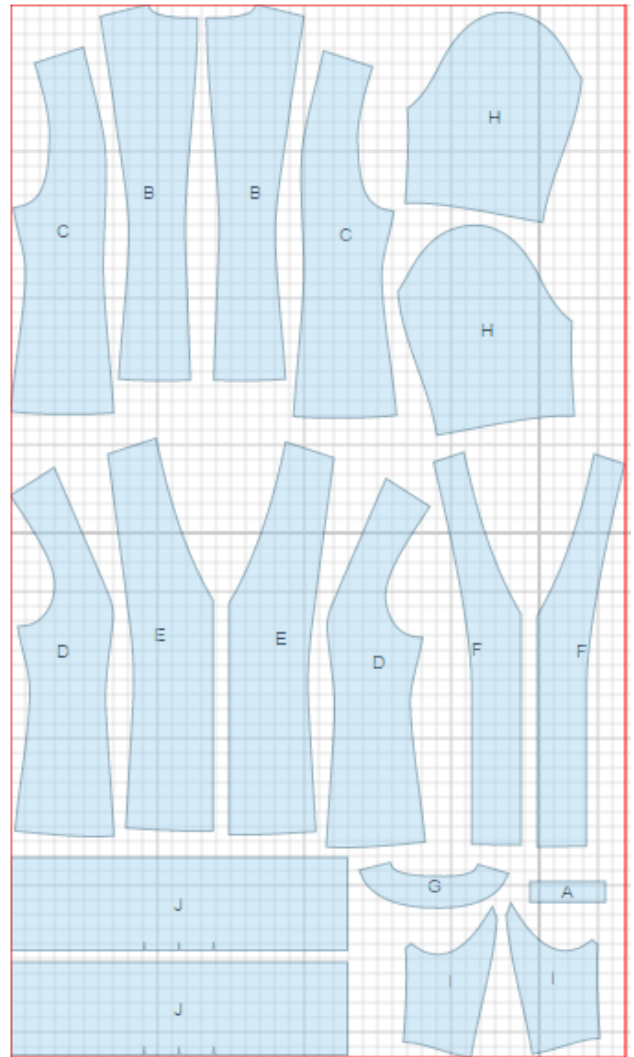
1. Center back – cut 2 (B)
2. Side back – cut 2 (C)
3. Side front – cut 2 (D)
4. Center front – cut 2 (E)
5. Front facing – cut 2 (F)
6. Back neck facing – cut 1 (G)
7. Upper sleeve – cut 2 (H)
8. Lower sleeve – cut 2 (I)
9. Cuff – cut 2 (J)
10. Off-set welt – cut 2 (A)

Lining:

1. Center back – cut 2 (B)
2. Side back – cut 2 (C)
3. Side front – cut 2 (D)
4. Center front – cut 2 (E)
5. Upper sleeve – cut 2 (H)
6. Lower sleeve – cut 2 (I)

Note: lining is cut from the same pattern, excluding the width of back neck facing and front facings.

Interfacing: front facings, back neck facing, center front, side front, off-set welt



INSTRUCTIONS:

1. Apply the interfacing to wrong side of front facings, back neck facing, center front and side front.
2. Sew side backs to center backs. Sew center back seam. Sew side fronts to center front. Press seams open.
3. Cut fabric valances with length equal to pocket entrance length+1.5-2 cm and of 4 cm width. Mark upper pocket places. Apply the interfacing to wrong side of pocket entrance. Press the welt along the center right side out. Stitch the welt to front part along pocket lower marking. Stitch the valance to front part along pocket upper marking. Stop stitching at short marking lines. Check if the welt

and the valance are correctly stitched (stitches on the strong side must be parallel). Cut the pocket entrance. Make diagonal cuts at 1-1.5 cm from pocket end. Turn the welt and the valance into wrong side through this hole, make welt's ends to set welt's fold close to the seam joining the valance. Fix pocket ends with double reverse stitches (wrong side) along corner base. Topstitch the welt on the valance along joining seam.

4. Sew shoulder seams and side seams and press open.
5. Sew shoulder seams of back neck facing and front facings and press open.
6. Apply additional fusing strip along front neck edge. Pin the facing to front side, right sides together, then sew along front edge and back neckline, easing fabric into front neckline. Trim and clip into seam, understitch and turn right side out.
7. Sew sleeve elbow seam and press open. Topstitch decorative braid along sleeve hems laying it parallel to lower allowance; do not overlap it. Sew sleeve front seam and press open.
8. Sew cuff into a ring. Press seam allowances open. Press hem allowance to wrong side and and serge with rolled hem or sew a narrow hem. Press pleats as marked. Sew the cuff to sleeve hem right sides together. Press the seam allowance toward the sleeve.
9. Sew sleeves into armholes according to notches. Sew in sleeve pads.
10. Sew lining together and sew in lining sleeves, leaving a hole in center back seam to turn garment right side out.
11. Sew the lining to inner edges of front facings and back neck facing. Clip into curves and snip corners. Mark, then press garment hem to wrong side. Sew garment hem to lining.
12. Sew sleeve lining hem allowances along the seam joining the cuff. Turn the jacket right side out through slit in center back.. Slipstitch opening closed.
13. Make buttonholes on right front edge, sew buttons on left front edge.

TECHNICAL DRAWING:

