

Recommendations on fabric: stretch denim

You will also need: fusible interfacing, 8 buttons.

Seam allowances: 1 cm for all seams, 5 cm for hem, 3 cm for back pocket's upper edge.

Note on seam allowances:

- If the pattern has double contour the seam allowances are included. They are 1 cm unless specified otherwise.
- If the pattern has single contour, the seam allowances are NOT included and need to be added when laying out the pattern.

Note on length of fabric:

Attention! The amount of fabric needed for your pattern is not included. It will depend on the selected pattern size, the width, and design of the fabric you plan to use. First, print all the paper patterns and lay them out at the width of fabric you plan to use (usually from 90 to 150 cm). Measure how much fabric you will need. Don't forget to account for pieces that need to be cut multiple times and pieces that are cut on the fold.

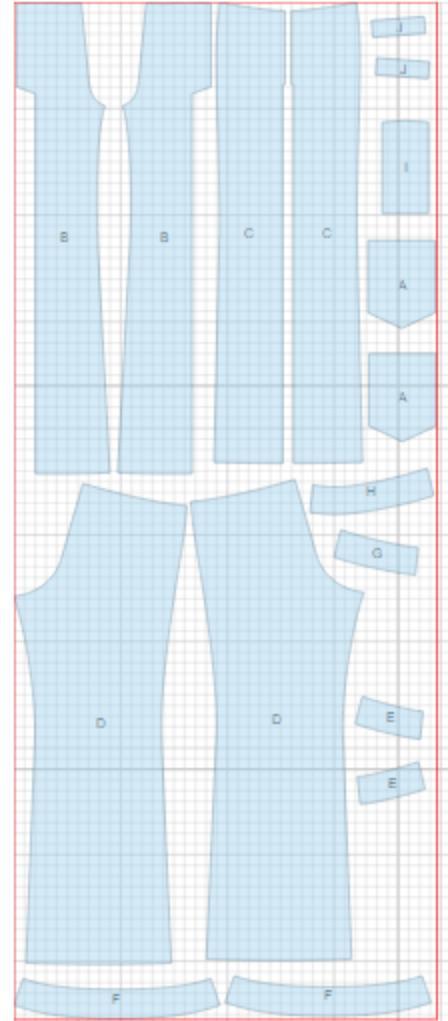


CUTTING:

Main fabric:

1. Center front – cut 2 (B)
2. Side front – cut 2 (C)
3. Back – cut 2 (D)
4. Side front waistband – cut 2 (E)
5. Back waistband/facing – cut 2 (F)
6. Left inner facing – cut 1 (H)
7. Right inner facing – cut 1 (G)
8. Button catch – cut 1 (I)
9. Back pocket – cut 2 (A)
10. Off-set welt – cut 2 (J)

Fusible interfacing: side front waistband, back waistband/facing, inner facings, off-set welt, button catch, center front facings.



INSTRUCTIONS:

1. Apply fusible interfacing to back facing, inner left and right facings, off-set welts, center front buttonhole self-facings.
2. Press back pockets upper allowance onto wrong side, fold under and topstitch. Serge or finish pocket edges, press allowances onto wrong side. Pin pockets on back as marked and topstitch.
3. Make Welt Pockets: Cut fabric valances with length equal to pocket entrance length 1.5-2 cm and 4 cm width. Mark pocket places on side fronts. Apply interfacing to wrong side of pocket entrance. Press the welt along the

center right side out. Stitch the welt to front along pocket lower marking. Stitch the valance to front along pocket upper marking. Stop stitching at short marking lines. Check if the welt and the valance are correctly stitched (stitches on the strong side must be parallel). Cut the pocket entrance. Make diagonal cuts at 1-1.5 cm from pocket end. Turn the welt and the valance onto wrong side through the slit, make welt's ends to set welt's fold close to the seam joining the valance. Fix pocket ends with double reverse stitches (wrong side) along corner base. Topstitch the welt on the valance along joining seam. Finish or serge valance edges with facing edges. Here's an excellent tutorial: [Welt Pocket](#)

4. Sew center back seam. Sew back waistband to back. Press seam toward waistband. Stitch front waistbands to side fronts. Press seam allowances toward the waistbands. Topstitch.

5. Left front: Serge or finish, the extended edges on left side front and left center front button self-facing. Make buttonholes on left center; do not catch button self-facing. Sew left side to left center. Topstitch seam from top to bottom (this side is a faux opening. The real opening is on the other side.) Topstitch on front over button self-facing (making the fly-front double stitch as on jeans).

6. Right front: Serge or finish the extended edges on right side front and right center front button self-facing. Press button self-facing onto wrong side.

Finish or serge bottom edge of button catch. Press the button catch in half, wrong sides together. Pin the catch right sides together along right front side, (along extended edge and waistband). Press seam allowance toward the button catch.

INSTRUCTIONS:

1. Apply fusible interfacing to back facing, inner left and right facings, off-set welts, center front buttonhole self-facings.

2. Press back pockets upper allowance onto wrong side, fold under and topstitch. Serge or finish pocket edges, press allowances onto wrong side. Pin pockets on back as marked and topstitch.

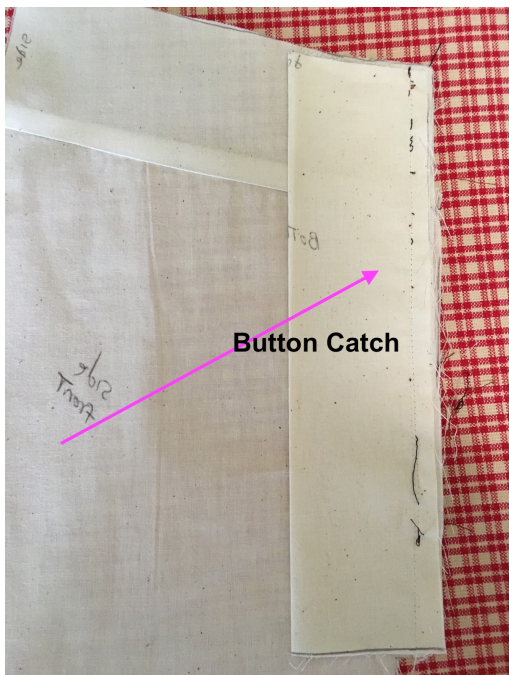
3. Make Welt Pockets: Cut fabric valances with length equal to pocket entrance length 1.5-2 cm and 4 cm width. Mark pocket places on side fronts. Apply interfacing to wrong side of pocket entrance. Press the welt along the center right side out. Stitch the welt to front along pocket lower marking. Stitch the valance to front along pocket upper marking. Stop stitching at short marking lines. Check if the welt and the valance are correctly stitched (stitches on the strong side must be parallel). Cut the pocket entrance. Make diagonal cuts at 1-1.5 cm from pocket end. Turn the welt and the valance onto wrong side through the slit, make welt's ends to set welt's fold close to the seam joining the valance. Fix pocket ends with double reverse stitches (wrong side) along corner base. Topstitch the welt on the valance along joining seam. Finish or serge valance edges with facing edges. Here's an excellent tutorial: [Welt Pocket](#)

4. Sew center back seam. Sew back waistband to back. Press seam toward waistband. Stitch front waistbands to side fronts. Press seam allowances toward the waistbands. Topstitch.

5. Left front: Serge or finish, the extended edges on left side front and left center front button self-facing. Make buttonholes on left center; do not catch button self-facing. Sew left side to left center. Topstitch seam from top to bottom (this side is a faux opening. The real opening is on the other side.) Topstitch on front over button self-facing (making the fly-front double stitch as on jeans).

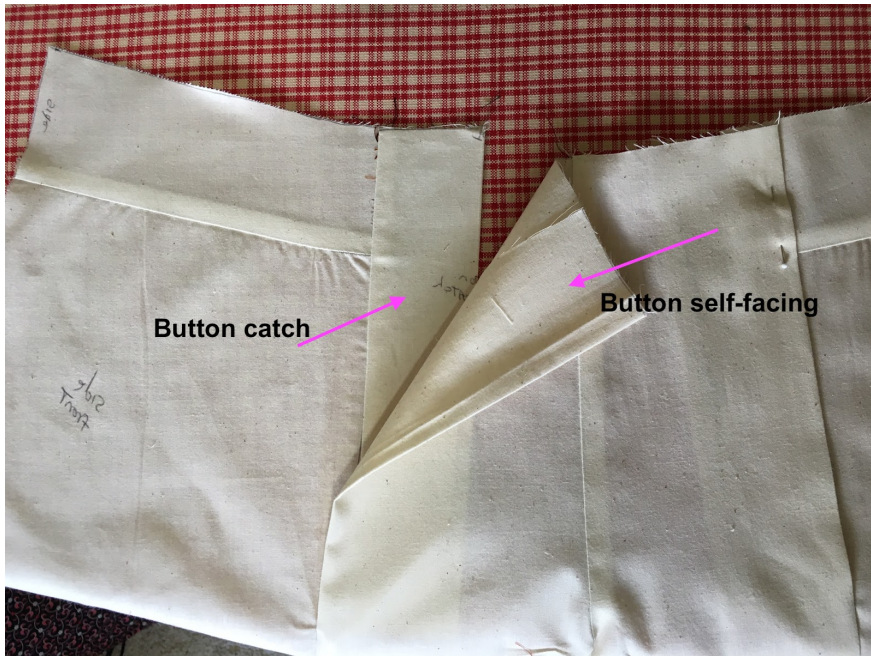
6. Right front: Serge or finish the extended edges on right side front and right center front button self-facing. Press button self-facing onto wrong side.

Finish or serge bottom edge of button catch. Press the button catch in half, wrong sides together. Pin the catch right sides together along right front side, (along extended edge and waistband). Press seam allowance toward the button catch.

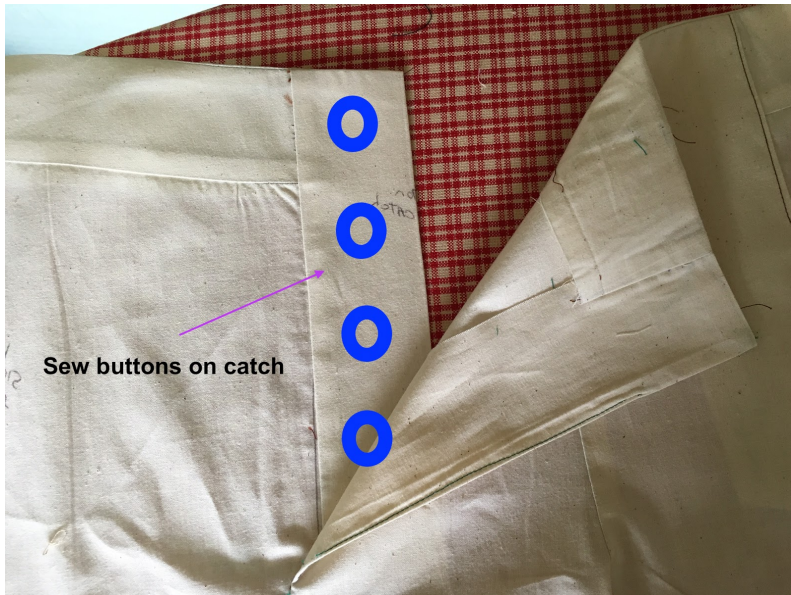


7. Sew center front seam. Sew side seams. Finish seam allowances as desired. Sew inside leg seams. Finish seam allowances as desired.

8. Sew inner left and right facings to back facing, finish or serge outer edge. Pin the facing on pants upper edge, right sides together. Fold the button self-facing onto the right side and stitch the right facing's short edge to it. Sew the facing to the pants. Turn the facing right side out and press it. Topstitch as desired.



9. Finish or serge hem allowances, press onto wrong side, then topstitch as desired.
10. Make buttonholes on right center. Topstitch on front over buttonhole self-facing (making a fly front design as on jeans). Sew buttons under buttonholes of left, and sew buttons onto button catch on right.



TECHNICAL DRAWING:

