

Sewing Pattern — Dress 4251

Recommendations on fabric: natural or mixed fabric with elastane suitable for dresses; companion fabric.

You will also need: fusing; blind zipper, 2 buttons.

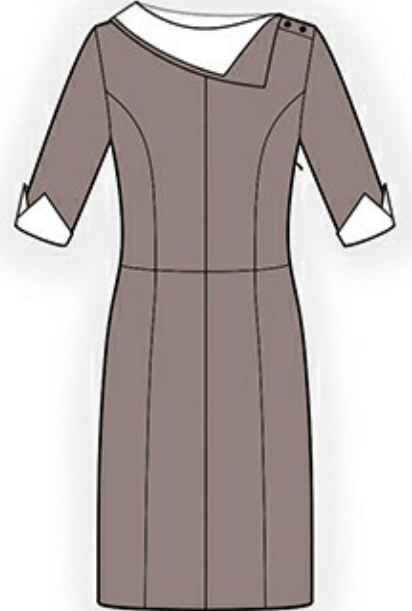
If the pattern has double contour the seam allowances are included.

Seam allowances are NOT included by default and need to be added when laying out and cutting details if your pattern has single contour.

Seam allowance: hem – 2 cm, all other seams – 1 cm.

Attention! First of all please print all the paper patterns and lay them out at the width of fabric you plan to use (usually from 90 to 150 cm) to see how much fabric you will need. Don't forget to count pair parts and symmetrical parts.

When sewing the garment, pay attention to notches, they must coincide.



CUTTING:

Fabric:

1. Left upper part of the back - 1 detail
2. Right upper part of the front - 1 detail
3. Side upper part of the back — 2 details
4. Lower central part of the back — 2 details
5. Lower side part of the back — 2 details
6. Side upper part of the front — 2 details
7. Right upper part of the front — 1 details
8. Left upper part of the front — 1 details
9. Side lower part of the front — 2 details
10. Central lower part of the front — 2 details
11. Sleeve — 2 details
12. Lower collar -2 details

Companion fabric:

1. Cuff - 4 details
2. Upper collar — 2 details

INSTRUCTIONS:

1. Sew princess edges of the front and of the back on upper parts. Serge and press the seam towards center. Sew center edge of the back. Serge seam allowance and press it apart. Sew center edge of the front. Serge and press seam allowance apart. Serge and sew and press apart right side edge.
2. Sew princess edges of the front and of the back on lower parts. Serge and press the seam towards center. Serge central edges of the back. Sew center edge from the top up to slit marker. Sew center edge of the front. Serge and press seam allowance apart.
4. Stitch lower parts to upper ones. Serge and press seam allowances apart.
3. Serge left side edges. Sew left side edge from hem up to the zipper notch and section under the armhole. Press apart the seam. Sew in zipper.
5. Sew right shoulder edge. Serge and press seam allowances apart. Apply fusing to seam allowances of the closure. Serge edges. Turn seam allowance of the closure of the front inside and topstitch onto the front. Turn seam allowance of the closure of the back inside and topstitch onto the back.
6. Fold upper collars right sides together and overstitch along ends and outer edge. Start and finish the stitch exactly near beginning of collar. Slash corners, turn onto right side and press. Overstitch lower collar the same way.
7. Put upper collar onto lower one and fix with temporary stitch at 2 cm off connecting line. Sew collars into the neckline: lower collar and lower layer of upper collar. Press seam allowances towards side of collar. Turn seam allowance of upper collar inside and topstitch into connecting seam of lower layers. Remove temporary stitch.
8. Sew sleeve seam. Serge and press onto the back. Fold cuffs right sides together and overstitch along top shaped edge. Fold cuff into ring, leveling notches. Align cuff to the sleeve and stitch, directing seam allowance downwards. Serge seam allowance. Turn cuff downwards, turn seam allowance upwards and topstitch onto the sleeve. Turn cuff upwards. Sew sleeve into armhole, leveling notches.
9. Serge buttonholes and sew buttons on the closure.
10. Serge hem of the garment, press onto wrong side and topstitch.

TECHNICAL DRAWING:

