

Sewing Pattern — Jacket 4301

Recommendations on fabric: natural or mixed thin costume fabrics with elastane

You will also need: fusing, 2 decorative buttons of 2 cm in diameter, 1 button for inner closure.

If the pattern has double contour the seam allowances are included.

If the pattern has single contour, the seam allowances are NOT included and need to be added when laying out and cutting details.

SEAM ALLOWANCE: all seams – 1cm.

Attention! First of all please print all the paper patterns and lay them out at the width of fabric you plan to use (usually from 90 to 150 cm) to see how much fabric you will need. Don't forget to count pair parts and symmetrical parts.

When sewing the garment, pay attention to notches, they must coincide.

CUTTING:

Fabric:

1. Upper back part - 2 details
2. Lower back part - 1 detail
3. Back part inset – 1 detail
4. Upper front part - 2 details
5. Lower front part - 2 details
6. Front part inset - 2 details

Lining:

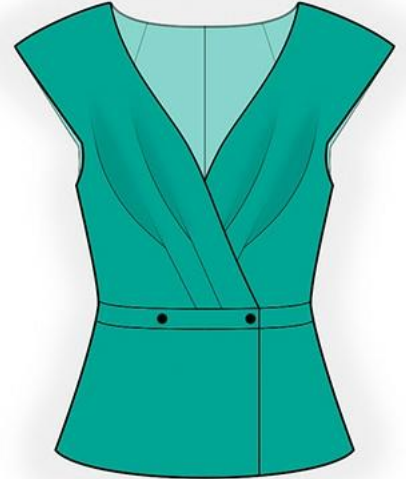
1. Upper back part - 2 details
2. Lower back part - 1 detail
3. Back part inset – 1 detail
4. Upper front part - 2 details
5. Lower front part - 2 details
6. Front part inset - 2 details

Use main fabric pattern pieces to cut lining details.

Use main fabric as lining.

Fusing:

1. Front part inset – 2 details



INSTRUCTIONS:

1. Apply fusing to details.
2. Sew darts on upper back part. Press darts towards center of back part. Sew center seam of back part. Press the seam.
3. Stitch back part inset to back part. Stitch lower back part to the inset. Press seams to the inset.
4. Press darts on upper front part according to markers. The depth of darts is directed to side seam. Sew darts only up to cross notch.
5. Stitch inset to upper front part. Stitch lower front part to the inset. Press seams to the inset.
6. Sew shoulder and side edges of back part and of front part. Press seams to back part.
7. Sew details of lining the same way as main fabric details, leaving a slit in left side seam for turning out.
8. Overstitch the neckline, front band and hem with lining. Slash seams on rounded parts. Turn details out and press. Overstitch armhole in two steps: first top part, and then lower part. Slash seams on rounded parts. Turn details out and press. Sew the slit. Put fixing stitch along inset and upper/lower parts connecting seam.
9. Make buttonhole on both front parts according to marking. Sew decorative button on left front part. On right front part sew: from the right side – decorative button, and from the wrong side – inner button.

TECHNICAL DRAWING:

