

## Skirt With Buttons - Sewing Pattern #2846

Recommendations on fabric: natural/mixed fabric suitable for dresses.

You will also need: fusible interfacing, 9 buttons.

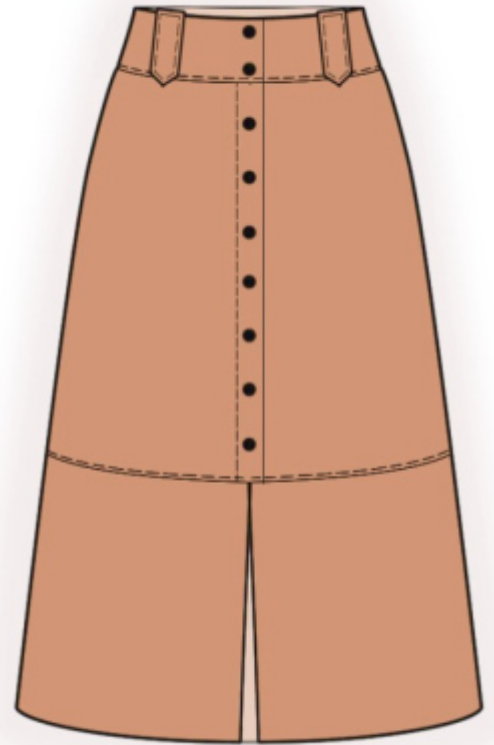
Seam allowances: all seams 1 cm. Seam allowance for hem - 2 cm.  
Seam allowance of the center edge of the lower front skirt - 2 cm.  
Seam allowance of the upper edge of the back pocket - 2 cm.

### Note on seam allowances:

- If the pattern has double contour the seam allowances are included. They are 1 cm unless specified otherwise.
- If the pattern has single contour, the seam allowances are NOT included and need to be added when laying out the pattern.

### Note on length of fabric:

Attention! The amount of fabric needed for your pattern is not included. It will depend on the selected pattern size, the width, and design of the fabric you plan to use. First, print all the paper patterns and lay them out at the width of fabric you plan to use (usually from 90 to 150 cm). Measure how much fabric you will need. Don't forget to account for pieces that need to be cut multiple times and pieces that are cut on the fold.



## CUTTING:

### Note on cutting:

On the pattern pieces, "beam" means straight of grain. Lay out your pieces accordingly. Some pieces will be cut on the fold. This is noted on the pattern piece. Mark all notches and other design features such as pleats etc. from the pattern onto your fabric.

When sewing the garment, pay attention to notches, they must match up.

Main fabric:

1. Back - cut 2
2. Front skirt - cut 2
3. Lower Front Skirt - cut 2
4. Back facing - cut 2
5. Front facing - cut 4
6. Belt Loop - cut 4

7. Back pocket – cut 2

Fusible interfacing:

1. Back facing – cut 1
2. Front facing - cut 2

**INSTRUCTIONS:**

1. Apply fusible interfacing.
2. Sew the center back seam, press towards left, serge. Sew a decorative stitch at 0.5 cm from seam. Sew the outer back facing to the back skirt, press seam allowances towards top.
3. Fold under the upper seam allowance of back pocket onto the wrong side and press, turn under inside and topstitch. Serge pocket edges, press seam allowances onto wrong side. Pin pockets according to markings at back and topstitch.
4. Finish the edge of the seamless front skirt placket, press onto wrong side according to marked line center front facings and topstitch along the marked line. Place the right skirt on the left, aligning along the center line, and baste together.
5. Sew the front facing to the skirt (the facing is longer than the front skirt by the width of the seam allowance), press the seam allowances towards the facing.
6. Finish the seam allowance of the center edge of the lower front skirt, press onto wrong side and topstitch. Join the lower skirt to the front skirt, placing the lower skirt pieces edge to edge, press seam allowances towards top and serge. Sew a decorative stitch at 0.5 cm from seam.
7. Sew side seams, press towards the back and serge.
8. Fold the belt loop piece lengthwise right sides together, stitch around the edges, leaving the upper short edge open. Turn the belt loop right side out, straighten, press and sew a decorative stitch around all edges.
9. Sew the side seams of the inner facings, press the seam apart, serge lower edge. Place the facing and the skirt right sides together, stitch along the upper edge and the vertical edges of the front facings, inserting the belt loops according to the markings. Clip seam allowances, turn the facing onto the wrong side and press. Stitch-in-the-ditch into the seam of outer facing. Topstitch the lower end of the belt loop onto the facing.
10. Serge lower edge of garment, press onto wrong side and topstitch.
11. Make buttonholes on the right front skirt, sew buttons on the left front skirt.

**TECHNICAL DRAWING:**

