

Waistcoat With Longer Front - Sewing Pattern #2823

Recommendations on fabric: natural/mixed suiting fabrics.

You will also need: fusible interfacing; lining; 1 inner button.

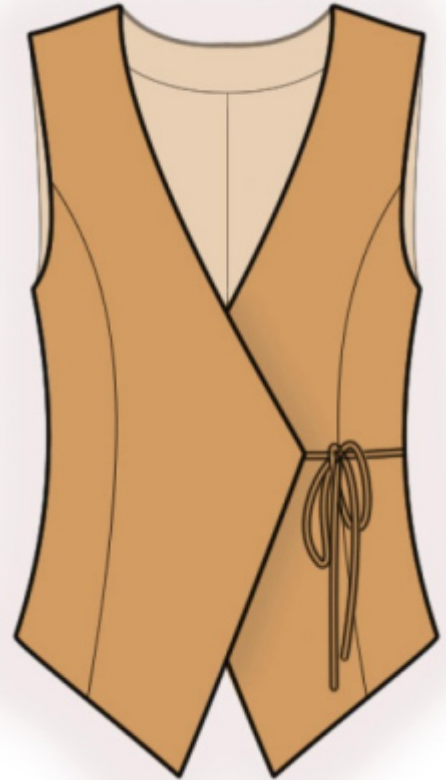
Seam allowances: all seams 1 cm. Seam allowance for hem of garment - 2.5 cm.

Note on seam allowances:

- If the pattern has double contour the seam allowances are included. They are 1 cm unless specified otherwise.
- If the pattern has single contour, the seam allowances are NOT included and need to be added when laying out the pattern.

Note on length of fabric:

Attention! The amount of fabric needed for your pattern is not included. It will depend on the selected pattern size, the width, and design of the fabric you plan to use. First, print all the paper patterns and lay them out at the width of fabric you plan to use (usually from 90 to 150 cm). Measure how much fabric you will need. Don't forget to account for pieces that need to be cut multiple times and pieces that are cut on the fold.



CUTTING:

Note on cutting:

On the pattern pieces, "beam" means straight of grain. Lay out your pieces accordingly. Some pieces will be cut on the fold. This is noted on the pattern piece. Mark all notches and other design features such as pleats etc. from the pattern onto your fabric.

When sewing the garment, pay attention to notches, they must match up.

Main fabric:

1. Center back - cut 2
2. Side back - cut 2
3. Center front - cut 2
4. Side front - cut 2
5. Center front facing - cut 2
6. Back neck facing - cut 1

Attention: lining for front and back is cut using the pattern blocks for main fabric except for the width of the center front facing and back neckline facing.

Lining:

1. Center back - cut 2
2. Side back - cut 2
3. Center front - cut 2
4. Side front - cut 2

Fusible interfacing:

1. Center front - cut 2
2. Center front facing - cut 2
3. Back neck facing - cut 1

INSTRUCTIONS:

1. Apply fusible interfacing.
2. Sew the center back seam, press the seam apart. Sew side backs to center back. Press towards center.
3. Cut two straps of fabric on bias for ties, they should be 2.5 cm wide and 50 cm long. Fold tape in half lengthwise right sides together and stitch at 0.3 cm from fold. Cut away seam allowances close to seam, turn tape right side out and straighten the rolled piece. Cut in two.
4. Sew side front to center front, inserting the tie band into the right princess seam. Press towards center.
5. Sew shoulder and side seams. Press the seam apart.
6. Sew side seams of back neckline facing and central front facings, press seam apart.
7. Pin center front facings onto the main piece right sides together, pin together and sew center front facings and neckline. Insert the second tie into the left center front seam. Clip seam allowances, fold the center front facings and the facing onto the wrong side and press.
8. Fold inside the lower edge of the vest and press.
9. Sew seams on lining, leaving an opening in left side seam. Sew lining to the central front facings and to facing. Sew lining to armhole in two steps: first sew the front armhole, then sew the back armhole. Clip seam allowances, turn right side out and press. Sew lining to lower edge of vest.
10. Turn the vest right side out through the technical opening. Sew the opening closed.
11. Make the inner button hole. Sew on inner button.

TECHNICAL DRAWING:

