

Dress With Belt With Buttons - Sewing Pattern #2819

Recommendations on fabric: natural/mixed fabrics with elastane suitable for dresses.

You will also need: fusible interfacing; dress zipper; 2 buttons.

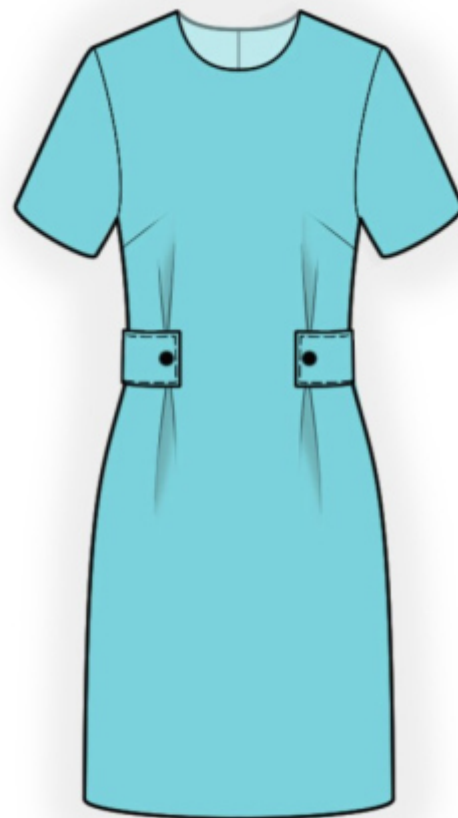
Seam allowances: all seams 1 cm. Seam allowance along lower edge of garment and lower edge of sleeve - 2 cm.

Note on seam allowances:

- If the pattern has double contour the seam allowances are included. They are 1 cm unless specified otherwise.
- If the pattern has single contour, the seam allowances are NOT included and need to be added when laying out the pattern.

Note on length of fabric:

Attention! The amount of fabric needed for your pattern is not included. It will depend on the selected pattern size, the width, and design of the fabric you plan to use. First, print all the paper patterns and lay them out at the width of fabric you plan to use (usually from 90 to 150 cm). Measure how much fabric you will need. Don't forget to account for pieces that need to be cut multiple times and pieces that are cut on the fold.



CUTTING:

Note on cutting:

On the pattern pieces, "beam" means straight of grain. Lay out your pieces accordingly. Some pieces will be cut on the fold. This is noted on the pattern piece. Mark all notches and other design features such as pleats etc. from the pattern onto your fabric.

When sewing the garment, pay attention to notches, they must match up.

Main fabric:

1. Back - cut 2
2. Front - cut 1 on fold
3. Sleeve - cut 2
4. Belt - cut 2 on fold
5. Front neck facing - cut 1
6. Back neck facing - cut 2

Fusible interfacing:

1. Front neck facing - cut 1
2. Back neck facing - cut 2
3. Belt - cut 1

INSTRUCTIONS:

1. Apply fusible interfacing.
2. Sew the tucks on the backs. Serge the center back edges separately. Sew center back seam from notch for zipper to bottom. Press the seam apart. Sew in zipper.
3. Sew front darts on front. Press bulk of bust darts towards top. Sew the tucks on fronts.
4. Sew side and shoulder seams. Press seams towards back and serge.
5. Sew shoulder seams of neckline facings, press the seam apart. Serge the outer edge. Pin facings to garment right sides together and sew the neckline. Clip seam allowances, fold facings onto wrong side, straighten, press. Slipstitch facing to garment along the shoulder seam and the zipper tape.
6. Sew sleeve seams. Serge the seam allowances and press towards back. Sew sleeves into armholes. Serge and press.
7. Serge hem of garment and lower edge of sleeve. Press onto wrong side and topstitch.
8. Pin waistbands together, right sides together and sew around all edges, leaving an opening for turning. Trim away corners, turn belt right side out and press. Sew the opening closed. Sew a decorative stitch around all edges of belt. Make buttonholes on belt.
9. Sew on buttons onto front.

TECHNICAL DRAWING:

