

Dress With Flared Skirt - Sewing Pattern #2779

Recommendations on fabric: natural/mixed fabric suitable for dresses.

You will also need: fusible interfacing; dress zipper.

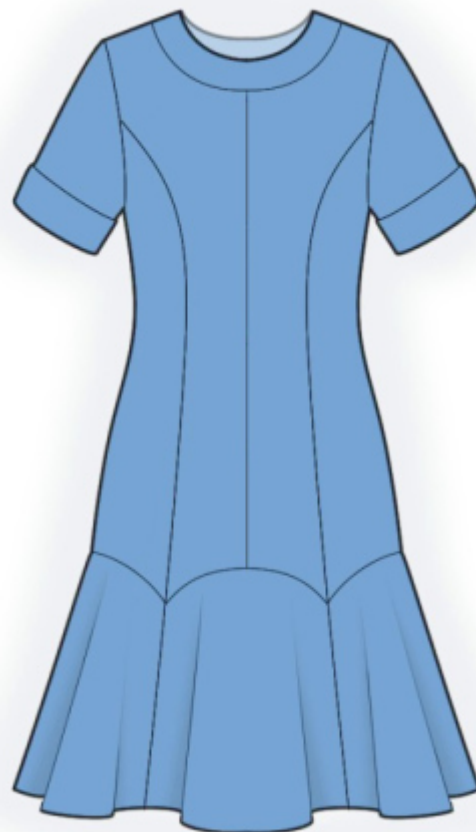
Seam allowances: all seams 1 cm; seam allowance for hem of garment - 2 cm.

Note on seam allowances:

- If the pattern has double contour the seam allowances are included. They are 1 cm unless specified otherwise.
- If the pattern has single contour, the seam allowances are NOT included and need to be added when laying out the pattern.

Note on length of fabric:

Attention! The amount of fabric needed for your pattern is not included. It will depend on the selected pattern size, the width, and design of the fabric you plan to use. First, print all the paper patterns and lay them out at the width of fabric you plan to use (usually from 90 to 150 cm). Measure how much fabric you will need. Don't forget to account for pieces that need to be cut multiple times and pieces that are cut on the fold.



CUTTING:

Note on cutting:

On the pattern pieces, "beam" means straight of grain. Lay out your pieces accordingly. Some pieces will be cut on the fold. This is noted on the pattern piece. Mark all notches and other design features such as pleats etc. from the pattern onto your fabric.

When sewing the garment, pay attention to notches, they must match up.

Main fabric:

1. Center back - cut 2
2. Side back - cut 2
3. Lower center back - cut 1
4. Center front - cut 2
5. Side front - cut 2
6. Lower center front - cut 1
7. Lower side part - cut 2

8. Sleeve - cut 2
9. Back neck facing - cut 4
10. Front neck facing - cut 2
11. Cuff - cut 2

Fusible interfacing:

1. Back neck facing - cut 2
2. Front neck facing - cut 1
3. Cuff - cut 2

INSTRUCTIONS:

1. Apply fusible interfacing.
2. Serge center back edges separately on each piece. Sew outer part of back neckline facing to back. Press towards facings. Sew center back seam from marking for zipper to lower edge, press the seam apart. Sew in zipper. Sew lower back to garment, serge and press towards bottom.
3. Sew center front seam. Serge the seam allowances and press towards left. Sew lower front, serge and press towards bottom. Sew the outer facing into the front neckline. Clip seam allowances and press towards facing.
4. Sew side seams, press towards the back and serge. Sew lower fronts to upper fronts and sew lower backs to upper backs, serge seams and press towards top.
5. Sew side backs to center back. Sew side fronts to center front, press seam allowances towards center, serge.
6. Sew shoulder seams. Serge seams and press towards back.
7. Sew shoulder seams on inner facings. Press the seam apart. Serge the outer edge. Pin facing on garment, right sides together and sew the neckline opening. Clip seam allowances, fold facings onto wrong side and press. Pin the seam allowance of inner facing to the seam of outer facing and stitch-in-the-ditch .
8. Sew sleeve seam, press towards back and serge. Sew cuff into a ring. Press the seam apart. Fold cuff in half lengthwise right side out and press. Sew cuff to lower edge of sleeve from the right side. Serge. Fold the cuff onto the sleeve and press. Sew sleeves into armholes, serge and press.
9. Serge bottom edge of dress, press onto wrong side and topstitch.

TECHNICAL DRAWING:

