

## Two-Layer Vest-Blouse - Sewing Pattern #2695

Recommendations on fabric: natural/mixed fabrics suitable for blouses.

You will also need: fusible interfacing; button.

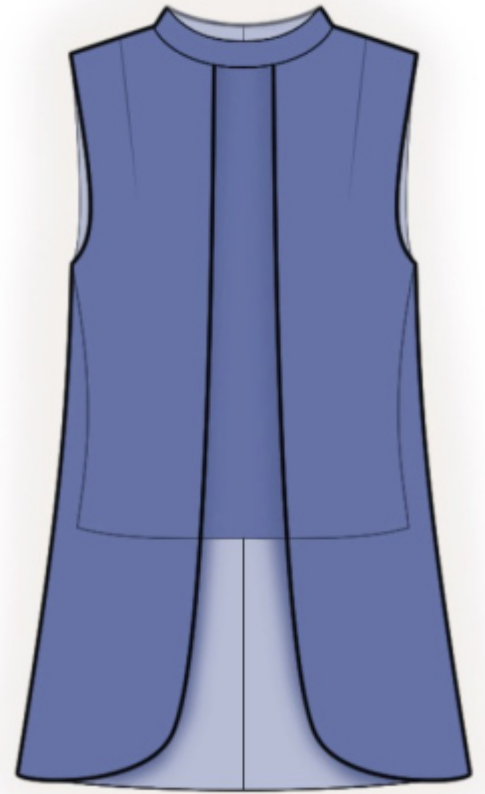
Seam allowances: all seams 1 cm; seam allowance for the hem of inner pieces - 2 cm.

### Note on seam allowances:

- If the pattern has double contour the seam allowances are included. They are 1 cm unless specified otherwise.
- If the pattern has single contour, the seam allowances are NOT included and need to be added when laying out the pattern.

### Note on length of fabric:

Attention! The amount of fabric needed for your pattern is not included. It will depend on the selected pattern size, the width, and design of the fabric you plan to use. First, print all the paper patterns and lay them out at the width of fabric you plan to use (usually from 90 to 150 cm). Measure how much fabric you will need. Don't forget to account for pieces that need to be cut multiple times and pieces that are cut on the fold.



## CUTTING:

### Note on cutting:

On the pattern pieces, "beam" means straight of grain. Lay out your pieces accordingly. Some pieces will be cut on the fold. This is noted on the pattern piece. Mark all notches and other design features such as pleats etc. from the pattern onto your fabric.

When sewing the garment, pay attention to notches, they must match up.

Main fabric:

1. Outer back - cut 2
2. Inner back - cut 2
3. Outer front - cut 2

4. Inner front - cut 1 on fold

5. Neckline facing - cut 2

Fusible interfacing:

1. Neckline facing - cut 1

## INSTRUCTIONS:

1. Apply fusible interfacing.

2. Sew darts on inner back, press bulk towards center. Serge the center back edges separately. Sew center edge from the marking for slit down to the lower edge. Press the seam allowances apart. Sew a fastening stitch along the slit at 0.2 cm.

3. Serge the central edges of the outer back separately. Sew center edge from the marking for slit down to the lower edge. Press the seam allowances apart. Sew a fastening stitch along the slit at 0.2 cm.

4. Sew darts on inner front, trim away the bulk with a serger and press towards the center.

5. Sew the shoulder edges and the side edges on the inner pieces of the blouse. Serge seams and press towards back. Serge bottom edge of garment, press onto wrong side and topstitch.

6. Sew the shoulder edges and the side edges on the outer pieces of the blouse. Serge seams and press towards back. Serge the center edge and the lower edge of the outer pieces of the blouse, fold under, press, and topstitch. You may also finish the edge with a bias tape, in this case trim away the seam allowance.

7. Pin the outer part onto the inner part, baste together along the neckline edge and the armhole edges.

8. Cut or use ready-made bias tape, its width should equal 4 cm and length should equal the length of armhole + 4 cm. Fold bias tape in half lengthwise right side out and press. Pin the bias tape to the edge of the right armhole from the right side and sew, fold bias tape onto wrong side and topstitch onto main piece along the seam.

9. Cut (or take ready) bias tape, its width should equal 2.5 cm and its length should equal 10 cm for loop buttonhole. Fold tape in half lengthwise right sides together and stitch at 0.3 cm from fold. Cut away seam allowances close to seam, turn tape right side out and straighten the rolled piece. Adjust length of the loop.

10. Pin neckline facings together, right sides together and sew the upper edge and the corners, inserting the loop buttonhole. Trim away corners, turn facing right side out, straighten, press. Sew the outer edge of the neckline facing into neckline, fold under the seam allowance of the inner side and stitch-in-the-ditch along seam of outer side.

11. Sew on a button.

**TECHNICAL DRAWING:**

