

Dress With Pleated Sleeves - Sewing Pattern #2687

Recommendations on fabric: natural/mixed fabric suitable for dresses.

You will also need: fusible interfacing; 10 buttons.

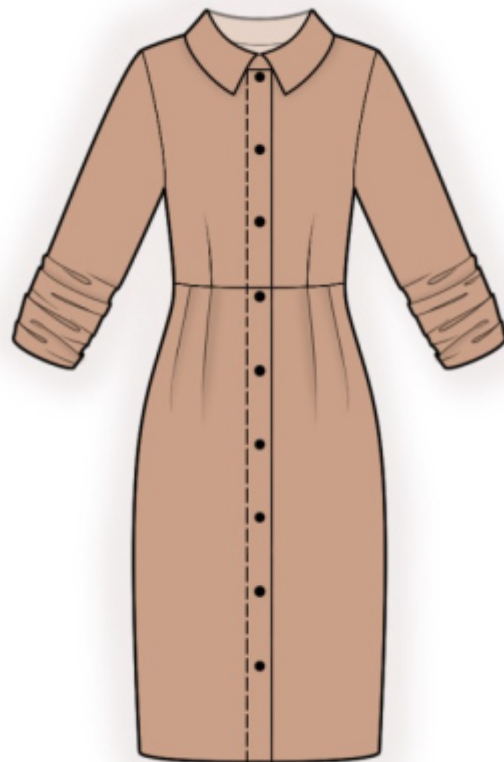
Seam allowances: all seam allowances - 1.0 cm, seam allowance along hem of garment - 3 cm.

Note on seam allowances:

- If the pattern has double contour the seam allowances are included. They are 1 cm unless specified otherwise.
- If the pattern has single contour, the seam allowances are NOT included and need to be added when laying out the pattern.

Note on length of fabric:

Attention! The amount of fabric needed for your pattern is not included. It will depend on the selected pattern size, the width, and design of the fabric you plan to use. First, print all the paper patterns and lay them out at the width of fabric you plan to use (usually from 90 to 150 cm). Measure how much fabric you will need. Don't forget to account for pieces that need to be cut multiple times and pieces that are cut on the fold.



CUTTING:

Note on cutting:

On the pattern pieces, "beam" means straight of grain. Lay out your pieces accordingly. Some pieces will be cut on the fold. This is noted on the pattern piece. Mark all notches and other design features such as pleats etc. from the pattern onto your fabric.

When sewing the garment, pay attention to notches, they must match up.

Main fabric:

1. Upper back - cut 2
2. Lower back - cut 2
3. Upper front - cut 2
4. Lower front - cut 2
5. Upper sleeve - cut 2
6. Lower sleeve - cut 2
7. Sleeve lining - cut 2

8. Center front facing - cut 2
9. Back neck facing - cut 1
10. Collar - cut 2
11. Stand collar - cut 2

Fusible interfacing:

1. Collar - cut 1
2. Center front facing - cut 2
3. Back neck facing - cut 1
4. Stand collar - cut 1

INSTRUCTIONS:

1. Apply fusible interfacing.
2. Sew darts on upper backs and lower backs. Press the bulk of the waist darts towards center. Sew lower back to upper back. Serge and press towards top.
3. Sew center back seam. Serge seam and press towards left.
4. Sew darts on upper fronts. Press bulk towards center. Make and baste pleats on lower front. Fold the bulk away from the center. Sew lower front to upper front. Serge and press towards top.
5. Sew shoulder and side seams, press seam allowances towards back and serge. Sew shoulder edges of centre front facings with shoulder edges of back neckline facing, press the seam apart. Serge the outer edge.
6. Pin upper collar to lower collar, right sides together, sew ends of collar and collar fall. Trim seam allowances, turn the collar right side out, straighten and press. Pin stand collars together, right sides together, put ready collar between them, adjust notches and sew, sewing ends of stand collar at the same time. Start and stop sewing exactly at the marked line of seam between stand collar and garment. Turn finished collar right side out and press. Sew the stand collar with the collar into the neckline.
7. Pin center front facings onto garment right sides together and sew center front edges, front neckline and back neckline (the collar is placed in between the pieces). Clip into curves, trim away corners, fold center front facings and neckline facing onto wrong side, straighten, press. Slip stitch it to the garment along the shoulder seams and along the center back seam. Sew a decorative stitch along the center front edge along the marked line.
8. Make pleats on the lower sleeve, fold bulk towards top. Sew sleeve seam. Sew the seam on lining. Pin the lower sleeve to the lining right sides together and sew lower edge. Turn right side out and press hem of sleeve. Baste the upper edge of the lower sleeve to the lining. Sew seam on upper sleeve. Serge and press towards back. Sew upper sleeve to lower sleeve. Serge and press towards top. Sew sleeve into armhole according to notches, seam allowance press and serge.

9. Seam allowance for hem serge, fold inside onto wrong side and topstitch.
10. Make buttonholes on the right front and on the stand collar. Sew on buttons according to button holes.

TECHNICAL DRAWING:

