

## Long Vest - Sewing Pattern #2690

Recommendations on fabric: natural/mixed suiting fabrics.  
You will also need: fusible interfacing; lining; 4 buttons.

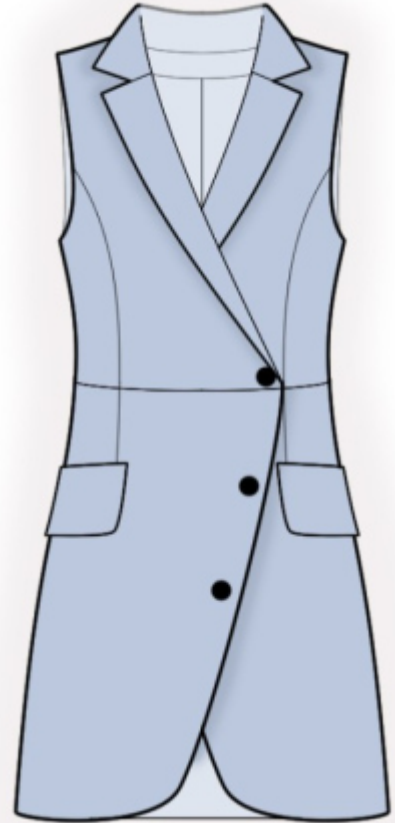
Seam allowances: all seams 1 cm. Seam allowance for the hem of lower back - 3 cm.

### Note on seam allowances:

- If the pattern has double contour the seam allowances are included. They are 1 cm unless specified otherwise.
- If the pattern has single contour, the seam allowances are NOT included and need to be added when laying out the pattern.

### Note on length of fabric:

Attention! The amount of fabric needed for your pattern is not included. It will depend on the selected pattern size, the width, and design of the fabric you plan to use. First, print all the paper patterns and lay them out at the width of fabric you plan to use (usually from 90 to 150 cm). Measure how much fabric you will need. Don't forget to account for pieces that need to be cut multiple times and pieces that are cut on the fold.



## CUTTING:

### Note on cutting:

On the pattern pieces, "beam" means straight of grain. Lay out your pieces accordingly. Some pieces will be cut on the fold. This is noted on the pattern piece. Mark all notches and other design features such as pleats etc. from the pattern onto your fabric.

When sewing the garment, pay attention to notches, they must match up.

Main fabric:

1. Center back - cut 2
2. Side back - cut 2
3. Center front - cut 2
4. Side front - cut 2
5. Lower back - cut 2
6. Lower front - cut 2
7. Collar - cut 2

8. Back neck facing – cut 1
9. Center front facing – cut 2
10. Flap – cut 4

Lining:

1. Center back – cut 2
2. Side back – cut 2
3. Center front – cut 2
4. Side front – cut 2
5. Lower back – cut 2
6. Lower front – cut 2

Attention! Front and back pieces from lining are cut using the sewing pattern pieces for the main fabric, with the exception for the areas of center front facing and back neckline facing.

Fusible interfacing:

1. Center front – cut 2
2. Lower front – cut 2
3. Center front facing — cut 2
4. Collar – cut 1
5. Back neck facing — cut 1
6. Flap – cut 2

## **INSTRUCTIONS:**

1. Apply fusible interfacing.
2. Sew princess seams on upper back, press towards center. Sew darts on lower backs, press bulk towards center. Sew upper back to lower back, press towards top. Sew center back seam, press the seam apart.
3. Sew princess seams on upper front, press towards center. Sew darts on lower fronts, press bulk towards center. Sew upper front to lower front, press towards top.
4. Pin flaps together, right sides together and sew along the lower edge and the side edges. Trim seam allowances, trim away corners, turn pieces right side out, straighten and press. Serge upper edge. Pin flap onto front according to markings (the lower edge of the flap is directed towards the shoulder edge) and sew. Fold flap down and press.
5. Sew shoulder edges of the garment, press the seam apart.
6. Pin upper collar to lower collar and sew the corners and the outer edge. Start and stop sewing exactly at the marked line of the seam between collar and garment. Trim away corners, snip into seam allowance near the mark. Turn the collar right side out, straighten and press.

7. Sew shoulder edges of center front facings and back neckline facing, press the seam apart.
8. Place center front facing onto front right sides together, pin together and sew along the center front edge and the lapel. Sew upwards up to the notch marking the end of collar seam. Trim away corners. Topstitch seam allowance along center front edge onto center front facing along the closure, and onto front along the part, which is folded away. Place stitch line at 0,2 cm from seam. Turn center front facings right side out, straighten seams.
9. Sew the lower collar into the neckline of the garment, sew upper collar into the neckline of the back neckline facing and of the center front facing. Press apart seam allowances of collars and baste together close to seam.
10. Sew the side edges of the garment, folding away the center front facing near the side seam on the front, press the seam apart.
11. Sew the seams and the darts on lining, leaving a technical opening in the left side seam. Sew lining to center front facings and to facings. Turn garment right side out. Sew armhole in two steps: first sew the front armhole, then sew the back armhole.
12. Mark the hem, fold inside and press on back. Sew lining to lower edge of garment. Sew the opening closed.
13. Make buttonholes on right front, sew on buttons on the left one. Make the upper buttonhole on the left front, sew on inner button on right front.

## **TECHNICAL DRAWING:**

