

Skirt With Wide Yoke - Sewing Pattern #2676

Recommendations on fabric: thin natural/mixed suiting fabrics.

You will also need: lining; fusible interfacing; 1 button; dress zipper; buckle; grommets.

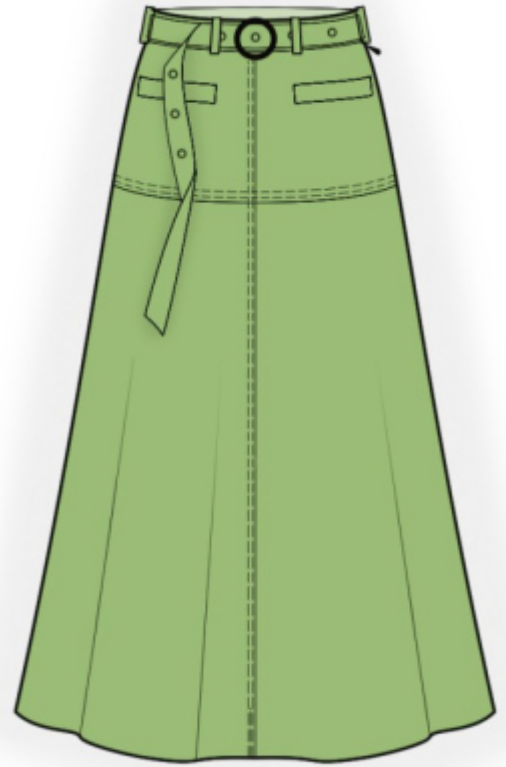
Seam allowances: all seams 1 cm. Seam allowance along the lower edges - 2 cm.

Note on seam allowances:

- If the pattern has double contour the seam allowances are included. They are 1 cm unless specified otherwise.
- If the pattern has single contour, the seam allowances are NOT included and need to be added when laying out the pattern.

Note on length of fabric:

Attention! The amount of fabric needed for your pattern is not included. It will depend on the selected pattern size, the width, and design of the fabric you plan to use. First, print all the paper patterns and lay them out at the width of fabric you plan to use (usually from 90 to 150 cm). Measure how much fabric you will need. Don't forget to account for pieces that need to be cut multiple times and pieces that are cut on the fold.



CUTTING:

Note on cutting:

On the pattern pieces, "beam" means straight of grain. Lay out your pieces accordingly. Some pieces will be cut on the fold. This is noted on the pattern piece. Mark all notches and other design features such as pleats etc. from the pattern onto your fabric.

When sewing the garment, pay attention to notches, they must match up.

Main fabric:

1. Back skirt yoke - cut 2
2. Back - cut 2
3. Front skirt yoke - cut 2
4. Front skirt - cut 2
5. Belt - cut 1
6. Pocket welt - cut 2
7. Decorative belt - cut 1 on fold

8. Belt Loop - cut 1

Lining:

1. Large pocket bag - cut 2
2. Small pocket bag - cut 2

Fusible interfacing:

1. Belt - cut 1
2. Pocket welt - cut 2
3. Decorative belt - cut 1 on fold

INSTRUCTIONS:

1. Apply fusible interfacing.

2. Sew yoke to back skirt, press seam allowances towards top, serge. Sew a double decorative stitch along the seam at 0.1 cm and 0.7 cm. Sew center seam of back skirt, press towards left and serge. Sew a double decorative stitch along the seam at 0.1 cm and 0.7 cm.

3. Mark the position of pockets on the front skirt yokes. Press welt in half lengthwise wrong sides together. Topstitch small pocket bag onto inner side of welt. Sew the pocket welt to the yoke along the lower line of the pocket marking. Sew the bigger pocket bag to the yoke along the upper line of the pocket marking. Stop stitching near short marking lines of the pocket. Slash through pocket opening. Snip diagonally toward end of stitching at 1-1.5 cm from end of pocket opening. Turn welt and large pocket bag onto wrong side through the resulting opening. Sew a double back stitch lines near corners to fix ends of pockets. Sew together edges of pocket bags, serge.

4. Sew front skirt to yoke, press seam allowances towards top, serge. Sew a double decorative stitch along the seam at 0.1 cm and 0.7 cm. Sew center seam on front skirt, press towards left and serge. Sew a double decorative stitch along the seam at 0.1 cm and 0.7 cm.

5. Left side edges serge separately. Sew left side seam from notch for zipper to hem. Press the seam apart. Sew in zipper. Sew right side seam, press towards the back and serge.

6. Fold belt loop in half lengthwise right sides together and sew along long side. Then turn right side out, straighten the seam, placing it on the fold, and press. Cut the belt loops, mark the placing of belt loops. Sew the belt loops to the upper edge of the skirt according to the markings and over the side seams.

7. Fold belt in half lengthwise, right sides together and sew the shorter side and the corner. Start stitching exactly at the marked line of seam between belt and skirt. Snip into seam allowances near mark, belt turn right side out and press. Sew outer edge of belt to upper edge, turn inner edge under and topstitch into seam of. Topstitch the belt loops onto the upper edge of the waistband.

8. Seam allowance for hem serge, press onto wrong side and topstitch.
9. Make buttonhole on belt. Sew on a button.
10. Fold the decorative belt in half lengthwise, right sides together and sew along longer and one shorter sides. Trim away corners, turn belt right side out and press. Serge the shorter side. Sew a decorative stitch around all edges at 0.1 cm and 0.7 cm from the edge. Attach the buckle to the belt end. Install grommets.

TECHNICAL DRAWING:

