

## Dress With Decorative Insets - Sewing Pattern #2679

Recommendations on fabric: natural/mixed fabric suitable for dresses.

You will also need: fusible interfacing; dress zipper.

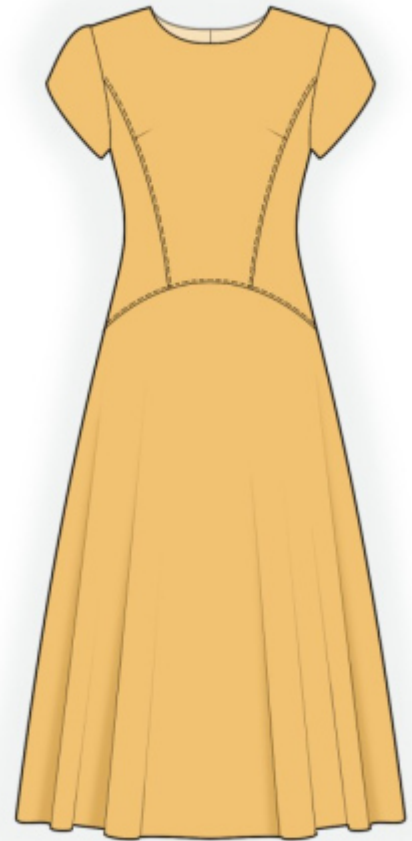
Seam allowances: all seams 1 cm; seam allowance for hem of dress — 2 cm.

### Note on seam allowances:

- If the pattern has double contour the seam allowances are included. They are 1 cm unless specified otherwise.
- If the pattern has single contour, the seam allowances are NOT included and need to be added when laying out the pattern.

### Note on length of fabric:

*Attention! The amount of fabric needed for your pattern is not included. It will depend on the selected pattern size, the width, and design of the fabric you plan to use. First, print all the paper patterns and lay them out at the width of fabric you plan to use (usually from 90 to 150 cm). Measure how much fabric you will need. Don't forget to account for pieces that need to be cut multiple times and pieces that are cut on the fold.*



## CUTTING:

### Note on cutting:

*On the pattern pieces, "beam" means straight of grain. Lay out your pieces accordingly. Some pieces will be cut on the fold. This is noted on the pattern piece. Mark all notches and other design features such as pleats etc. from the pattern onto your fabric.*

*When sewing the garment, pay attention to notches, they must match up.*

Main fabric:

1. Upper center back - cut 2
2. Upper side back - cut 2
3. Lower back — cut 2
4. Upper center front - cut 1 on fold
5. Upper side front - cut 2
6. Lower front - cut 1 on fold

7. Front neck facing — cut 1
8. Back neck facing — cut 2
9. Sleeve - cut 2

Fusible interfacing:

1. Front neck facing — cut 1
2. Back neck facing — cut 2

## **INSTRUCTIONS:**

1. Apply fusible interfacing.
2. Sew side backs to center back. Serge seams and press towards center. Sew a decorative stitch at 0.2 - 0.4 from seam. Sew upper back to lower back. Serge seams and press towards top. Sew a decorative stitch at 0.2 - 0.4 from seam. Serge center edges separately. Sew center back edges from notch for zipper to bottom. Press the seam apart. Sew in zipper.
3. Sew dart on front. Press bulk towards top. Sew side fronts to front. Serge seam and press towards center. Sew a decorative stitch at 0.2 - 0.4 from seam. Sew upper front to lower front. Serge seams and press towards top. Sew a decorative stitch at 0.2 - 0.4 from seam.
4. Sew shoulder and side seams, press towards the back and serge.
5. Sew the shoulder seams of the neckline facings, press the seam apart. Serge the outer edge. Pin facing to garment right sides together and sew the neckline. Clip into curves, turn pieces right side out, straighten, press. Slipstitch facing to garment along the shoulder seam and the zipper tape.
6. Sew sleeve seam, press towards the back and serge. Sew sleeves into armholes, serge and press.
7. Serge lower edge of garment and lower edge of sleeve, press onto wrong side and topstitch.

Tip: It is recommended to wear this dress with a belt

## **TECHNICAL DRAWING:**

