

Dress With Central Closure - Sewing Pattern #2655

Recommendations on fabric: natural/mixed fabric suitable for dresses.

You will also need: fusible interfacing; 11 buttons.

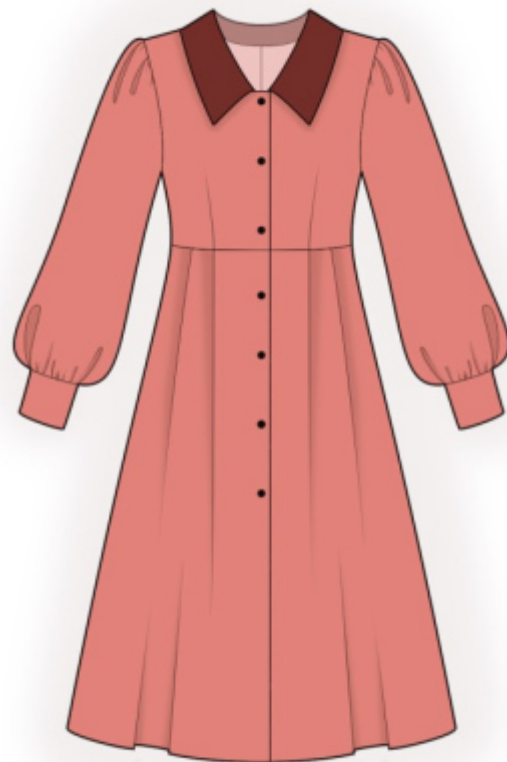
Seam allowances: all seam allowances - 1.0 cm, seam allowance along hem of garment - 3 cm.

Note on seam allowances:

- If the pattern has double contour the seam allowances are included. They are 1 cm unless specified otherwise.
- If the pattern has single contour, the seam allowances are NOT included and need to be added when laying out the pattern.

Note on length of fabric:

Attention! The amount of fabric needed for your pattern is not included. It will depend on the selected pattern size, the width, and design of the fabric you plan to use. First, print all the paper patterns and lay them out at the width of fabric you plan to use (usually from 90 to 150 cm). Measure how much fabric you will need. Don't forget to account for pieces that need to be cut multiple times and pieces that are cut on the fold.



CUTTING:

Note on cutting:

On the pattern pieces, "beam" means straight of grain. Lay out your pieces accordingly. Some pieces will be cut on the fold. This is noted on the pattern piece. Mark all notches and other design features such as pleats etc. from the pattern onto your fabric.

When sewing the garment, pay attention to notches, they must match up.

Main fabric:

1. Upper back - cut 2
2. Lower back - cut 2
3. Upper front - cut 2
4. Lower front - cut 2
5. Sleeve - cut 2
6. Cuff - cut 2
7. Center front facing - cut 2

8. Back neck facing – cut 1

Main fabric 2:

1. Collar – cut 2

Fusible interfacing:

1. Collar - cut 1

2. Center front facing – cut 2

3. Cuff – cut 2

4. Back neck facing – cut 1

INSTRUCTIONS:

1. Apply fusible interfacing.

2. Sew darts on back. Press the bulk of the waist darts towards center.

3. Make and baste a pleat on the lower back. The bulk is directed towards center. Sew lower back to upper back. Serge and press towards top.

4. Sew center back seam. Serge seam and press towards left.

5. Sew darts on front. Press the bulk of the waist darts towards center, press the bulk of the bust darts towards top. Make and baste pleats on lower front. Fold bulk towards center. Sew lower front to upper front. Serge and press towards top.

6. Sew shoulder seams, press seam allowances towards back and serge. Sew shoulder edges of centre front facings with shoulder edges of back neckline facing, press the seam apart. Serge the outer edge.

7. Pin the collars together, right sides together and sew collar ends and the outer edge of collar. Clip into curves, trim away corners. Turn the collars onto right side, straighten, press. Sew collar into neckline.

8. Sew side seams. Serge seams and press towards back.

9. Pin center front facings onto garment right sides together and sew center front edges, front neckline and back neckline (the collar is placed in between the pieces). Clip into curves, trim away corners, fold center front facings and neckline facing onto wrong side, straighten, press. Slip stitch it to the garment along the shoulder seams and along the center back seam.

10. Sew a gathering stitch along the sleeve cap and the lower edge of sleeve and gather fullness. Serge the sleeve edges separately. Sew the sleeve seam from the sleeve cap to the mark for the slit. Sew a fastening

stitch along the slit at 0.2 cm.

11. Fold cuffs in half lengthwise right sides together and sew side edges. Start and stop stitching exactly at the marked line of the cuff seam. Turn the piece right side out, straighten, press. Sew the outer part of the cuff to the sleeve, fold inside the inner side of the cuff, and topstitch into the seam of the outer cuff cuffs.

12. Make buttonholes on front and on cuffs. Sew on buttons according to button holes.

TECHNICAL DRAWING:

