

## Dress With Tucks - Sewing Pattern #2649

Recommendations on fabric: natural/mixed fabric suitable for dresses.

You will also need: fusible interfacing, 9 buttons.

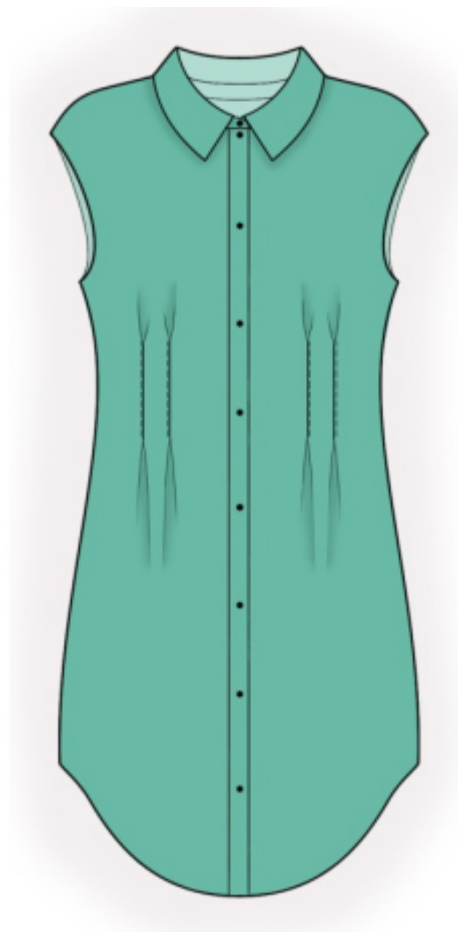
Seam allowances: all seams 1 cm. Seam allowance for hem of garment - 1.5 cm.

### Note on seam allowances:

- If the pattern has double contour the seam allowances are included. They are 1 cm unless specified otherwise.
- If the pattern has single contour, the seam allowances are NOT included and need to be added when laying out the pattern.

### Note on length of fabric:

*Attention! The amount of fabric needed for your pattern is not included. It will depend on the selected pattern size, the width, and design of the fabric you plan to use. First, print all the paper patterns and lay them out at the width of fabric you plan to use (usually from 90 to 150 cm). Measure how much fabric you will need. Don't forget to account for pieces that need to be cut multiple times and pieces that are cut on the fold.*



## CUTTING:

### Note on cutting:

*On the pattern pieces, "beam" means straight of grain. Lay out your pieces accordingly. Some pieces will be cut on the fold. This is noted on the pattern piece. Mark all notches and other design features such as pleats etc. from the pattern onto your fabric.*

*When sewing the garment, pay attention to notches, they must match up.*

Main fabric:

1. Back - cut 2
2. Front - cut 2
3. Front placket - cut 2
4. Collar - cut 2
5. Stand collar - cut 2

Fusible interfacing:

1. Collar - cut 1
2. Stand collar - cut 1
3. Front placket - cut 2

## **INSTRUCTIONS:**

1. Apply fusible interfacing.
2. Sew the tucks from the inner side of the back. Press the inner side of the pleats towards the side seams. Sew a decorative fixing stitch at 0.1-0.2 cm from the fold. Sew center edge. Press towards left and serge.
3. Sew the tucks from the inner side of the front piece. Press the inner side of the pleats towards the side seams. Sew a decorative fixing stitch at 0.1-0.2 cm from the fold.
4. Fold the front placket in half, wrong sides together, and iron. Sew inner side of placket to front, press seam allowances onto placket. Turn under the edge of outer placket and topstitch into the seam of inner placket. Sew a decorative stitch line at 0.1 cm from the center front edge.
5. Sew shoulder seams, press towards the back and serge.
6. Cut or use ready-made bias tape, its width should equal 4 cm and length should equal the length of armhole + 4 cm. Fold bias tape in half lengthwise right side out and press. Pin bias tape onto armhole edge from the right side and sew, fold bias tape onto wrong side and topstitch onto main piece along the seam. You may also finish the armhole with bias tape, in this case trim away the seam allowance.
7. Sew side seams, press towards the back and serge.
8. Pin collars together, right sides together, and sew the ends and the outer edge of collar. Trim away corners. Turn the collar right side out, straighten and press. Sew a decorative stitch at 0.1 cm from the edge. Pin stand collars together right sides together, insert the ready collar between them and sew, sewing the ends of stand collar at the same time. Start and stop sewing exactly at the marked line of seam between stand collar and garment. Turn finished collar right side out and press. Sew outer stand collar into neckline, fold inside open edge of internal stand collar and stitch in the ditch.
9. Serge lower edge of garment, press onto wrong side and topstitch.
10. Make buttonholes on the left front and left stand collar. Sew on buttons correspondingly.

## **TECHNICAL DRAWING:**

