

Dress With Pleats - Sewing Pattern #2644

Recommendations on fabric: natural/mixed fabric suitable for dresses.

You will also need: fusible interfacing; dress zipper.

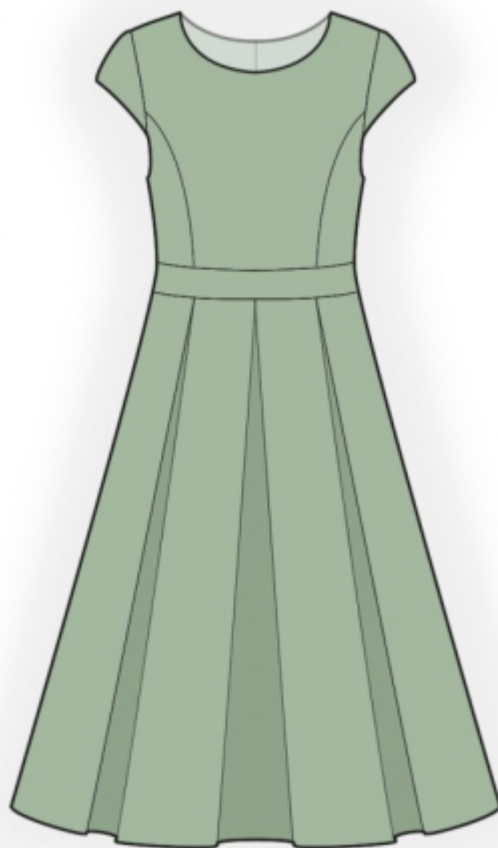
Seam allowances: all seams 1 cm; seam allowance for hem of dress and hem of sleeve — 1.5 cm.

Note on seam allowances:

- If the pattern has double contour the seam allowances are included. They are 1 cm unless specified otherwise.
- If the pattern has single contour, the seam allowances are NOT included and need to be added when laying out the pattern.

Note on length of fabric:

Attention! The amount of fabric needed for your pattern is not included. It will depend on the selected pattern size, the width, and design of the fabric you plan to use. First, print all the paper patterns and lay them out at the width of fabric you plan to use (usually from 90 to 150 cm). Measure how much fabric you will need. Don't forget to account for pieces that need to be cut multiple times and pieces that are cut on the fold.



CUTTING:

Note on cutting:

On the pattern pieces, "beam" means straight of grain. Lay out your pieces accordingly. Some pieces will be cut on the fold. This is noted on the pattern piece. Mark all notches and other design features such as pleats etc. from the pattern onto your fabric.

When sewing the garment, pay attention to notches, they must match up.

Main fabric:

1. Center back - cut 2
2. Side back - cut 2
3. Lower back - cut 2
4. Center front - cut 1 on fold
5. Side front - cut 2
6. Lower front - cut 1 on fold
7. Sleeve - cut 2

8. Belt — cut 1 on fold
9. Front neck facing — cut 1
10. Back neck facing — cut 2

Fusible interfacing:

1. Belt — cut 1 on fold
2. Front neck facing — cut 1
3. Back neck facing — cut 2

INSTRUCTIONS:

1. Apply fusible interfacing.
2. Sew princess seams on upper back, press towards center, serge. Make and baste box pleats on lower back. Sew upper back to lower back, press towards top and serge.
3. Sew princess seams on upper front, press towards center and serge. Make and baste box pleats on lower front. Sew upper front to lower front, press towards top and serge.
4. Sew side seams, press towards the back and serge.
5. Fold the longer edges of the waistband onto wrong side and press. Pin the waistband on top of the waist seam and topstitch.
6. Serge the center back edges separately. Sew the center back seam from zipper mark to hem, press the seam apart. Sew in zipper.
7. Sew shoulder seams, press towards the back and serge.
8. Sew the shoulder seams of the neckline facings, press the seam apart. Serge the outer edge. Pin facing to garment right sides together and sew the neckline. Clip into curves, turn pieces right side out, straighten, press. Slipstitch facing to garment along the shoulder seam and the zipper tape.
9. Serge lower edge of sleeve, fold inside the seam allowance and topstitch. Sew sleeves into armholes, serge and press.
10. Cut (or take ready) bias tape, its width should equal 4 cm and length should equal the length of lower armhole + 6 cm. Fold bias tape in half lengthwise right side out and press. Pin bias tape onto armhole edge from the right side, leaving loose ends, and sew. Fold bias tape onto wrong side, clip into seam allowances and topstitch onto main piece along the seam. Press seam.
11. Serge lower edge of garment, press onto wrong side and topstitch.

TECHNICAL DRAWING:

