

Sleeveless Dress - Sewing Pattern #2629

Recommendations on fabric: natural/mixed fabric suitable for dresses.

You will also need: fusible interfacing, 8 buttons.

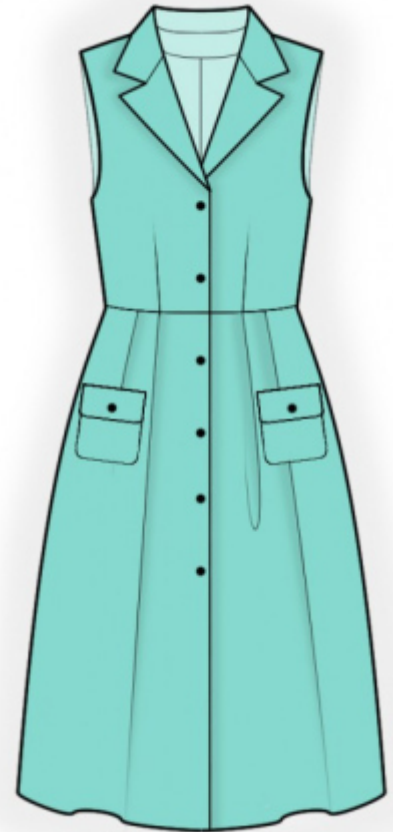
Seam allowances: seam allowance for hem of garment — 2.0 cm, the upper seam allowance of the pocket and of the pocket flap - 2 cm, other seams 1 cm.

Note on seam allowances:

- If the pattern has double contour the seam allowances are included. They are 1 cm unless specified otherwise.
- If the pattern has single contour, the seam allowances are NOT included and need to be added when laying out the pattern.

Note on length of fabric:

Attention! The amount of fabric needed for your pattern is not included. It will depend on the selected pattern size, the width, and design of the fabric you plan to use. First, print all the paper patterns and lay them out at the width of fabric you plan to use (usually from 90 to 150 cm). Measure how much fabric you will need. Don't forget to account for pieces that need to be cut multiple times and pieces that are cut on the fold.



CUTTING:

Note on cutting:

On the pattern pieces, "beam" means straight of grain. Lay out your pieces accordingly. Some pieces will be cut on the fold. This is noted on the pattern piece. Mark all notches and other design features such as pleats etc. from the pattern onto your fabric.

When sewing the garment, pay attention to notches, they must match up.

Main fabric:

1. Upper back - cut 2
2. Lower back — cut 2
3. Upper front — cut 2
4. Lower front — cut 2
5. Collar — cut 2
6. Center front facing — cut 2

7. Back neck facing – cut 1
8. Pocket - cut 2
9. Flap – cut 4

Fusible interfacing:

1. Collar — cut 1
2. Center front facing — cut 2
3. Back neck facing – cut 1
4. Flap – cut 2

INSTRUCTIONS:

1. Apply fusible interfacing.
2. Sew darts on upper back. Press bulk towards center.
3. Make and baste pleats on lower back (fold bulks from center). Sew upper back to lower back, press towards top and serge.
4. Sew center back seam. Serge the seam allowances and press towards left.
5. Sew darts on upper central front, trim bulk with serger and press towards the center.
6. Upper pocket edge two times fold inside at 1 cm inside and topstitch. Fold inside the side seam allowances and the lower seam allowances of the pocket and press. Pin pocket according to markings onto front and topstitch.
7. Pin flaps together, right sides together and sew along the side edges and along the lower edge. Trim seam allowances, turn right side out and press. Pin flap onto front (the lower edge of the flap is directed upwards) and topstitch flap. Fold flap down and sew a fixing stitch.
8. Make and baste pleats on lower front (fold bulks from center). Sew upper front to lower front, press towards top and serge.
9. Sew shoulder seams, press towards the back and serge.
10. Cut or use ready-made bias tape, its width should equal 4 cm and length should equal the length of armhole + 4 cm. Fold bias tape in half lengthwise right side out and press. Pin bias tape onto armhole edge from the right side and sew, fold bias tape onto wrong side and topstitch onto main piece along the seam.
11. Pin collars together, right sides together, and sew collar ends and collar fall. Trim away corners, snip into seam allowance near the mark. Turn the collar right side out, straighten and press.

12. Sew side seams, press towards the back and serge.
13. Sew side seams of back neckline facing and central front facings, press seam apart. Serge the outer edge.
14. Place central front facings onto front, right sides together, pin together and sew along the center front edge. Sew upwards up to the notch marking the end of collar seam. Trim away corners. Topstitch seam allowance along center front edge onto center front facing along the closure, and onto front along the part, which is folded away. Place stitch line at 0,2 cm from seam. Turn center front facings right side out, straighten seams.
15. Sew lower collar into neckline of the dress, sew upper collar into the neckline of back facing and center front facing. Snip into seam allowances of collar, press apart and slipstitch together close to the seam.
16. Serge the lower edge of garment, press onto wrong side and topstitch.
17. Make buttonholes on right front, sew on buttons onto left front. Sew buttons on flaps.

TECHNICAL DRAWING:

