

Skirt With A Deep Pleat - Sewing Pattern #2630

Recommendations on fabric: natural/mixed fabric suitable for dresses.

You will also need: fusible interfacing; dress zipper.

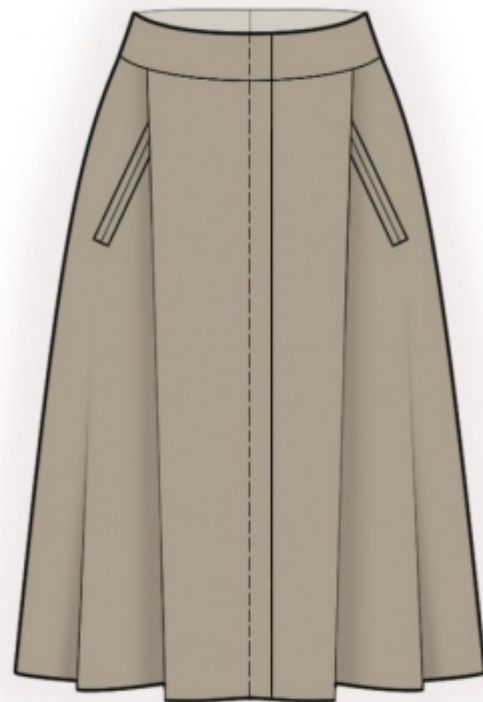
Seam allowances: all seams 1 cm. Seam allowance for hem of garment - 1.5 cm.

Note on seam allowances:

- If the pattern has double contour the seam allowances are included. They are 1 cm unless specified otherwise.
- If the pattern has single contour, the seam allowances are NOT included and need to be added when laying out the pattern.

Note on length of fabric:

Attention! The amount of fabric needed for your pattern is not included. It will depend on the selected pattern size, the width, and design of the fabric you plan to use. First, print all the paper patterns and lay them out at the width of fabric you plan to use (usually from 90 to 150 cm). Measure how much fabric you will need. Don't forget to account for pieces that need to be cut multiple times and pieces that are cut on the fold.



CUTTING:

Note on cutting:

On the pattern pieces, "beam" means straight of grain. Lay out your pieces accordingly. Some pieces will be cut on the fold. This is noted on the pattern piece. Mark all notches and other design features such as pleats etc. from the pattern onto your fabric.

When sewing the garment, pay attention to notches, they must match up.

Main fabric:

1. Back - cut 2
2. Front skirt - cut 1 on fold
3. Back yoke - cut 4
4. Outer front yoke - cut 1
5. Inner front yoke - cut 1
6. Facing - cut 4
7. Underlay piece - cut 2

Fusible interfacing:

1. Back yoke - cut 2
2. Inner front yoke - cut 1
3. Facing - cut 4

INSTRUCTIONS:

1. Apply fusible interfacing.
2. Sew back yoke to back skirt, press towards top. Serge center edges of the back skirt separately. Sew center seam from notch for zipper to hem. Press the seam apart. Sew in zipper.
3. Mark the position of pocket. Fold pocket facings in half wrong sides together and press. Make auxiliary lines on facings. Make auxiliary lines parallel to the pocket opening. Sew facings to front. Finish stitching at the guidance lines that you marked near pockets. Check your work on the wrong side (stitch lines should be parallel). Slash pocket opening on the side front. Snip diagonally toward end of stitching at 1-1.5 cm from end of pocket opening. Turn facings onto wrong side through the resulting opening, straighten edges. Sew a double back stitch lines near corners to fix ends of pockets. Serge the underlay piece around all edges. Pin the underlay on the facings from the wrong side and topstitch into seam of facings.
4. Make slanted pleats along the upper edge of the front skirt and baste them to prevent from shifting(the bulk is directed towards center). Sew the upper front yoke to the front skirt, press towards top. Fold the front skirt in half, right sides together and sew along the marked line. Unfold the skirt, and press the pleat towards left side.
5. Sew side seams, press towards the back and serge.
6. Sew side seams of inside yokes, press the seam apart. Serge lower edge. Pin yoke onto skirt right sides together and sew upper edge. Seam Allowances topstitch at yoke at 0.2 cm from the seam. Fold yoke onto the wrong side, press. Fold inside the middle edges and sew to zipper tape. Topstitch yoke into the seam of outer yoke (stitch-in-the-ditch).
7. Serge lower edge of skirt, press onto wrong side and topstitch.

TECHNICAL DRAWING:

