

Sewing Pattern — Dress 5972

Recommendations on fabric: low-stretch knit fabric

You will also need: lining, zipper

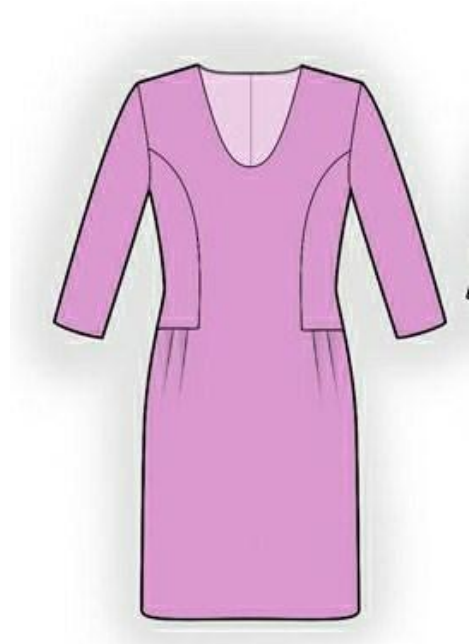
If the pattern has a double line around it, the seam allowances are included.

Note: By default, seam allowances are NOT included (single line) and will need to be added when laying out and cutting details.

Seam allowance: on hem and hem of sleeve – 2.0 cm, all other seams - 1 cm

Attention! First of all, please print all the paper patterns and lay them out at the width of fabric you plan to use (usually from 90 to 150 cm) to see how much fabric you will need. Don't forget to take into account pieces to be duplicated or cut on a fold.

When sewing the garment, pay attention to notches. They must match up with corresponding pieces.



CUTTING:

The word, “beam” used on some patterns means “straight of grain”. Some pieces will be cut on the fold, this is noted on the pattern piece. Mark all notches and other design features such as darts, pleats etc. from the pattern onto your fabric.

Darts: The fold of the dart is always pressed toward the center of your garment, or down toward the hem.

Fabric:

1. Back – 2 details
2. Side back – 2 details
3. Side front – 2 details
4. Front – 1 detail
5. Sleeve – 2 details

Lining:

1. Back – 2 details
2. Front – 1 detail

Advice:

Knit fabric pieces are sewn together with special stretch-stitch or narrow zig-zag stitch. Seam allowance on hem is stitched with twin needles to save stretchiness. Pieces can also be sewn together with 3 or 4 – thread serger. When serging, cut seam allowances to 0.6 – 0.8 cm.

INSTRUCTIONS:

1. Sew darts on back, press them toward center. Make and fasten pleats on front. Pleats are directed toward center of front.
2. Serge middle edge of back. Sew middle edge of back from zipper mark down to hem. Press apart the seam, pressing the slit. Sew in zipper.
3. Sew shoulder seams of back and front. Press apart the seam. Sew shoulder seams of lining back and front, press seam allowances apart. Serge lower edges of lining back and front and middle edge of back.
4. Place lining and main garment right sides together and stitch neckline edge. Clip seam allowances on curves. Turn right side out, press. Fasten lining and main garment on side front and front connection seams and on armholes. Turn under middle edge of lining back part and fix to zipper tape.
5. Sew side fronts to front, trim front in corner and sew undercut. Press seam allowances to side edge, on undercut — upwards. Serge seam allowances. Sew side backs to back, trim back in corner and sew undercut. Press seam allowances to side edge, on undercut — upwards. Serge seam allowances.
6. Sew side seams of back and front. Press seam allowances toward back and serge.
7. Sew sleeve seams. Press and serge seam allowances.
8. Sew sleeve into armhole, matching notches. Press and serge seam allowances.
9. Serge hem of garment and lower edge of sleeve. Turn to wrong side, press and topstitch.

TECHNICAL DRAWING:

