

## Dress With Pleats On Front Bodice - Sewing Pattern #2625

Recommendations on fabric: natural/mixed fabric suitable for dresses.

You will also need: fusible interfacing; dress zipper; elastic tape, its width should equal 1.5 cm; 2 buttons.

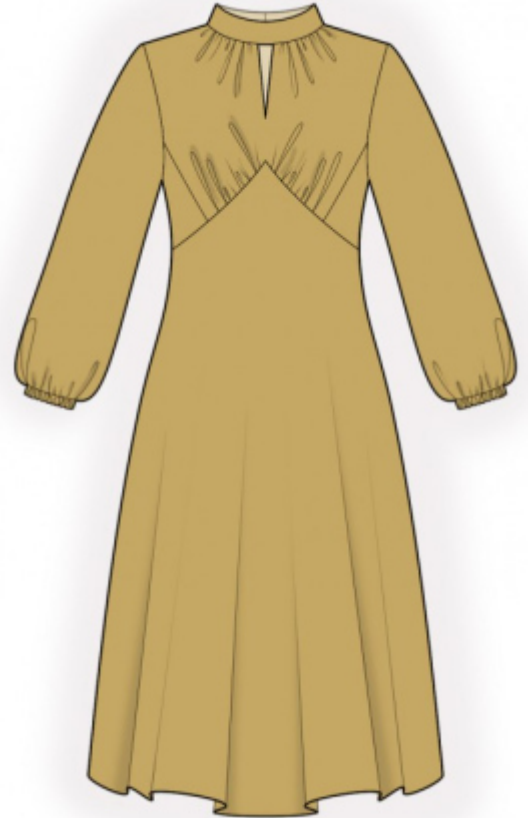
Seam allowances: all seams 1 cm; seam allowance for hem of garment - 2 cm; seam allowance on lower edge of sleeve - 4 cm.

### Note on seam allowances:

- If the pattern has double contour the seam allowances are included. They are 1 cm unless specified otherwise.
- If the pattern has single contour, the seam allowances are NOT included and need to be added when laying out the pattern.

### Note on length of fabric:

*Attention! The amount of fabric needed for your pattern is not included. It will depend on the selected pattern size, the width, and design of the fabric you plan to use. First, print all the paper patterns and lay them out at the width of fabric you plan to use (usually from 90 to 150 cm). Measure how much fabric you will need. Don't forget to account for pieces that need to be cut multiple times and pieces that are cut on the fold.*



## CUTTING:

### Note on cutting:

*On the pattern pieces, "beam" means straight of grain. Lay out your pieces accordingly. Some pieces will be cut on the fold. This is noted on the pattern piece. Mark all notches and other design features such as pleats etc. from the pattern onto your fabric.*

*When sewing the garment, pay attention to notches, they must match up.*

Main fabric:

1. Upper back - cut 2
2. Lower back - cut 2
3. Upper front - cut 1 on fold
4. Side - cut 2
5. Lower front - cut 1 on fold
6. Collar - cut 1

7. Front neck facing - cut 1 on fold
8. Sleeve - cut 2

Fusible interfacing:

1. Front neck facing - cut 1
2. Collar - cut 1

## **INSTRUCTIONS:**

1. Apply fusible interfacing.
2. Sew darts on upper back, press bulk towards center. Sew a gathering stitch along the upper edge of the back and gather fullness. Sew upper back to lower back, press towards top and serge.
3. Serge center back edges separately on each piece. Sew the center back seam from the mark to the bottom edge, press the seam apart. Sew in zipper.
4. Sew princess seams on upper front, press towards center, serge. Sew a gathering stitch along the lower edge of upper front and gather fullness. Sew upper front to lower front, press towards top and serge.
5. Cut (or take ready) bias tape, its width should equal 2.5 cm and its length should equal 10 cm for loop buttonhole. Fold tape in half lengthwise right sides together and stitch at 0.3 cm from fold. Cut away seam allowances close to seam, turn tape right side out and straighten the rolled piece. Cut into two equal parts. Adjust the length of buttonholes.
6. Fold collar in half lengthwise right sides together and sew short sides, inserting the loop button holes. Start and stop stitching exactly at the marked line of seam of collar. Sew the area of the neckline between the marks. Clip seam allowances near notches. Turn right side out and press.
7. Serge outer edge of front facing. Sew a gathering stitch along the front neckline and gather fullness. Pin facing to garment right sides together and sew the front neckline opening. Trim seam allowances to 0.5, in the corner to 0.1 cm. Fold the facing onto wrong side, straighten and press. Baste the pieces together along the shoulder seams.
8. Sew side and shoulder seams, press towards the back and serge.
9. Sew the outer collar into neckline, press towards collar. Fold the seam allowance of the inner side onto the wrong side and press and stitch in the ditch of collar.
10. Sew sleeve seam, press towards back and serge. Sew sleeves into armholes, serge and press.
11. Fold inside seam allowance along lower edge of sleeve at 2 cm, then at 2 cm and topstitch, making a casing. Measure a required length of the elastic tape, thread it into casing and fix the ends.

12. Serge bottom edge of dress, press onto wrong side and topstitch.

13. Sew on buttons at collar.

**TECHNICAL DRAWING:**

