

## Summer Vest - Sewing Pattern #2596

Recommendations on fabric: thick natural/mixed fabric suitable for dresses.

You will also need: fusible interfacing; 2 buttons.

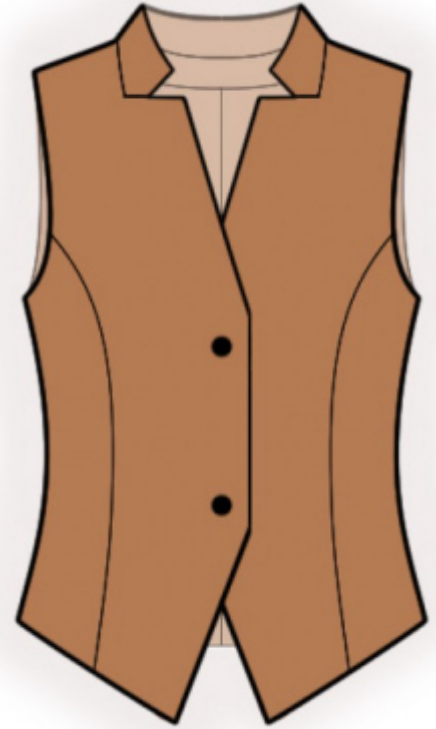
Seam allowances: Seam allowance for hem of garment - 2 cm; other seams - 1 cm.

### Note on seam allowances:

- If the pattern has double contour the seam allowances are included. They are 1 cm unless specified otherwise.
- If the pattern has single contour, the seam allowances are NOT included and need to be added when laying out the pattern.

### Note on length of fabric:

*Attention! The amount of fabric needed for your pattern is not included. It will depend on the selected pattern size, the width, and design of the fabric you plan to use. First, print all the paper patterns and lay them out at the width of fabric you plan to use (usually from 90 to 150 cm). Measure how much fabric you will need. Don't forget to account for pieces that need to be cut multiple times and pieces that are cut on the fold.*



## CUTTING:

### Note on cutting:

*On the pattern pieces, "beam" means straight of grain. Lay out your pieces accordingly. Some pieces will be cut on the fold. This is noted on the pattern piece. Mark all notches and other design features such as pleats etc. from the pattern onto your fabric.*

*When sewing the garment, pay attention to notches, they must match up.*

Main fabric:

1. Center back - cut 2
2. Side back - cut 2
3. Center front - cut 2
4. Side front - cut 2
5. Stand collar - cut 2
6. Center front facing - cut 2
7. Back neck facing - cut 1

Lining:

1. Center back - cut 2
2. Side back - cut 2
3. Front lining - cut 2

Attention! The central backs from lining are cut using the pattern pieces for the main fabric except for the width of the back neckline facing.

Fusible interfacing:

1. Center front - cut 2
2. Stand collar - cut 1
3. Center front facing - cut 2
4. Back neck facing - cut 1

**INSTRUCTIONS:**

1. Apply fusible interfacing.
2. Sew side backs to center back, press towards center. Sew the center back seam, press the seam apart.
3. Sew side fronts to front, press towards center.
4. Sew side and shoulder seams, press the seam apart.
5. Pin stand collars together, right sides together and sew collar ends and the outer edge of collar. Trim away corners, snip into seam allowance near the mark. Turn stand collar right side out, straighten and press. Sew the stand collar into neckline, snipping into seam allowances of the front in the corners.
6. Sew side seams of center front facings and back neckline facings, press the seam apart.
7. Pin together center front facings and front right sides together and sew the center front edge, the neckline and the lower corner, stopping at 1.5 cm from the edge of the center front facing. Trim away corners, clip into curves. Fold the center front facings onto right side, straighten seams, press.
8. Sew darts and seams on lining, leaving an opening in left side seam. Sew lining to inner edges of the center front facings and to the facing. Sew lining to armhole in two steps: first sew the front armhole, then sew the back armhole.
9. Press lower edge of garment onto wrong side. Sew lining to lower edge of garment. Turn the vest right side out through the opening. Sew the opening closed. Sew a decorative/fixing stitch line along the lower edge.
10. Make buttonholes on right front, sew on buttons onto left front.

**TECHNICAL DRAWING:**

