

Vest With Gathers Under Bust - Sewing Pattern #2592

Recommendations on fabric: natural/mixed dress fabrics or thin suiting fabrics.

You will also need: fusible interfacing, 3 buttons.

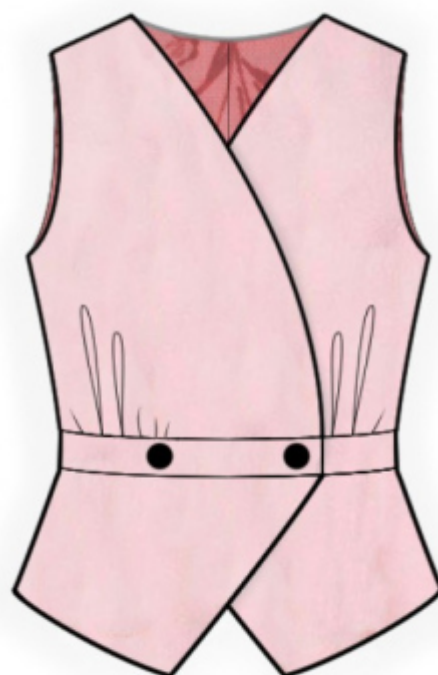
Seam allowances: seam allowance for hem of garment — 2.0 cm, other seams 1 cm.

Note on seam allowances:

- If the pattern has double contour the seam allowances are included. They are 1 cm unless specified otherwise.
- If the pattern has single contour, the seam allowances are NOT included and need to be added when laying out the pattern.

Note on length of fabric:

Attention! The amount of fabric needed for your pattern is not included. It will depend on the selected pattern size, the width, and design of the fabric you plan to use. First, print all the paper patterns and lay them out at the width of fabric you plan to use (usually from 90 to 150 cm). Measure how much fabric you will need. Don't forget to account for pieces that need to be cut multiple times and pieces that are cut on the fold.



CUTTING:

Note on cutting:

On the pattern pieces, "beam" means straight of grain. Lay out your pieces accordingly. Some pieces will be cut on the fold. This is noted on the pattern piece. Mark all notches and other design features such as pleats etc. from the pattern onto your fabric.

When sewing the garment, pay attention to notches, they must match up.

Main fabric:

1. Upper back – cut 2
2. Back belt — cut 1
3. Lower back — cut 1
4. Upper front — cut 2
5. Front belt — cut 2
6. Lower front — cut 2
7. Center front facing — cut 2

8. Back neck facing — cut 1

Fusible interfacing:

1. Center front facing — cut 2
2. Back neck facing — cut 1

INSTRUCTIONS:

1. Apply fusible interfacing.
2. Sew darts on upper backs, press bulk towards center. Sew center seam on upper backs, press towards left and serge.
3. Sew back belt to upper back, press seam allowances towards belt, serge. Sew upper back to lower back, press seam allowances towards belt, serge.
4. Sew a gathering stitch along the lower edge of upper front and gather fullness. Sew front belt to upper front, press seam allowances towards belt, serge. Sew upper front to lower front, press seam allowances towards belt, serge.
5. Sew shoulder seams, press seam allowances towards back and serge.
6. Sew shoulder edges of center front facings and back neckline facing, press the seam apart. Serge the outer edge. Pin center front facings onto garment right sides together and sew center front facings, neckline and lower edge. Clip into curves, trim away corners. Turn garment right side out. Sew the back neckline facing to the shoulder seam and to the center seam by hand.
7. Cut (or take ready) bias tape, its width should equal 4 cm and length should equal the length of armhole + 4 cm. Fold bias tape in half lengthwise right side out and press. Pin bias tape onto armhole edge from the right side, leaving loose ends, and sew. Fold bias tape onto wrong side, clip into seam allowances and topstitch onto main piece along the seam. Press seam.
8. Sew side seams, press seam allowances towards back and serge.
9. Serge the lower edge of garment, press onto wrong side and finish with hidden stitches.
10. Make buttonhole on right front, on left front sew on button. Make an inner buttonhole on left front, sew on hidden button. Sew on decorative button onto right front.

TECHNICAL DRAWING:

