

Sleeveless Wrap Dress - Sewing Pattern #2590

Recommendations on fabric: soft natural/mixed fabric suitable for dresses.

You will also need: fusible interfacing, dress zipper, decorative button.

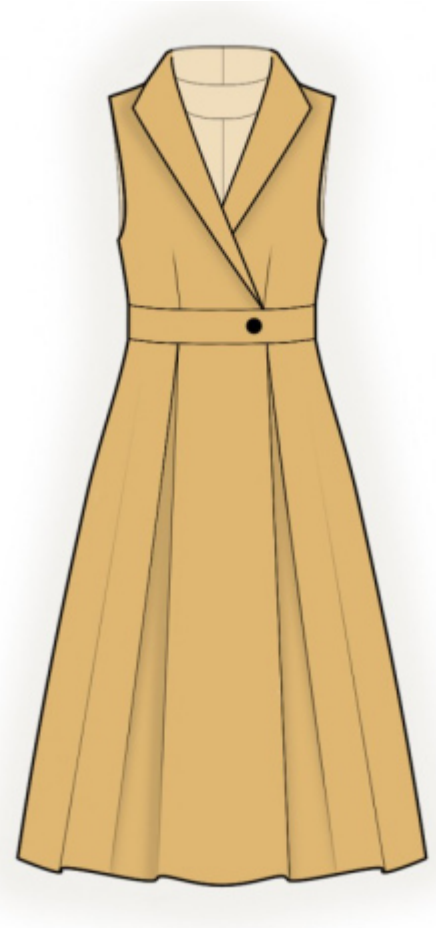
Seam allowances: seam allowance for hem of garment — 2.0 cm, other seams 1 cm.

Note on seam allowances:

- If the pattern has double contour the seam allowances are included. They are 1 cm unless specified otherwise.
- If the pattern has single contour, the seam allowances are NOT included and need to be added when laying out the pattern.

Note on length of fabric:

Attention! The amount of fabric needed for your pattern is not included. It will depend on the selected pattern size, the width, and design of the fabric you plan to use. First, print all the paper patterns and lay them out at the width of fabric you plan to use (usually from 90 to 150 cm). Measure how much fabric you will need. Don't forget to account for pieces that need to be cut multiple times and pieces that are cut on the fold.



CUTTING:

Note on cutting:

On the pattern pieces, "beam" means straight of grain. Lay out your pieces accordingly. Some pieces will be cut on the fold. This is noted on the pattern piece. Mark all notches and other design features such as pleats etc. from the pattern onto your fabric.

When sewing the garment, pay attention to notches, they must match up.

Main fabric:

1. Upper back - cut 2
2. Back belt — cut 2
3. Lower back — cut 2
4. Upper front — cut 2
5. Front belt — cut 1
6. Lower front — cut 1 on fold

7. Center front facing — cut 2
8. Back neck facing - cut 1

Fusible interfacing:

1. Center front facing — cut 2
2. Back neck facing - cut 1

INSTRUCTIONS:

1. Apply fusible interfacing.
2. Sew darts on upper backs, press the inner part towards center. Sew back belt to upper part, press seam allowances towards belt and serge.
3. Make and baste box pleats on lower back. Sew upper back to lower back, press towards top and serge.
4. Serge center back edges separately on each piece. Sew center edge from neckline up to the first mark and from second mark to bottom, press the seam apart. Sew in zipper.
5. Sew darts on upper fronts, press the inner part towards center, cut away the bulk of the dart leaving 1 cm and serge.
6. Sew shoulder seams, clipping into the seam allowance of the shoulder seam on Front, press towards the back and serge. Sew collar seam, press the seam apart. Sew in the collar into the back neckline, press seam allowances towards the collar.
7. Sew the shoulder seams on Back Neckline Facing and Center Front Facings, clip into corners and press apart. Sew collar seam, press the seam apart. Sew the collar into the facing's neckline, press seam allowances towards the collar. Serge the outer edge of center front facings and of neckline facing.
8. Pin facings and center front facings to front right sides together and sew center front edges and the collar edge. Clip into curves, trim away corners, turn collar right side out, straighten seams, press. Slip stitch together seam allowances along collar seams. Put right front onto left front and baste together along lower edge.
9. Sew front belt to upper piece, press seam allowances towards belt and serge.
10. Make and baste box pleats on lower front. Sew upper front to lower front, press towards top and serge.
11. Cut (or take ready) bias tape, its width should equal 4 cm and length should equal the length of armhole + 4 cm. Fold bias tape in half lengthwise right side out and press. Pin bias tape onto armhole edge from the right side, leaving loose ends, and sew. Fold bias tape onto wrong side, clip into seam allowances and topstitch onto main piece along the seam. Press seam.

12. Sew side seams, press towards the back and serge.
13. Serge the lower edge of garment, press onto wrong side and topstitch.
14. Sew a decorative button onto the front belt.

TECHNICAL DRAWING:

