

Blouse Without Sleeves - Sewing Pattern #2575

Recommendations on fabric: well draping natural/mixed fabrics suitable for blouses.

You will also need: dress zipper.

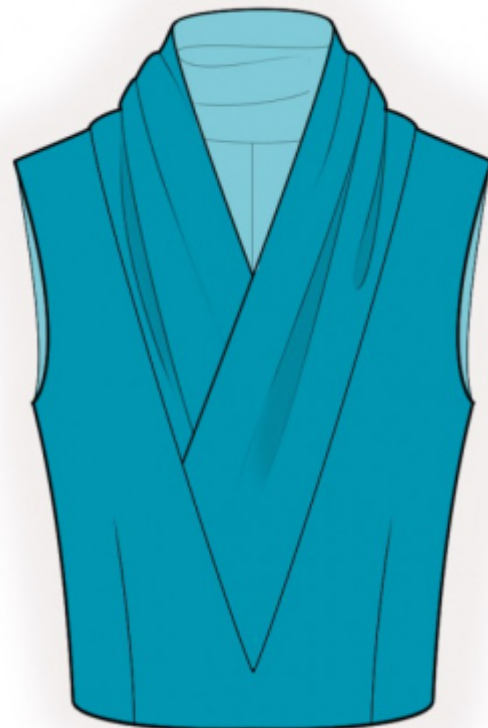
Seam allowances: all seams 1 cm. Seam allowance for hem - 3 cm.

Note on seam allowances:

- If the pattern has double contour the seam allowances are included. They are 1 cm unless specified otherwise.
- If the pattern has single contour, the seam allowances are NOT included and need to be added when laying out the pattern.

Note on length of fabric:

Attention! The amount of fabric needed for your pattern is not included. It will depend on the selected pattern size, the width, and design of the fabric you plan to use. First, print all the paper patterns and lay them out at the width of fabric you plan to use (usually from 90 to 150 cm). Measure how much fabric you will need. Don't forget to account for pieces that need to be cut multiple times and pieces that are cut on the fold.



CUTTING:

Note on cutting:

On the pattern pieces, "beam" means straight of grain. Lay out your pieces accordingly. Some pieces will be cut on the fold. This is noted on the pattern piece. Mark all notches and other design features such as pleats etc. from the pattern onto your fabric.

When sewing the garment, pay attention to notches, they must match up.

Main fabric:

1. Back - cut 2
2. Front - cut 1 on fold
3. Collar - cut 2

INSTRUCTIONS:

1. Sew darts on back. Trim bulk with serger and press towards the center. Serge the center back edges separately. Sew center back seam from top to notch of the zipper. Press the seam allowances apart. Sew in zipper. (The slider of the zipper is at the bottom when closed).
2. Sew darts on front. Trim bulk with serger and press towards the center.
3. Sew shoulder seams. Serge seams and press towards back.
4. Pin collars together right sides together and sew the outer edge. Turn the collars onto right side and press. Pin left collar onto right collar and baste together along the lower edges. Sew collar into neckline, clipping into seam allowances in the corner. Serge the seam allowances and press towards collar.
5. Cut or use ready-made bias tape, its width should equal 4 cm and length should equal the length of armhole + 4 cm. Fold bias tape in half lengthwise right side out and press. Pin bias tape onto armhole edge from the right side and sew. Fold bias tape onto wrong side and topstitch onto main piece along the seam. Press seam.
6. Sew side seams. Serge seams and press towards back.
7. Serge the seam allowance along the hem, press onto wrong side and topstitch.

TECHNICAL DRAWING:

