

Recommendations on fabric: light to medium stretch knit fabric, chiffon for collar

Seam allowances: hem, hem of sleeve - 1.5 cm, neckline - 1 cm, collar tail (between "o" marks) - 1.5 cm, other collar edges - 1 cm, all other seams - 0.7 cm.

Note on seam allowances:

- If the pattern has double contour the seam allowances are included. They are 1 cm unless specified otherwise.
- If the pattern has single contour, the seam allowances are NOT included and need to be added when laying out the pattern.

Note on length of fabric:

Attention! The amount of fabric needed for your pattern is not included. It will depend on the selected pattern size, the width, and design of the fabric you plan to use. First, print all the paper patterns and lay them out at the width of fabric you plan to use (usually from 90 to 150 cm). Measure how much fabric you will need. Don't forget to account for pieces that need to be cut multiple times and pieces that are cut on the fold.



Advice: Knit fabric pieces are sewn together with special elastic or narrow zig-zag stitch. Seam allowance on hem is stitched with twin needles to save stretchiness. Pieces can also be sewn together with 3 or 4 – thread serger. When serging, cut seam allowances to 0.6 – 0.8 cm.

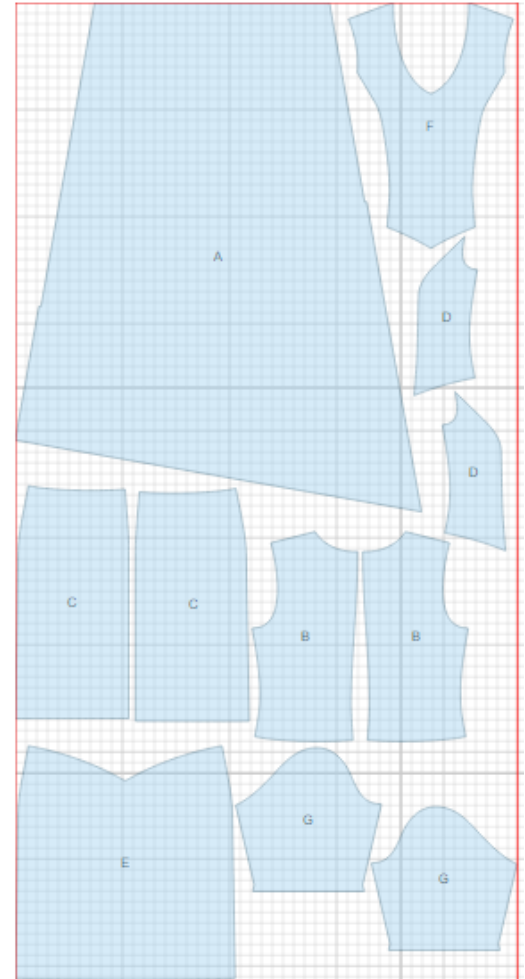
CUTTING:

Main fabric:

1. Upper back – cut 2 (B)
2. Lower back – cut 2 (C)
3. Side front - cut 2 (D)
4. Center front - cut 1 (F)
5. Lower front - cut 1 (E)
6. Sleeve - cut 2 (G)

Chiffon:

1. Collar - cut 1 (A)



INSTRUCTIONS:

1. Sew lower backs to upper backs. Serge and press seam upwards. Sew center back seam. Serge and press seam.
2. Sew side front to center front. Serge and press seams towards center. Sew lower front to upper front, clipping into seam in corners on lower part. Serge and press seam upwards.
3. Sew shoulder seams, serge and press open.

-
4. Clip into collar seam allowance near "o" marks. Narrow hem tail of collar. Fold collar in half lengthwise wrong sides together. Make gathering stitch along short unhemmed side and gather fullness reducing collar width by half. Sew collar into neckline starting stitch at lower point of front neckline and continuing to left shoulder seam. At this section sew collar in only from one side. Do not touch second hemmed side. Fasten both collar sides at left shoulder seam and then sew both collar sides into back neckline and right part of front neckline. Serge seam and press towards armhole. Turn dress wrong side out. Fasten together seam allowances of gathered side of collar and seam allowances of left part of front neckline. Sew seam allowances together.
 5. Sew side seams. Serge and press seams towards back.
 6. Sew sleeve seams. Serge and press.
 7. Sew sleeves into armholes. Serge and press seams.
 8. Serge hem of garment and hem of sleeve. Turn under, press and topstitch.
 9. Drape collar and attach it with a brooch.

TECHNICAL DRAWING:

