

Blouse With Wrap - Sewing Pattern #2536

Recommendations on fabric: soft natural/mixed fabrics suitable for blouses.

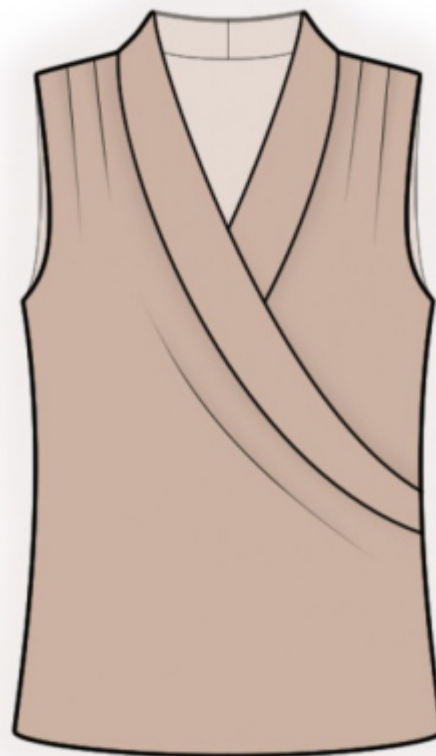
Seam allowances: all seams 1 cm. Seam allowance for hem of garment - 2 cm.

Note on seam allowances:

- If the pattern has double contour the seam allowances are included. They are 1 cm unless specified otherwise.
- If the pattern has single contour, the seam allowances are NOT included and need to be added when laying out the pattern.

Note on length of fabric:

Attention! The amount of fabric needed for your pattern is not included. It will depend on the selected pattern size, the width, and design of the fabric you plan to use. First, print all the paper patterns and lay them out at the width of fabric you plan to use (usually from 90 to 150 cm). Measure how much fabric you will need. Don't forget to account for pieces that need to be cut multiple times and pieces that are cut on the fold.



CUTTING:

Note on cutting:

On the pattern pieces, "beam" means straight of grain. Lay out your pieces accordingly. Some pieces will be cut on the fold. This is noted on the pattern piece. Mark all notches and other design features such as pleats etc. from the pattern onto your fabric.

When sewing the garment, pay attention to notches, they must match up.

Main fabric:

1. Back - cut 1 on fold
2. Front - cut 2
3. Collar - cut 2

INSTRUCTIONS:

1. Make pleats on shoulder edges of the front and stitch down the pleats by 2-3 cm (the bulk is directed towards neckline).
2. Pin collars together, right sides together, and sew the collar seam, press seam apart. Press collar in half lengthwise right side out.
3. Sew shoulder seams, press seams towards back and serge.
4. Sew collar into the back neckline and into the front neckline, press towards self garment, serge and topstitch. Fold the collar in half outside and sew it by hand to the side edge. Put right front onto left front and baste together along the lower and side edge.
5. Cut or use ready-made bias tape, its width should equal 4 cm and length should equal the length of armhole + 4 cm. Fold bias tape in half lengthwise right side out and press. Pin bias tape to armhole edge from the right side and sew. Clip into seam allowances. Fold bias tape onto wrong side and topstitch onto main piece along the seam. Press seam.
6. Sew side seams, press seams towards back and serge.
7. Press lower edge of garment onto wrong side two times at 1 cm and topstitch.

TECHNICAL DRAWING:

