

Vest With Belt - Sewing Pattern #2533

Recommendations on fabric: thin natural/mixed suiting fabrics.

You will also need: fusible interfacing; lining; dress zipper; decorative buckle.

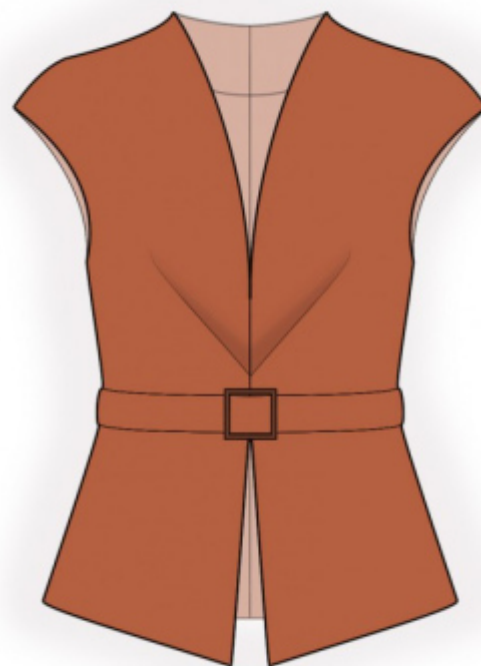
Seam allowances: all seams 1 cm. Seam allowance for hem of garment - 2 cm.

Note on seam allowances:

- If the pattern has double contour the seam allowances are included. They are 1 cm unless specified otherwise.
- If the pattern has single contour, the seam allowances are NOT included and need to be added when laying out the pattern.

Note on length of fabric:

Attention! The amount of fabric needed for your pattern is not included. It will depend on the selected pattern size, the width, and design of the fabric you plan to use. First, print all the paper patterns and lay them out at the width of fabric you plan to use (usually from 90 to 150 cm). Measure how much fabric you will need. Don't forget to account for pieces that need to be cut multiple times and pieces that are cut on the fold.



CUTTING:

Note on cutting:

On the pattern pieces, "beam" means straight of grain. Lay out your pieces accordingly. Some pieces will be cut on the fold. This is noted on the pattern piece. Mark all notches and other design features such as pleats etc. from the pattern onto your fabric.

When sewing the garment, pay attention to notches, they must match up.

Main fabric:

1. Upper back – cut 2
2. Lower back – cut 2
3. Lower front – cut 2
4. Upper front – cut 2
5. Center front facing — cut 2
6. Back neck facing – cut 1
7. Belt – cut 1

Fusible interfacing:

1. Center front facing — cut 2
2. Back neck facing – cut 1

Attention: the pattern pieces from main fabric are cut using the patterns for the main fabric, except for the width of the Center Front facing and the back neckline facing.

Lining:

1. Upper back – cut 2
2. Lower back – cut 2
3. Lower front – cut 2
4. Upper front – cut 2

INSTRUCTIONS:

1. Apply fusible interfacing to the corresponding pieces and to the seam allowances of the hem of the garment.
2. Sew shoulder and waist darts on upper backs, press bulk towards center. Sew upper back to lower back, press seam allowances towards top. Sew center back seam from top to notch zippers and from notch for zipper to bottom. Press seam apart. Sew in zipper.
3. Make a pleat on upper front. Fix the base of the pleat with machine stitch by 2-3 cm. Fold the inner part towards down and baste it to the lower and to the central edge. Sew upper front to lower front from the side seam exactly up to the marked line of seam center front facings, clip seam allowances and press apart.
4. Sew shoulder and side seams, press seam apart.
5. Sew side seams of back neckline facing and buttonstands, press seam apart. Pin the central front facings and the facing onto the garment, right sides together, and sew the neckline and the central front edge, exactly up to the upper marking. Clip into seam allowance near the notch. Clip into seam allowances along the curves. Fold center front facings (buttonstands) onto right side, straighten seams, press. Sew the central front seam from the mark down to the seam of the lower part, press seam apart. Sew together the central front facings from the mark to the mark of the seam of the lower part. Press seam apart. Sew the lower front edges and the central edge. Trim seam allowances, straighten seams and press.
6. Sew seams on lining. Sew the central back seam from the mark for zipper down to the lower edge. Sew lining to buttonstands and facing. Sew armhole in two steps: first sew front armhole, then sew back armhole. Sew lining to lower edge of garment. Slipstitch lining to zipper tape.
7. Fold belt in half lengthwise right sides together and sew along long side and one short side. Trim seam allowances, turn right side out and press. Thread the buckle into the unsewn end of the belt and sew by hand.

TECHNICAL DRAWING:

