

Double Breasted Dress - Sewing Pattern #2504

Recommendations on fabric: natural/mixed fabric suitable for dresses.

You will also need: fusible interfacing; dress zipper; 4 buttons.

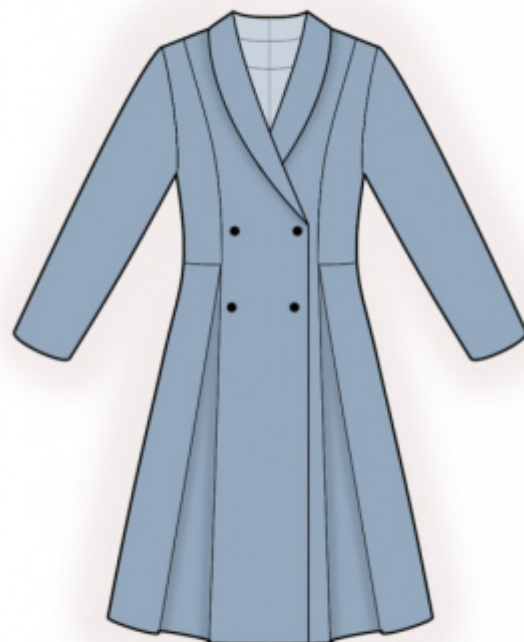
Seam allowances: all seams 1 cm; seam allowance for hem of garment and hem of sleeve - 2.0 cm.

Note on seam allowances:

- If the pattern has double contour the seam allowances are included. They are 1 cm unless specified otherwise.
- If the pattern has single contour, the seam allowances are NOT included and need to be added when laying out the pattern.

Note on length of fabric:

Attention! The amount of fabric needed for your pattern is not included. It will depend on the selected pattern size, the width, and design of the fabric you plan to use. First, print all the paper patterns and lay them out at the width of fabric you plan to use (usually from 90 to 150 cm). Measure how much fabric you will need. Don't forget to account for pieces that need to be cut multiple times and pieces that are cut on the fold.



CUTTING:

Note on cutting:

On the pattern pieces, "beam" means straight of grain. Lay out your pieces accordingly. Some pieces will be cut on the fold. This is noted on the pattern piece. Mark all notches and other design features such as pleats etc. from the pattern onto your fabric.

When sewing the garment, pay attention to notches, they must match up.

Main fabric:

1. Back - cut 2
2. Side back - cut 2
3. Front — cut 2
4. Side front — cut 2
5. Sleeve - cut 2
6. Center front facing - cut 2
7. Back neck facing - cut 2

Fusible interfacing:

1. Back neck facing – cut 2
2. Center front facing – cut 2

INSTRUCTIONS:

1. Apply fusible interfacing.
2. Clip into seam allowance in the corner of the princess seam on the Back, serge the horizontal edge. Serge the lower edge of Side Back. Make and baste box pleats on the Backs according to markings. Sew side backs to center back, press towards center and serge.
3. Serge separately center back edges. Serge the center back seam from neckline edge to the first marking and from the second marking down to hem, press seam apart, pressing the slit for zipper at the same time. Sew in zipper.
4. Clip into seam allowance in the corner of the princess seam on the Front, serge the horizontal edge. Serge the lower edge of the Side Front. Make and baste box pleats on the Fronts according to markings. Sew side fronts to front, press towards center and serge.
5. Sew shoulder seams, clipping into the seam allowance of the shoulder seam on Front, press seams towards back and serge. Sew collar seam, press seam apart. Sew collar into back neckline, press seam allowances towards collar.
6. Sew the shoulder seams on Back Neckline Facing and Center Front Facings, clip into corners and press apart. Sew collar seam, press seam apart. Sew collar into neckline facings, press seam apart. Serge the outer edge of center front facings and of neckline facing.
7. Pin facings and center front facings to front right sides together and sew center front edges and the collar edge. Clip into curves, turn collar right side out, straighten seams, press. Slip stitch together seam allowances along collar seams. Put right front onto left front, matching center lines and topstitch along the center front edge from notch to bottom.
8. Sew side seams, press seams towards back and serge.
9. Sew sleeve seam, press towards back and serge. Sew sleeves into armholes, serge and press.
10. Serge hem of garment and lower edge of sleeve, press onto wrong side and topstitch.
11. Sew according to markings buttons, connecting the right and the left Fronts.

TECHNICAL DRAWING:

